

## Who we are

We are a global genomics and human health leader innovating the future of precision health. We develop DNA sequencing and array-based life sciences technologies to enable boundless research discovery and personalized health. Our products help pioneer advances in oncology, genetic and infectious diseases, reproductive health, and beyond. Our technology empowers continued innovation toward positive and impactful people- and planet-healing solutions.



## Fast facts



Founded in  
**1998**



Number of employees  
**~8600**



Annual revenue (2025)<sup>1</sup>  
**\$4.3B USD**



Active  
installed base  
**~21,000**

Headquarters

**San Diego, California, USA**

Countries served

**> 165**

Chief Executive Officer

**Jacob Thaysen**

## Sequencing systems

Next-generation sequencing (NGS) is revolutionizing research, enabling experiments that weren't possible before. Illumina offers a range of innovative NGS platforms that deliver exceptional data quality and accuracy, at a massive scale.



**NovaSeq™ X/X Plus**   **NovaSeq 6000/6000Dx\***   **NextSeq™ 1000/2000**

### Production-scale systems



**MiSeq™ i100/i100 Plus**   **MiSeq**   **MiSeqDx\***  
**NextSeq 550/550Dx\***   **MiniSeq™ iSeq™ 100**

### Benchtop systems

## Illumina Connected Software

Integrating seamlessly with our sequencing systems, Illumina Connected Software supports genomic and clinical researchers from primary through tertiary analysis and optimizes lab and sample management. It offers the most accurate and comprehensive variant calling with DRAGEN™ 4.2 secondary analysis,<sup>†</sup> powering greater applications and discovery. Balancing approachability with customization, Illumina Connected Software enables insights for single-sample or population-wide studies.

For Research Use Only. Not for use in diagnostic procedures.

\*For *In Vitro* Diagnostic Use. Not available in all regions and countries.

<sup>†</sup>As compared against all participating solutions' F1 score using [PrecisionFDA v2 Truth Challenge Benchmark Data](#); Illumina internal data on file for DRAGEN v4.2 software, data not from Illumina provided by Precision FDA v2 Truth Challenge 2020.

## Applications

- Oncology
- Genetic disease
- Infectious disease
- Multiomics
- Drug discovery
- Microbial genomics
- Reproductive health
- Molecular and cell biology
- Agriculture
- Conservation and sustainability

## Customers

- Clinics
- Hospitals
- Research labs
- Health care systems
- Academic institutions
- Government agencies
- Pharmaceutical companies

## Where we operate<sup>2</sup>

### United States

San Diego  
(headquarters)  
Foster City  
Hayward  
Baltimore  
Madison

### Australia

Melbourne

### Austria

Vienna

### Belgium

Brussels  
Mechelen

### Brazil

São Paulo

### China

Beijing  
Shanghai  
Guangzhou  
Hangzhou  
Nanjing  
Taipei City

### France

Évry  
Rennes

### Germany

Berlin

### India

Bengaluru

### Italy

Milan

### Israel

Tel Aviv

### Japan

Tokyo  
Osaka

### Netherlands

Eindhoven

### Singapore

### South Korea

Seoul

### Spain

Madrid

### Turkey

Istanbul

### United Arab Emirates

Dubai

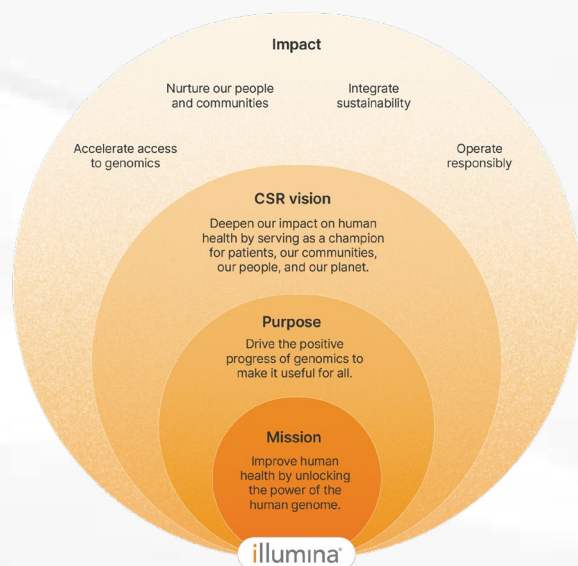
### United Kingdom

Cambridge



## Creating positive impact

By embedding our corporate social responsibility (CSR) strategy into the business, we are driving positive stakeholder **impact** and long-term shareholder **value**.



## Our recognition

- 3BL 100 Best Corporate Citizens
- AmCham Corporate and Societal Action: Recognition for Excellence in Singapore (CARES)
- America's Most JUST Companies by JUST Capital and CNBC
- Disability Equality Index, Best Places to Work for Disability Inclusion
- Dow Jones Sustainability Indices
- Fast Company's Innovation by Design Awards for the NovaSeq X Series (honoree)
- Fast Company's World Changing Ideas Awards for the NovaSeq X Series (honoree)
- Forbes America's Best-in-State Employers
- Forbes World's Best Employers
- Forbes World's Top Companies for Women
- IBO Gold Award for Design for the NovaSeq X Series
- Military Times Best for Vets
- Newsweek America's Greatest Workplaces for Diversity
- Newsweek America's Most Responsible Companies
- TIME World's Best Companies
- U.S. News & World Report Best Companies to Work For

1. Fiscal year 2025 revenue reported in February 2026.

2. Main campus locations currently include San Diego, Foster City, Hayward, UK Illumina Centre, Netherlands, and Singapore Woodlands.