

Install Notes

HCS 2.2.38

RTA 1.18.61

SAV 1.8.37

Recipe Fragments (RF) 1.5.14

BaseSpace Broker 2.1.0.1

For HiSeq® 2500, 2000, or 1500 Instruments

Introduction

This document describes the installation process for HCS 2.2.38, RTA 1.18.61, SAV 1.8.37, Recipe Fragments 1.5.14, .NET 4.5.1 and BaseSpace Broker 2.1.0.1 for the HiSeq 2500, 2000, and 1500 instruments.

Important: During the installation process some files will be automatically renamed. Any manual edits made to the HiSeq configuration files, with the exception of changes made to the HiSeqControlSoftware.Options.cfg, will not be preserved through this software update. Custom settings will need to be manually restored after this update.

Any custom recipe files will be over written by the Recipe Fragments installation: customers should recreate their custom recipes after receiving this update.

The BaseSpace Send Instrument Health data option setting will be reset by this software install to be "on". Customers should update their BaseSpace Send Instrument Health settings after receiving this update.

I. Pre-Installation

Required PC Specs:

1. Computer provided by Illumina with HiSeq system.
2. Ensure that the FPGA version is displayed as below:
 - FPGA version 7.9.7 for HiSeq v4 Mode-enabled instruments
 - FPGA 3.10.3 or above for non-HiSeq v4 Mode-enabled instruments

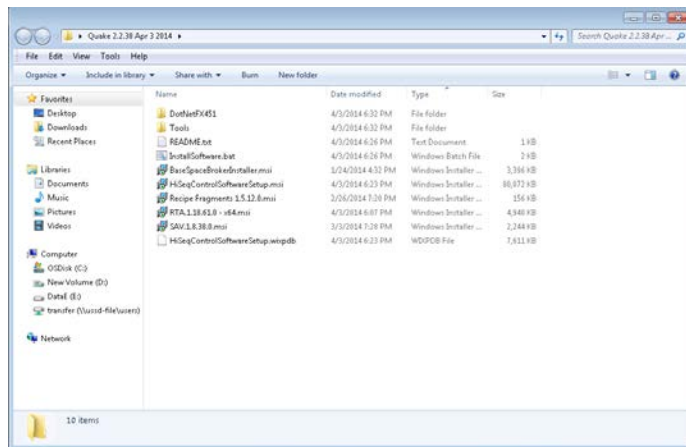
To find these versions, select Menu >> About from HCS software User Interface. If your FPGA does not meet this requirement, please contact Illumina Technical Support for assistance in upgrading before proceeding.

Downloading Installers

1. Obtain the batch installer software package release.
2. Copy the installation package folder to the computer's desktop.

II. Installation

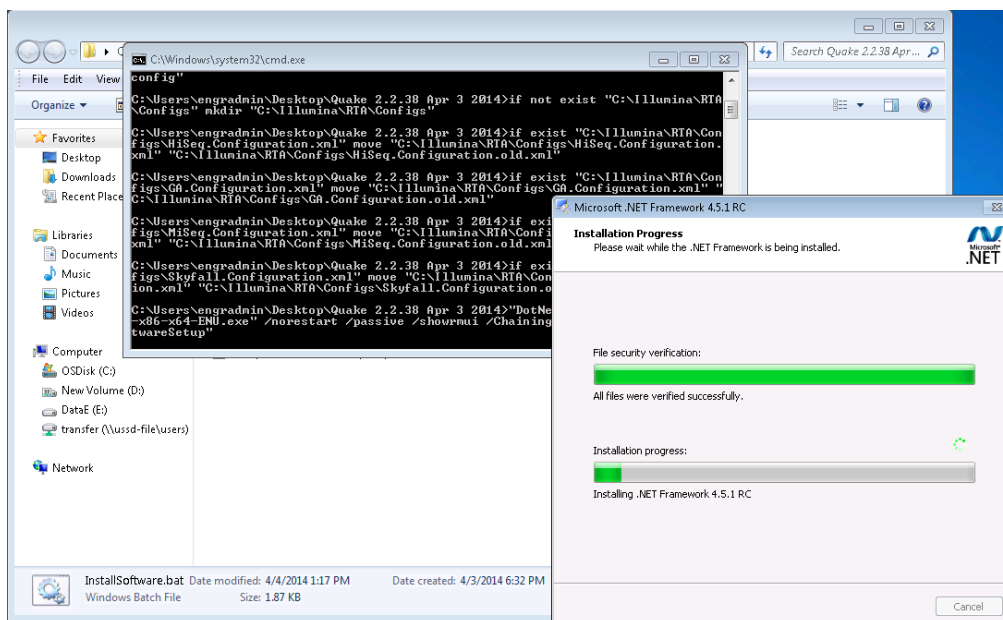
1. Ensure the instrument and PC are powered ON.
2. Stop the BaseSpace Broker service before proceeding with the update: To do this, go to Control Panel, Administrative Tools, Services. From the list of Services, select BaseSpace Broker (may be listed as Illumina BaseSpace Broker), and then select "Stop the service".
3. Double-click on the "InstallSoftware.bat" batch file in the HCS installer folder as shown below. This will initiate installation.



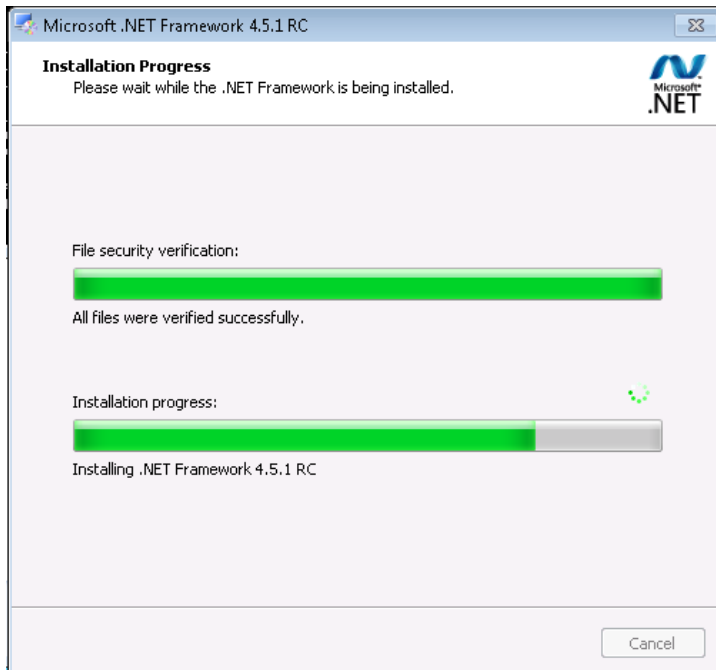
Note: The script will lead you through the .NET 4.5.1, HCS, RTA, SAV, Recipe Fragments, and BaseSpace Broker installers in sequential order as shown below. **It is important to complete the entire installation process to guarantee a successful upgrade.**

Note: In the event that the batch installer detects an instrument type configuration issue and is unable to reset the instrument type, the following error text will be displayed: “Unable to complete installation with current configuration. Please contact Illumina Support”. This error message will also be written to a log file written to the location of the batch installer. This message refers to an issue with the instrument type encoding: it does not pertain to incompatibilities in the FPGA version.

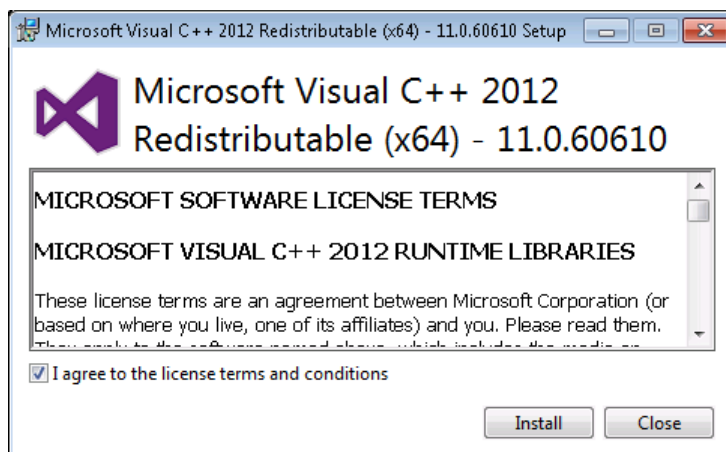
Wait for installer to extract files and install/repair .NET 4.5.1



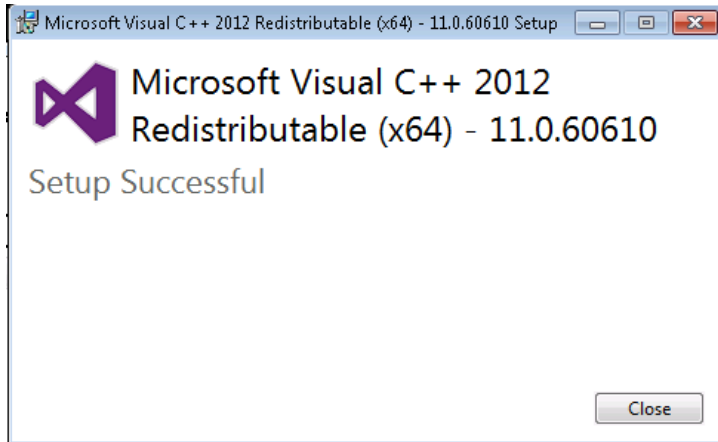
If .NET 4.5.1 is not installed, it will install automatically.



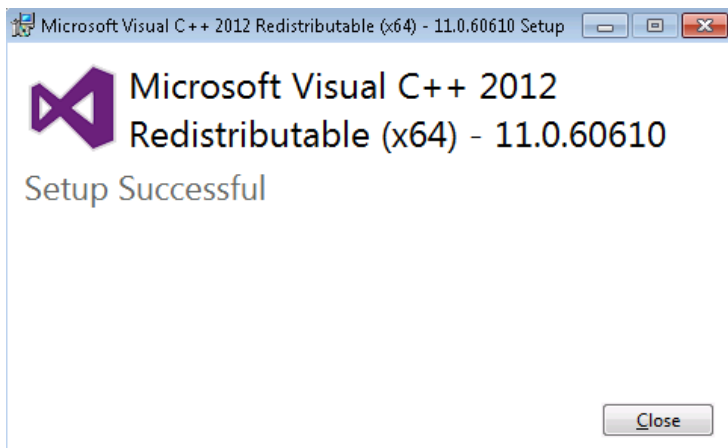
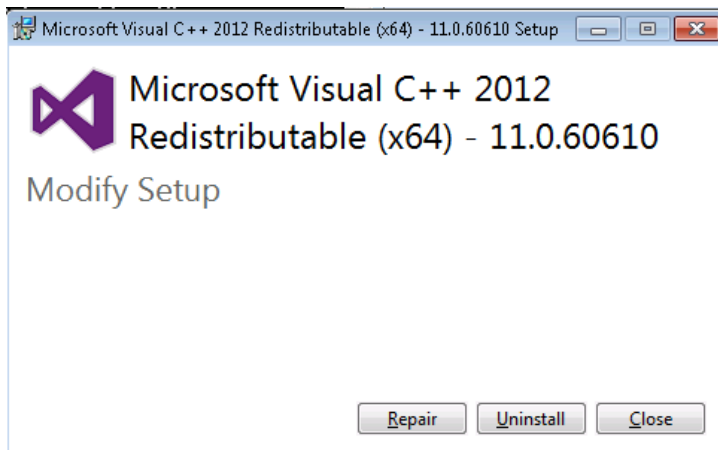
Check the box to indicate agreement to the license terms and conditions, then press "Install."



Press "Close" to continue with installation.

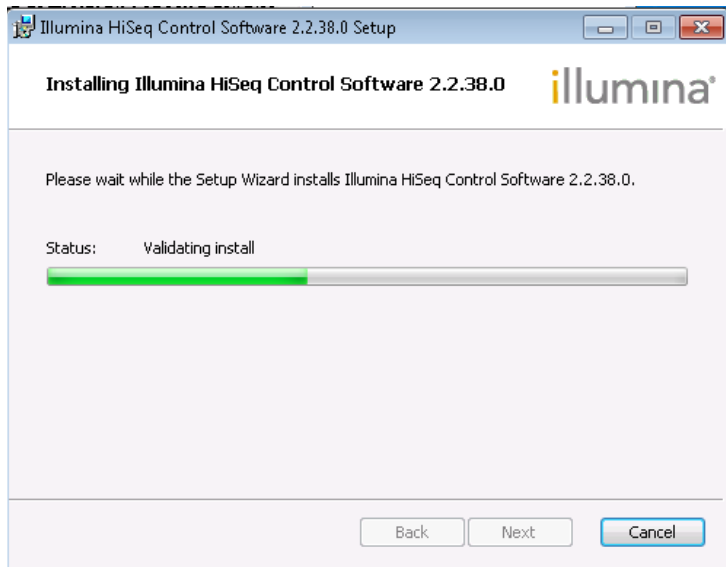
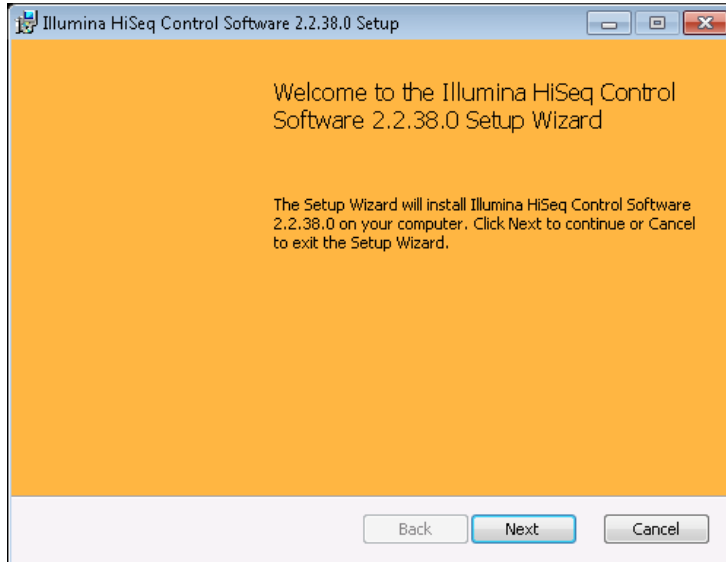


If .NET 4.5.1 is already installed, you will be prompted to Repair. Press Repair, then press Close to continue with install.

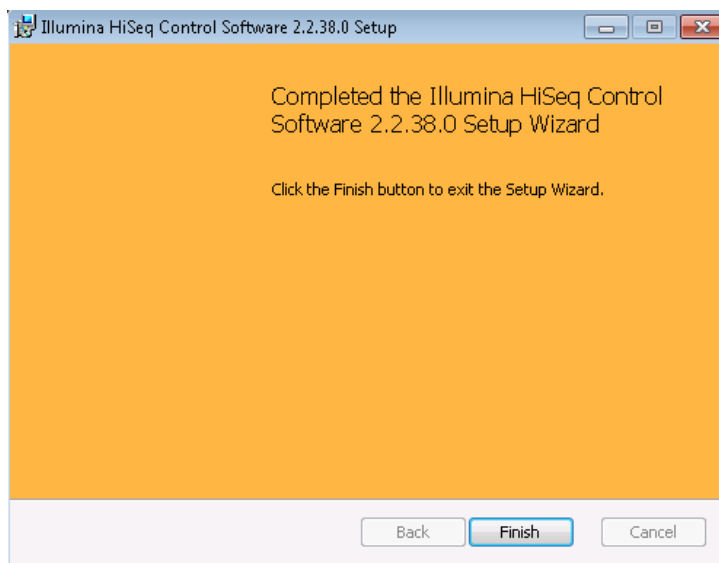
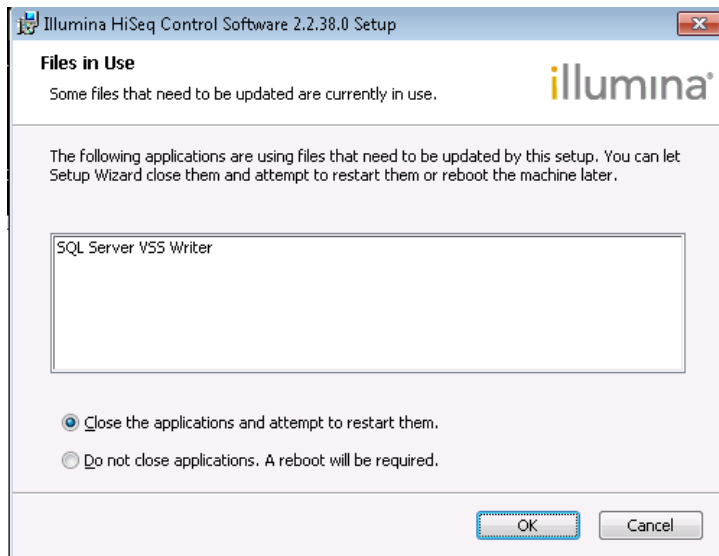


When prompted, sequentially click "Next" and "Finish" to install each component of the software upgrade.

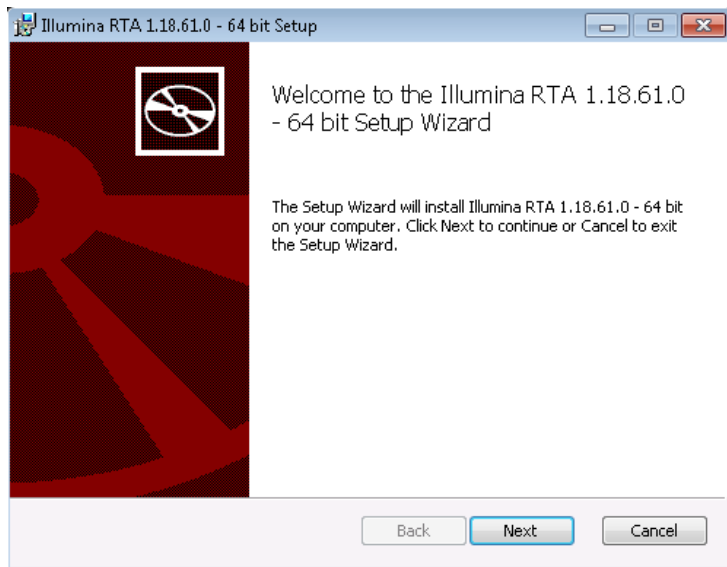
HCS Setup Screen



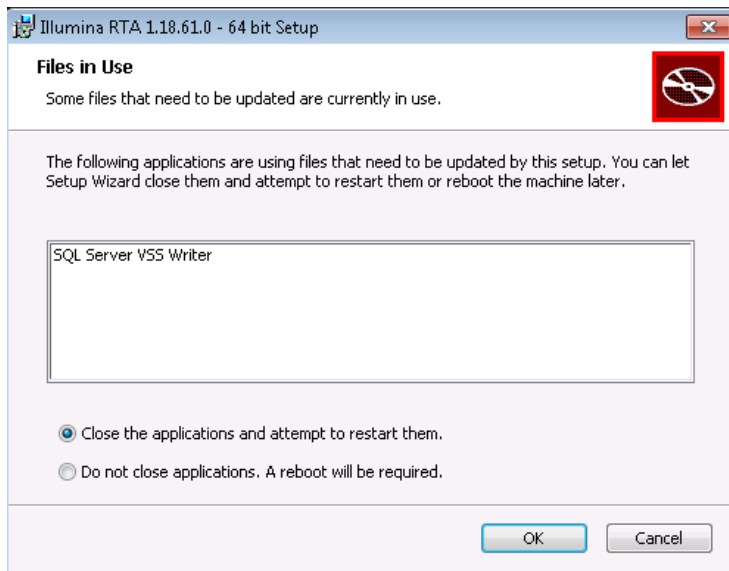
If you see this screen, press “OK” and continue.

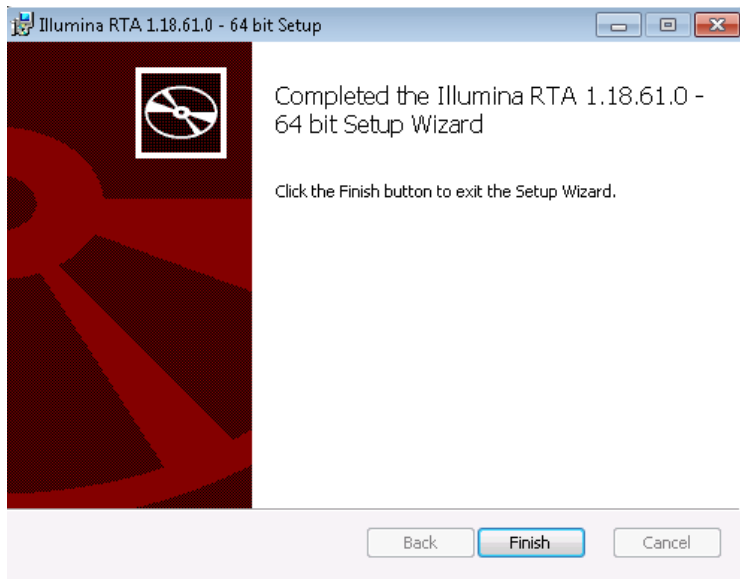


RTA Setup Screen

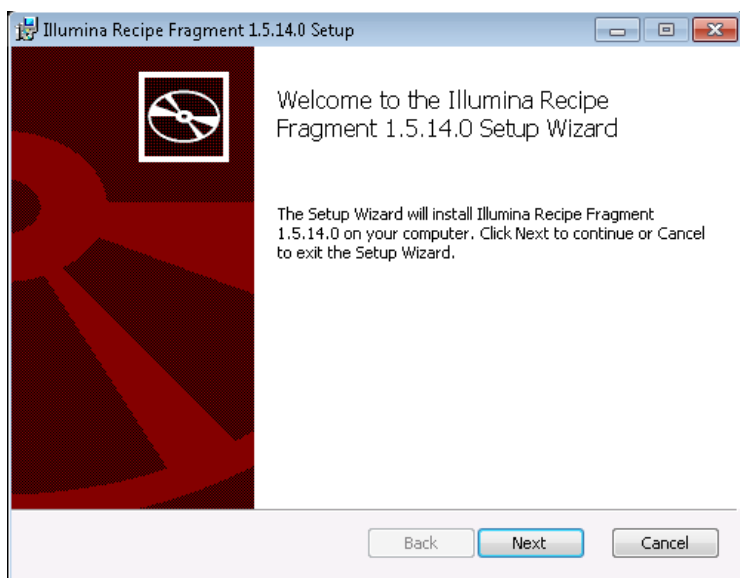


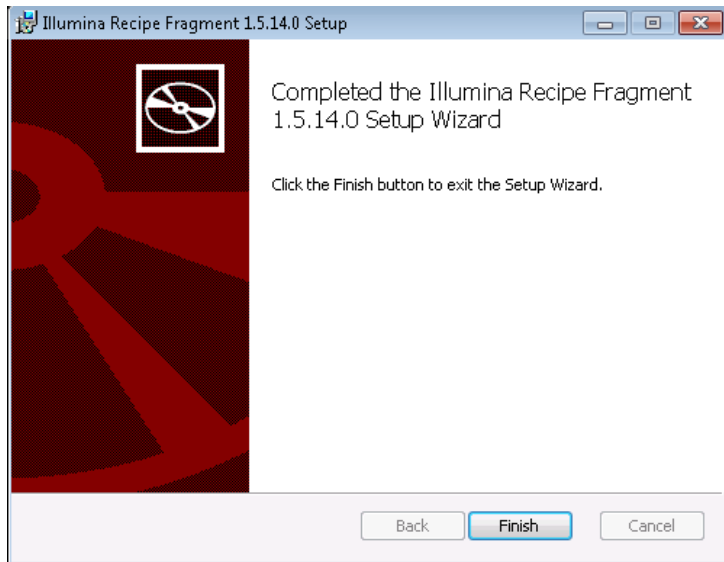
If you see this screen, press "OK" and continue.





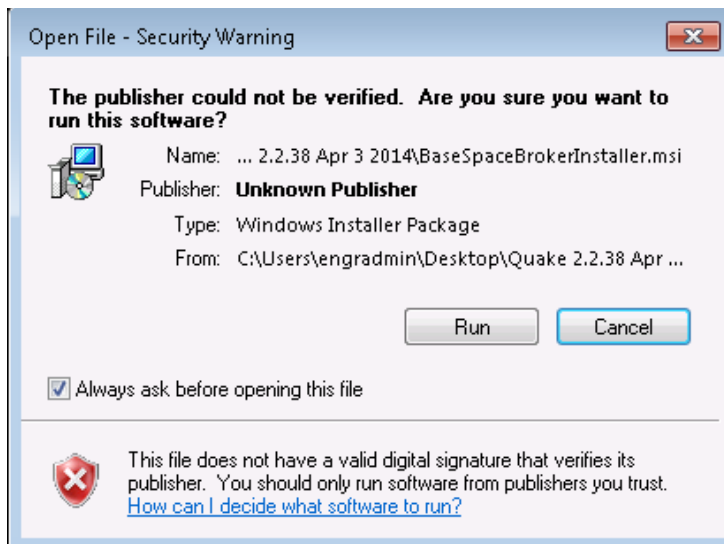
Recipe Fragments Setup Screen



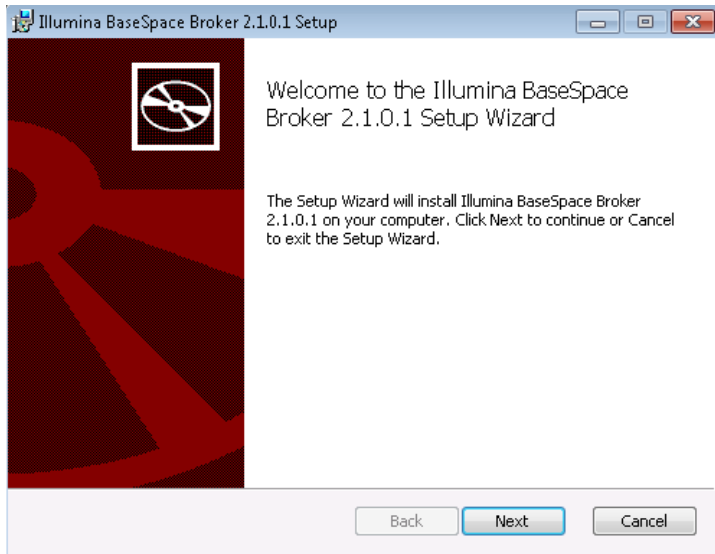


Note: if user does not desire to install basespace broker, select Cancel and select Yes on cancelling the installation. Then, select Finish to close broker install process.

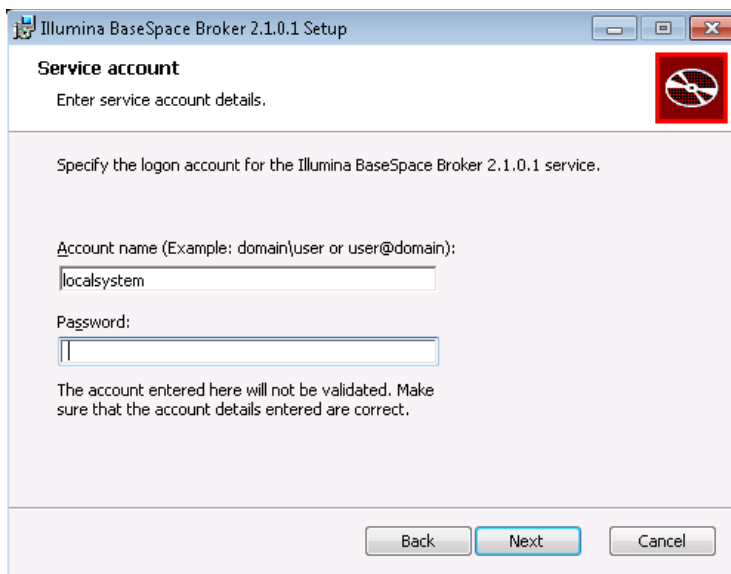
If you see this screen, press "Run" to continue installing BaseSpace Broker.



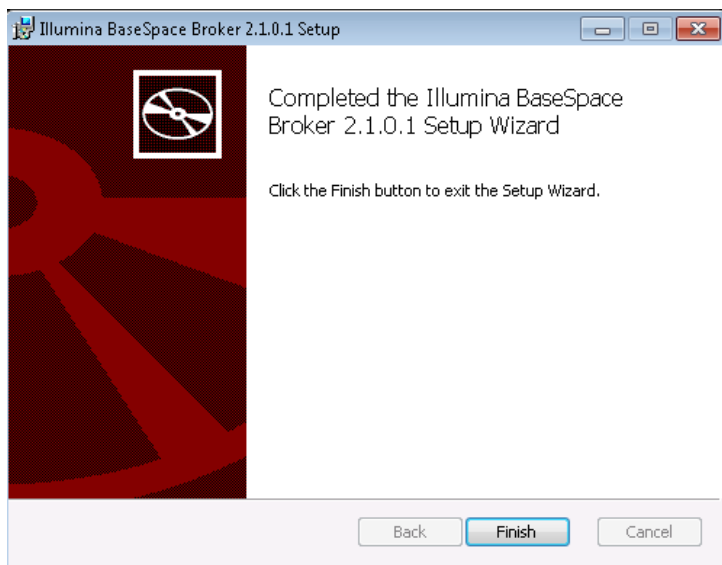
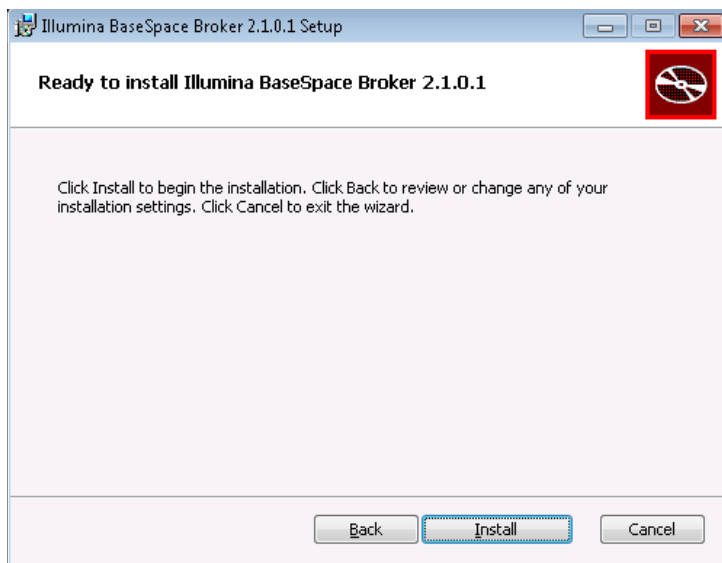
BaseSpace Broker Setup Screen



Enter "LocalSystem" and **click** on the Password text box. Leave the password field empty (no password) and select "Next".

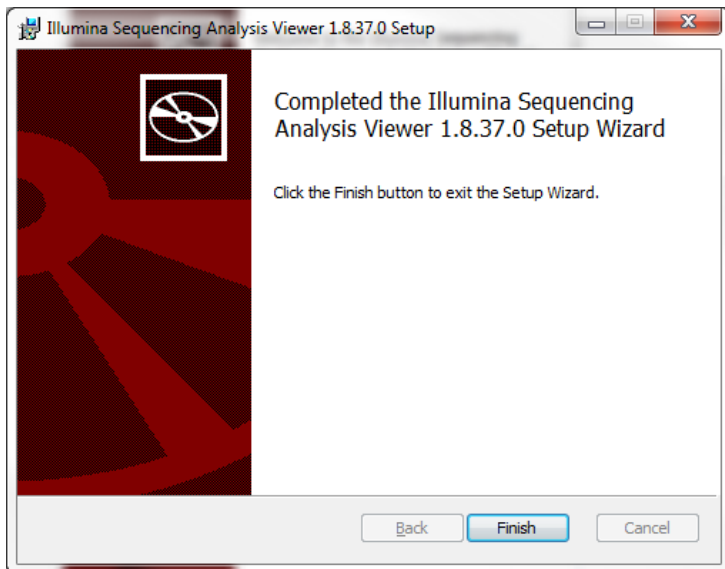
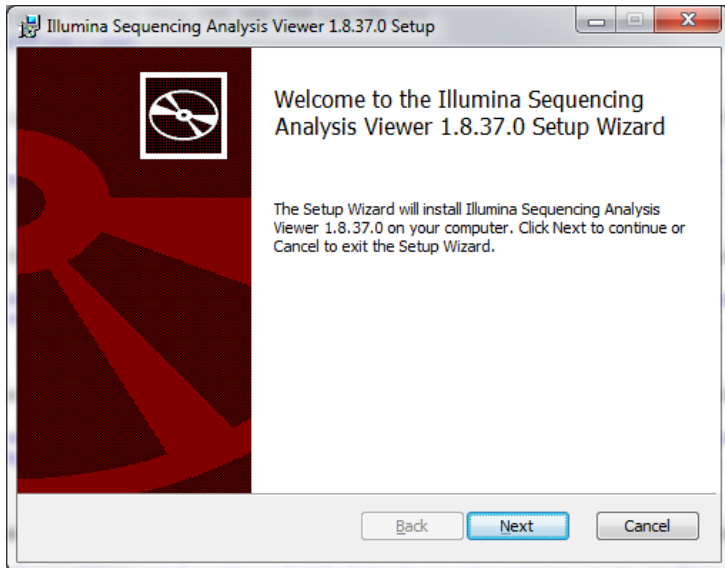


Select "Install".



NOTE: If updating from Early Access version and the BaseSpace Broker service cannot be Started after installing, navigate to D:\Illumina\basespace broker and create a folder "old runs". Move all the .dat and .xml to the "old runs" folder.

SAV Setup Screen



4. Once you have completed the installation, go to the control panel on the main Windows menu: Control Panel\Programs\Programs and Features. Ensure that only one correct version of HCS, RTA, SAV, Recipe Fragments, and Basespace Broker have been installed. If you see more than one version, please contact Illumina Technical Support.
5. Launch the HCS software from desktop shortcut and verify that the instrument initializes. Select Menu >> About and confirm that the following software versions are updated and displayed:
 - a. HCS 2.2.38
 - b. RTA 1.18.61
 - c. Recipe Fragment 1.5.14.0
 - d. SAV 1.8.37
 - e. Illumina BaseSpace Broker 2.1.0.1

Note: basespace broker version can only be checked from the Control Panel.

6. Ensure that the BaseSpace Broker service has automatically restarted and is now running. To do this, go to Control Panel, Administrative Tools, Services. From the list of Services, select BaseSpace Broker. The status should be listed as "Started". If it is not, select it from the list and manually select start.

Illumina BaseSpace Broker 2.1.0.1	Illumina Inc.	4/8/2014	12.2 MB	2.1.0.1
Illumina Experiment Manager	Illumina	2/26/2014	2.44 MB	1.7.1
Illumina HiSeq Control Software 2.2.38.0	Illumina Inc.	4/8/2014	170 MB	2.2.38.0
Illumina Override Migration Tool 1.0.6.0	Illumina Inc.	12/3/2013	459 KB	1.0.6.0
Illumina Recipe Fragment 1.5.14.0	Illumina Inc.	4/8/2014	285 KB	1.5.14.0
Illumina Reference Genome 90.0.1.2	Illumina Inc.	4/30/2012	212 KB	90.0.1.2
Illumina RTA 1.18.61.0 - 64 bit	Illumina Inc.	4/8/2014	22.1 MB	1.18.61.0
Illumina Sequencing Analysis Viewer 1.8.37.0	Illumina Inc.	4/8/2014	6.87 MB	1.8.38.0



Note: The installer will automatically rename HiSeqControlSoftware.Options.cfg to HiSeqControlSoftware.Options.cfg.old, and rename RTA.exe.config to RTA.exe.config.old. These files will be in the same directory as the new configuration files. If any custom settings were made in these configuration files, these will need to be manually merged into the new configuration files.

Network pathway definitions are contained in the Options.cfg file. This means that paths will need to be re-entered in the appropriate screen in HCS on the first time it is run.

Note: Individual installers are included for all the components as well: HCS, RTA, Recipe Fragments, SAV, and basespace broker.

- These individual installers should NOT be needed if using the Install Script.
- In case there is a problem during the installation, individual installers can be used to install individual components.
- If this occurs, first manually uninstall the program through *Control Panel > Programs and Features* before repeating the installation.

Installation Troubleshooting:

Please contact Illumina Product Support if any issues arise during installation.