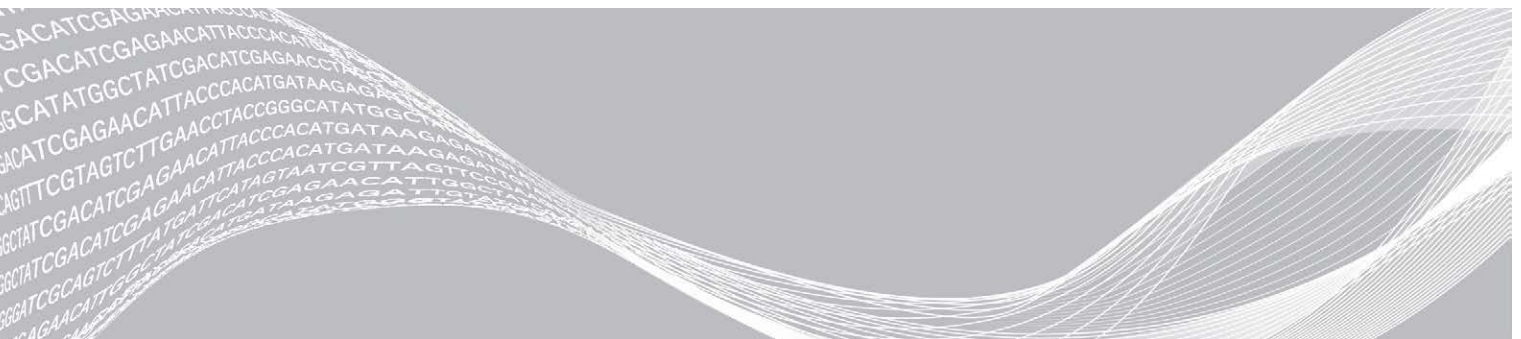


# Local Run Manager TruSight Oncology Comprehensive (EU) Analysis Module

## Workflow Guide

FOR IN VITRO DIAGNOSTIC USE  
FOR EXPORT ONLY

|  |    |
|--|----|
| Overview   | 1  |
| Enter Run Information  | 1  |
| Analysis Methods   | 7  |
| Analysis Output  | 16 |
| View Analysis Results  | 34 |
| Report Regeneration  | 36 |
| Troubleshooting  | 37 |
| Appendix A QC Metrics Flowchart                                  | 38 |
| Appendix B QC Metrics  | 40 |
| Appendix C TruSight Oncology Comprehensive (EU) Report Reference | 43 |



|  |    |
|--|----|
| Appendix D MNVs, Indels, and Deletions in EGFR and RET Detectable by Phased Variant Caller | 45 |
| Revision History   | 60 |
| Technical Assistance   | 61 |

This document and its contents are proprietary to Illumina, Inc. and its affiliates ("Illumina"), and are intended solely for the contractual use of its customer in connection with the use of the product(s) described herein and for no other purpose. This document and its contents shall not be used or distributed for any other purpose and/or otherwise communicated, disclosed, or reproduced in any way whatsoever without the prior written consent of Illumina. Illumina does not convey any license under its patent, trademark, copyright, or common-law rights nor similar rights of any third parties by this document.

The instructions in this document must be strictly and explicitly followed by qualified and properly trained personnel in order to ensure the proper and safe use of the product(s) described herein. All of the contents of this document must be fully read and understood prior to using such product(s).

FAILURE TO COMPLETELY READ AND EXPLICITLY FOLLOW ALL OF THE INSTRUCTIONS CONTAINED HEREIN MAY RESULT IN DAMAGE TO THE PRODUCT(S), INJURY TO PERSONS, INCLUDING TO USERS OR OTHERS, AND DAMAGE TO OTHER PROPERTY, AND WILL VOID ANY WARRANTY APPLICABLE TO THE PRODUCT(S).

ILLUMINA DOES NOT ASSUME ANY LIABILITY ARISING OUT OF THE IMPROPER USE OF THE PRODUCT(S) DESCRIBED HEREIN (INCLUDING PARTS THEREOF OR SOFTWARE).

© 2022 Illumina, Inc. All rights reserved.

All trademarks are the property of Illumina, Inc. or their respective owners. For specific trademark information, see [www.illumina.com/company/legal.html](http://www.illumina.com/company/legal.html).

## Overview

The Illumina® Local Run Manager TruSight™ Oncology Comprehensive (EU) Analysis Module (TSO Comprehensive analysis module) analyzes sequencing reads of DNA and RNA libraries prepared using the TruSight Oncology Comprehensive (TSO Comprehensive) assay. The intended use for the TSO Comprehensive assay can be found in *TruSight Oncology Comprehensive (EU) Package Insert (document # 200007789)*.

The TSO Comprehensive analysis module supports run setup, sequencing, analysis, and reporting for the prepared DNA and RNA libraries. For patient samples, the TSO Comprehensive analysis module generates:

- ▶ A TSO Comprehensive report for each patient sample, which includes companion diagnostic, tumor profiling, and quality control results (available in both PDF and JSON formats).
- ▶ A low depth report (\*.tsv) for each patient sample, which includes a list of genomic positions (annotated with gene symbols) having insufficient sequencing depth to rule out the presence of a small variant in a DNA library.
- ▶ A quality control metrics file (\*.tsv), which includes analysis status and quality control metrics for all patient samples in a sequencing run.

For control samples, the TSO Comprehensive analysis module generates a control output report (\*.tsv), which includes quality control results for any control samples in the sequencing run.

The TSO Comprehensive (EU) Software Suite is used to install the TSO Comprehensive analysis module and supporting software components. The TSO Comprehensive (EU) Claims Package is installed into the TSO Comprehensive analysis module. For part numbers and version numbers, refer to *TruSight Oncology Comprehensive (EU) Package Insert (document # 200007789)*.

## About This Guide

This guide provides instructions for setting up run parameters for sequencing and analysis parameters for the TSO Comprehensive analysis module. Use of the software requires basic knowledge of the current Windows operating system and web browser-based user interface. For information about the Local Run Manager dashboard and system settings, see the *NextSeq 550Dx Instrument Reference Guide (document # 1000000009513)*.

## Enter Run Information

NextSeq 550Dx instrument Local Run Manager is the software used to set up a TSO Comprehensive assay run. For more information, see the *NextSeq 550Dx Instrument Reference Guide (document # 1000000009513)*.

Enter run and sample setup information directly into the TSO Comprehensive analysis module.

## Install a Knowledge Base

The TSO Comprehensive analysis module requires an installed Knowledge Base (KB) to perform analysis. KBs are available for download on the Illumina Lighthouse portal. Illumina periodically releases new KBs. To update the KB installed on the instrument, download the most recent KB that is compatible with your TSO Comprehensive analysis module. When updating a KB, the previously installed KB is removed during the installation process. A KB should not be installed while a sequencing run, analysis, or other installation process is in progress.

**CAUTION**

To avoid data loss, make sure no other processes are in progress before following the installation instructions.

- 1 Download the desired KB (zip format) to a local directory on your instrument or a networked computer. Drive D is the preferred location.
- 2 Open Local Run Manager on your instrument or the networked computer (local area network). For more information on LRM user management, refer to *NextSeq 550Dx Instrument Reference Guide (document # 100000009513)*.
- 3 Sign in as an LRM admin or a non-admin user with permission to edit module settings.
- 4 Use the Tools menu to navigate to the Module Settings screen.
- 5 Select **TSO Comp (EU)**.
- 6 Select **Install New** under the Knowledge Base Version section of the screen.
- 7 An installation wizard will prompt you to browse to the location of the KB zip file. Make sure that you are installing the KB downloaded in step 1.  
The wizard also displays information about the KB including the name, version, RefSeq database version, and published date.
- 8 Select **Continue** in the installation wizard.  
The installer verifies that the KB is compatible with the TSO Comprehensive analysis module and that the KB is not corrupt. It is not possible to launch a new TSO Comprehensive analysis while the KB is being installed.

**CAUTION**

Navigating away from the Module Settings page or closing the browser while the KB is installing cancels the installation process.

- 9 After installation is complete, the new KB is displayed on the Module Settings screen. The KB name and version are also displayed on the Create Run, Requeue Analysis, and Edit Run screens.

## TSO Comprehensive Analysis Module Information

The TSO Comprehensive analysis module includes analysis module, KB, and claims package version information on the Module Settings screen.

- 1 Open Local Run Manager on your instrument.
- 2 Use the Tools menu to navigate to the Module Settings screen.
- 3 Select **TSO Comp (EU)**.

The Module Settings screen displays the following installation information:

- ▶ **Device Identifier**—A unique device identifier for the installed TSO Comprehensive analysis module and associated Claims Package. This identifier is not impacted by the KB version installed.
- ▶ **Product Identifier**—The version of the installed TSO Comprehensive analysis module.
- ▶ **Modified On**—The date and time that the TSO Comprehensive analysis module itself was last installed or updated.
- ▶ **Sequencing Run Settings**—Displays the read type (paired-end) and read length settings associated with the TSO Comprehensive analysis module.

- ▶ **Claims Installed**—Displays the version of the installed Claims Package and associated Companion Diagnostic claims. The Claims Package includes the companion diagnostic intended use claims that will be evaluated by the TSO Comprehensive analysis module.
- ▶ **Knowledge Base Version**—See *Install a Knowledge Base on page 1* for instructions on installing or updating the KB. This section includes Knowledge Base installation information for the following fields:

| Field          | Description  |
|----------------|--|
| Name           | The KB name.   |
| Version        | The KB version.  |
| RefSeq Version | The version of RefSeq included in the KB. When the RefSeq information originates from the Ensembl Variant Effect Predictor (VEP) <sup>1</sup> cache files, the VEP version is displayed. |
| Published      | The date the KB was published.   |
| Installed      | The date the KB was installed.   |
| State          | The state of the KB installation. Will display as Ready when installation is completed.  |

<sup>1</sup> McLaren W, Gil L, Hunt SE, et al. The ensembl variant effect predictor. *Genome Biol.* 2016 Jun 6;17(1): 122.g

## Set Run Parameters

- 1 Log in to Local Run Manager on the instrument or from a networked computer.
- 2 Select **Create Run**, and then select **TSO Comp (EU)**.
- 3 Enter a run name that identifies the run from sequencing through analysis with the following criteria.
  - ▶ 1–40 characters.
  - ▶ Only alphanumeric characters, underscores, or dashes.
  - ▶ Underscores and dashes must be preceded and followed by an alphanumeric character.
  - ▶ Unique across all runs on the instrument.
- 4 **[Optional]** Enter a run description to help identify the run with the following criteria.
  - ▶ 1–150 characters.
  - ▶ Only alphanumeric characters or spaces.
  - ▶ Spaces must be preceded and followed by an alphanumeric character.

## Specify Samples for the Run

Specify samples for the run using one of the following options.

- ▶ **Enter samples manually**—Use the blank table on the Create Run screen. See *the Number of Libraries and Selecting Indexes section in the TruSight Oncology Comprehensive (EU) Package Insert (document # 200007789)* for all the supported sample configurations.
- ▶ **Import samples**—Navigate to an external file in a comma-separated values (\*.csv) format. A template is available for download on the Create Run screen.



### CAUTION

Mismatches between the samples and index primers cause incorrect result reporting due to loss of positive sample identification. Enter sample IDs and assign indexes in Local Run Manager before beginning library preparation. Record sample IDs, indexes, and plate well orientation for reference during library preparation.

**CAUTION**

To avoid data loss, make sure KB installation is not in progress before saving a run.

## Enter Samples Manually

- 1 Enter a unique sample ID in the Sample ID field with the following criteria. **All control samples should be added first.** See *Control Samples on page 5* for more information.
  - ▶ 1–25 characters.
  - ▶ Only alphanumeric characters, underscores, or dashes.
  - ▶ Underscores and dashes must be preceded and followed by an alphanumeric character.
- 2 **[Optional]** Enter a sample description in the Sample Description field with the following criteria.
  - ▶ 1–50 characters.
  - ▶ Only alphanumeric characters, dashes, underscores, or spaces.
  - ▶ Spaces, underscores, and dashes must be preceded and followed by an alphanumeric character.
- 3 Select an index for the DNA library and/or RNA library prepared from the sample. Make sure that RNA and DNA samples are in separate columns. The DNA i7+i5 Sequence field auto-populates after selecting a DNA Index ID. The RNA i7+i5 Sequence field auto-populates after selecting an RNA Index ID. In addition to the summary here, see the Number of Libraries and Selecting Indexes section in the *TruSight Oncology Comprehensive (EU) Package Insert (document # 200007789)* for index ID selection.
  - ▶ For a DNA sample library, select a unique index ID (UPxx or CPxx indexes) from the DNA Index ID drop-down list.
  - ▶ For an RNA sample library, select a unique index ID (UPxx only) from the RNA index ID drop-down list.
  - ▶ If there are three libraries in total in the run, follow the index selection guidelines in the *TruSight Oncology Comprehensive (EU) Package Insert (document # 200007789)*.
- 4 Use the Tumor Type field to assign a tumor type for each sample, selecting the most specific tumor type available. See *Select a Tumor Type on page 5*.
- 5 Use the Tumor Type field to assign one of the following control types for each control. See *Control Samples on page 5*.
  - ▶ DNA External Control
  - ▶ RNA External Control
  - ▶ DNA No-Template Control
  - ▶ RNA No-Template Control

If using the TruSight Oncology DNA Control, the control type is DNA External Control. If using the TruSight Oncology RNA Control, the control type is RNA External Control.
- 6 Assign sex.
- 7 **[Optional]** Select **Export to CSV** to export sample information to an external file.
- 8 Review the information on the Create Run Screen. Incorrect information can impact results.
- 9 Select **Save Run**.

## Import Samples

- 1 Select **Import CSV** and browse to the location of the sample information file. There are two types of files you can import.
  - ▶ Select **Download CSV** on the Create Run screen to download a new sample information template. The CSV file contains the required column headings and format for import. Enter sample information in each column for the samples in the run. For the Tumor Type column, enter the tumor type term or associated code (see [Download Tumor Types on page 7](#)). The Tumor Type field is also used to designate samples as controls (see [Control Samples on page 5](#)).
  - ▶ Use a file of sample information that was exported from the TSO Comprehensive analysis module using the Export to CSV feature.
- 2 On the Create Run screen, review the imported information. Incorrect information can impact results.
- 3 **[Optional]** Select **Export to CSV** to export sample information to an external file.
- 4 Select **Save Run**.

## Control Samples

TSO Comprehensive assay requires the use of TruSight Oncology Controls. Designating a sample as a control automatically sets the Sex of the sample to Unknown. To designate a sample as a control, select one of four control types from the Tumor Type field: DNA External Control (positive DNA control), DNA No-Template Control, RNA External Control (positive RNA control), or RNA No-Template Control. See [Select a Tumor Type on page 5](#) for more information on setting tumor types for all types of samples during run setup.

Only one of each control type may be specified within a run. Only a DNA library may be specified for a DNA External Control or a DNA No-Template Control. Only an RNA library may be specified for an RNA External Control or an RNA No-Template Control. Libraries designated as DNA or RNA No-Template controls are not counted against the maximum number of libraries in a run.

See the *TruSight Oncology Comprehensive (EU) Package Insert (document # 200007789)* for more information on using control samples.

## Select a Tumor Type

A tumor type must be specified for each sample. Except for control types, the available tumor types are derived from the installed KB and might change with updated versions of the KB.



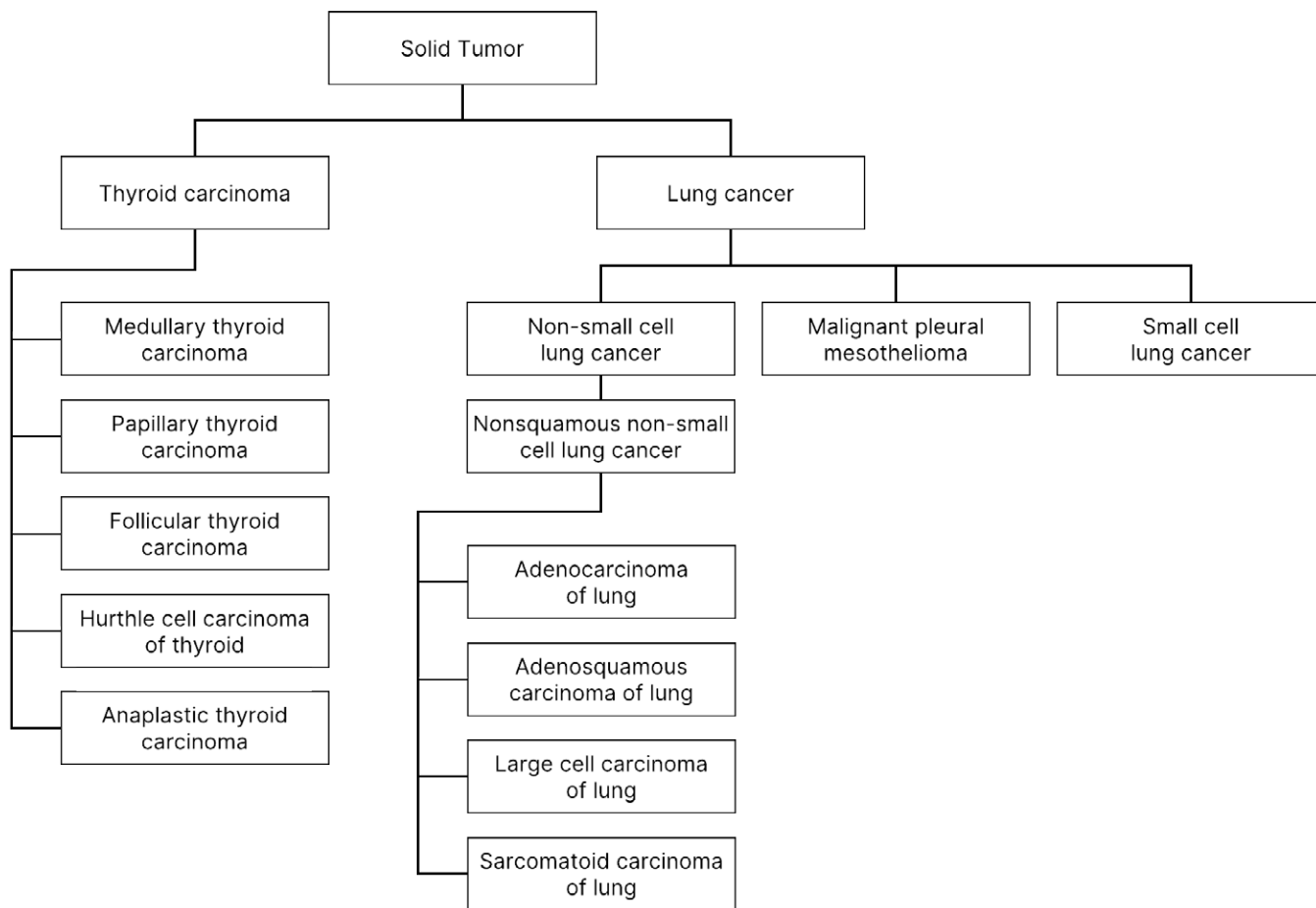
### CAUTION

Incorrect selection of tumor type can cause incorrect results. Resolve any warnings that appear when specifying tumor types to avoid analysis failure.

The tumor type terms are part of a hierarchical disease ontology in the KB, which is constructed as a set of parent-child relationships. For example, the term non-small cell lung cancer is a child of lung cancer since non-small cell lung cancer is a type of lung cancer. [Figure 1](#) depicts a subset of an example disease ontology, showing solid tumor as the root term, and the terms associated with lung cancer and thyroid cancer (other tumor types are not shown). A term that is connected through parent-child relationships to lower-level terms is called an ancestor. The connected lower-level terms are descendants of the ancestor term. For example, lung cancer is an ancestor of adenocarcinoma of lung and small cell lung cancer, and medullary thyroid carcinoma is a descendant of both thyroid carcinoma and solid tumor.



**Figure 1** Subset of an Example Disease Ontology



The selected tumor type for a patient sample impacts:

- ▶ Which companion diagnostic intended use(s) are evaluated for the sample. Only patient samples with a tumor type that is an exact match or a descendent of the tumor type for a companion diagnostic intended use will be evaluated for that claim.
- ▶ Which tumor profiling variants are included in the TSO Comprehensive assay report. See *Tumor Profiling of Variants on page 14*.

The following instructions describe the process for selecting a tumor type through the Create Run screen. The tumor type can also be set by importing a CSV file containing a tumor type (see *Import Samples on page 5*).

- 1 Display the available tumor types by double-clicking within the Tumor Type cell in the row for the sample. Available tumor types are displayed in a hierarchical list organized alphabetically. The Tumor Type field is also used to designate a control type for control samples (see *Control Samples on page 5*).
- 2 Locate and select the desired tumor type by interacting with the list or by using the search bar at the top of the Tumor Type window.

## Download Tumor Types

A full list of available tumor types in TSV format can be downloaded from the Create Run screen using the **Download Tumor Types TSV** button. The list contains the following information:

- ▶ The tumor type term visible in the user interface.
- ▶ The full path of the tumor type within the tumor type hierarchy (disease ontology).
- ▶ The code used by the TSO Comprehensive analysis module to identify the tumor type.

## Edit Run and Initiate Sequencing

For instructions on editing the run information and initiating a sequencing run, see the *NextSeq 550Dx Instrument Reference Guide (document # 1000000009513)*. Analysis and Reporting begins once a sequencing run is complete.

For storage considerations, a sequencing run can produce 40–100 GB of output. Secondary analysis of a sequencing run can produce 100–200 GB of output.

## Analysis Methods

After sequencing data are collected, they are processed by the TSO Comprehensive analysis module to perform quality control, detect variants, determine Tumor Mutational Burden (TMB) and Microsatellite Instability (MSI) status, determine companion diagnostic results, assess the clinical significance and potential clinical significance of detected variants, and report results. The following sections describe the analysis methods.

## Run Quality Control

Sequencing run quality metrics are evaluated to determine if they are within an acceptable range. The overall percentage of reads passing filter is compared to a minimum threshold. For Read 1 and Read 2, the average percentage of bases  $\geq$  Q30, which gives a prediction of the probability of an incorrect base call (Q-score), are also compared to a minimum threshold. If values for each of these three metrics meet the specifications, then Run QC will be reported as PASS and analysis will continue. If a value for any one of the metrics fails to meet the specification, then Run QC will be reported as FAIL and analysis will not proceed. For more information see [Quality Control Metrics on page 40](#).

## FASTQ Generation

Sequencing data stored in BCL format is demultiplexed through a process that uses the index sequences, unique to each sample that was added during the library preparation step, to assign clusters to the library from which they originated. Each cluster contains two indexes (i5 and i7 sequences, one at each end of the library fragment), and the combination of those index sequences are used to demultiplex the pooled libraries.

After demultiplexing, this process generates FASTQ files, which contain the sequencing reads for each individual sample library and the associated quality scores for each base call, excluding reads from any clusters that did not pass filter.

## DNA Alignment and Error Correction

DNA alignment and error correction involves aligning sequencing reads derived from DNA sample libraries to a reference genome and correcting errors in the sequencing reads prior to variant calling.

The alignment step uses the Burrows-Wheeler Aligner (BWA-MEM) with the SAMtools utility to align DNA sequences in FASTQ files to the hg19 reference genome, generating BAM files (\*.bam) and BAM index files (\*.bam.bai).

The initial BAM files are further processed to remove errors (including errors introduced during PCR amplification or sequencing), wherein reads derived from the same unique DNA molecule are collapsed into a single representative sequence, leveraging their unique molecular identifier (UMI) incorporated into the library fragments during library preparation.

A second round of alignment using BWA-MEM and SAMtools is performed on the UMI-collapsed reads, resulting in a second set of BAM files with corresponding BAM index files. These BAM files are used as input for gene amplification calling.

Finally, candidate insertions and deletions are identified from the collapsed BAM alignments, and the read pairs are realigned against those candidate insertions and deletions to rescue insertions and deletions signals that may have been missed due to misalignment. Simultaneously, overlapping read pairs are stitched (ie, bioinformatically combined) into a single consensus read. All reads are then output as a third set of BAM files with corresponding BAM index files. These BAM files are used as input for small variant calling, microsatellite instability (MSI) status determination, and DNA library quality control.

## Small Variant Calling

Small variant calling is performed for DNA sample libraries (excluding DNA no-template controls) to detect small variants, including single-nucleotide variants (SNVs), multi-nucleotide variants (MNVs) up to 3 base pairs (bp) in length, and insertions and deletions up to 25 bp in length. Certain MNVs, indels (one or more nucleotides replaced by one or more nucleotides and is not an SNV or MNV), and deletions might require a phasing approach to be detected. A predefined set of MNVs, indels, and deletions are detected for the EGFR and RET genes (see [Appendix D MNVs, Indels, and Deletions in EGFR and RET Detectable by Phased Variant Caller on page 45](#)) using a phasing approach. The phasing approach for small variant calling is limited to only these variants. The variant calling algorithms do not differentiate between variants of somatic or germline origin.

## Small Variant Detection

The error-corrected BAM files (collapsed and insertions and deletions realigned) are used as input by an initial variant calling algorithm to detect small variants. The initial variant calling step results in unfiltered genome Variant Call Format (gVCF) files, which contain reference or variant case calls for each locus targeted by the TSO Comprehensive assay.

## Small Variant Filtering

Candidate variants are then filtered for recurrent (assay-specific) artifacts and formalin-fixed, paraffin-embedded (FFPE) deamination (sample-specific) artifacts. To address assay-specific artifacts, an adjusted quality score is calculated by comparing the observed variant frequency against a baseline noise distribution for the same site. This distribution was derived from profiling a set of normal FFPE samples of varying qualities through the TSO Comprehensive assay. To address sample-specific artifacts, the reads supporting the variant call are stratified by error rate, with reads originating from duplex/stitched reads having the lowest error rate and reads originating from simplex (ie, nonduplex/unstitched) reads having the highest error rate. These error rates are estimated by evaluating all loci with reported variant allele frequencies below 5%. Non-reference reads at these sites are largely due to error, and true somatic events—because of their relative rarity—will not significantly impact these error rate estimates. Because these read classes, duplex/stitched and simplex, have different, sample-specific error rates, confident

detection of a candidate variant may require more or fewer reads as a function of that error rate. For example, at a coverage depth of 200 reads, a variant may be confidently called with three high-quality supporting reads, or with five lower-quality supporting reads.

Candidate variants that do not have sufficient read support based on this error-aware model or which have low adjusted quality scores are tagged with a LowSupport filter flag and are considered as reference calls. In the event that the site also has insufficient coverage for variant calling (less than 100x), the variant is tagged with a LowDP filter flag and is considered as a no-call. Variants with high prevalence in COSMIC3 have lower thresholds for each of these quality metrics compared to non-COSMIC variants. This filtering step results in filtered gVCF files.

## Small Variant Phasing

A phased variant caller is used to identify certain MNVs, indels, and deletions in the EGFR and RET genes. The algorithm identifies variants in the EGFR and RET genes that are candidates for phasing in the filtered gVCF files from the previous step and arranges the variants into local neighborhoods. It then mines the error-corrected BAM file for any evidence that these small variants occur in the same clonal sub-populations with each other (ie, in phase with each other). This is done by clustering overlapping reads in the neighborhood into a minimal set of clusters which contain the same variants. Variants are detected by examining the Concise Idiosyncratic Gapped Alignment Report (CIGAR) strings in the BAM file and comparing read sequences to the reference genome sequence.

## Small Variant Merging

Finally, MNVs, indels, and deletions detected by the phased variant caller are merged into the filtered gVCF files. Only those MNVs, indels, and deletions from a predefined list of variants in the EGFR and RET genes are eligible for merging into the gVCF (see [Appendix D MNVs, Indels, and Deletions in EGFR and RET Detectable by Phased Variant Caller on page 45](#)). MNVs, indels, and deletions from the phased variant caller take precedence over those that may already exist in the gVCF from the initial variant calling step. This step results in merged gVCF files.

## Small Variant Annotation

Detected small variants are annotated using the Nirvana annotation engine with information from the RefSeq database, as well as various population databases (COSMIC, ClinVar, dbSNP, 1000 Genomes, and gnomAD). Annotation of small variants is performed multiple times independently as described in the following sections.

### Static Annotation Databases for TMB Calculation

Nirvana is used to annotate filtered small variant calls with static (not updatable) annotation databases for use by downstream TMB calculation (see [Tumor Mutational Burden on page 10](#)). The gVCF from the Small Variant Phasing step (see [Small Variant Calling on page 8](#)) is used as input. Variants detected by the phased variant caller are not used for TMB calculation.

### Static Annotation Databases for Companion Diagnostic Calling

Nirvana is used to annotate filtered small variant calls with static (not updatable) annotation databases for use by downstream Companion Diagnostic calling (see [Companion Diagnostic Calling on page 13](#)). The gVCF from the Small Variant Phasing step (see [Small Variant Calling on page 8](#)) is used as input.

## Updatable RefSeq Database for Tumor Profiling

Nirvana is used to annotate filtered small variant calls with an updatable RefSeq database as part of a downstream Tumor Profiling of Variants process (see [Tumor Profiling of Variants on page 14](#)). The updatable RefSeq database is included as part of the KB, and may be updated periodically to be compatible with other KB content.

## Gene Amplification Calling

Gene amplification calling is performed for DNA sample libraries (excluding DNA no-template controls). An algorithm is used to identify amplified genes and calculate the fold change value for the amplification genes targeted by the TSO Comprehensive assay. A fold change for a given gene is derived from the normalized read depth of the gene in the sample relative to the normalized read depth of diploid regions from the same sample. A fold change exceeding a gene specific cutoff is considered a gene amplification. This analysis step results in a VCF file, summarizing gene amplification status and calculated fold change for each targeted amplification gene.

## Tumor Mutational Burden

TMB is calculated for DNA sample libraries (excluding DNA no-template controls). A TMB score is generated from the gVCF file generated by the Small Variant Filter step (see [Small Variant Calling on page 8](#)) and the annotations generated during Small Variant Annotations. SNVs and insertions and deletions variants are included in calculating the TMB score, which is derived from the count of non-driver somatic variants per megabase (evaluatable region). Driver mutations are identified and filtered based on COSMIC count. While the TSO Comprehensive assay does not differentiate between variants of somatic or germline origin for purposes of small variant calling, variants are flagged as likely germline for the purpose of calculating the TMB score, leveraging a combination of population database and post-database filtering strategies. Variants that are observed frequently across population database are likely of germline origin. After database filtering, the proxi filter labels variants as germline if they are surrounded by database labeled germline variants. Variants identified as likely germline are excluded from the TMB score calculation. The evaluatable region is dynamically adjusted per sample based on sequencing depth. Genomic regions with a high background noise level are excluded from the TMB calculation. TMB is calculated as the number of somatic non-hotspot variants with VAF  $\geq 5\%$  divided by the evaluatable region size.

## Microsatellite Instability Status

To determine the MSI status of a sample, a total of 130 predefined MSI sites are evaluated. For each site, the repeat length distribution is compared against a panel of normal samples to see if the repeat distribution is significantly shifted. The final MSI score is calculated as the number of unstable sites divided by the total number of usable sites (ie, sites with sufficient coverage). A sample is considered MSI-H if its MSI score is  $\geq 20.00\%$ .

## Quality Control for DNA Sample Libraries

DNA sample libraries (patient samples only) are assessed for potential contamination by DNA from other samples (foreign DNA) using a combination of a contamination score and a contamination p-value. In contaminated samples, there are germline variants (single nucleotide polymorphisms, or SNPs) that have VAF shifts from expected values of 0%, 50%, or 100%. The algorithm computes a log likelihood score across all common SNP positions where SNV calls are reported. The larger the contamination score, the more likely there is foreign DNA contamination. The rearrangement p-value summarizes a chromosome imbalance score, which represents the overall likelihood of the observed variant calls across each chromosome. A sample is considered to be contaminated if both the contamination score and

rearrangement p-value are above predefined quality thresholds. If contamination is detected, then DNA Library QC will be reported as Fail and no results will be available for small variants, gene amplifications, MSI, or TMB. Additionally, a companion diagnostic or tumor profiling result may not be available if it relies on DNA library QC passing.

QC metrics are used to assess the validity of small variant calling, TMB, MSI, and gene amplifications for DNA sample libraries that pass contamination quality control. If the sample library fails one or more quality metrics, then the corresponding variant type or biomarker is not reported, and the associated QC category in the report header will display as FAIL. Additionally, a companion diagnostic or tumor profiling result may not be available if it relies on QC passing for one or more of the below QC categories.

DNA library QC results are available in the MetricsOutput.tsv file. See [Metrics Output on page 31](#).

## Low Depth Reporting for DNA Sample Libraries

A Low Depth Report is generated for each patient sample with a DNA library, which includes a listing of genomic positions with a total sequencing depth <100 and for which a passing small variant was not detected. These positions have insufficient sequencing depth to rule out the presence of a small variant. Note that it is still possible to detect variants with a total sequencing depth <100 if there is sufficient sequencing depth of the variant allele.

Contiguous positions of low depth overlapping the same genes are combined into genomic ranges in the Low Depth Report. Each genomic range in the report is annotated with one or more RefSeq gene symbols. The RefSeq annotation is based on the RefSeq database included as part of the KB, and may change with a KB update.

See [Low Depth Report on page 33](#) for details on the content.

## RNA Alignment

RNA alignment is performed for RNA sample libraries, and includes preprocessing of unaligned sequencing reads, aligning sequencing reads to a reference genome, and postprocessing of aligned sequencing reads.

First, RNA sequences in FASTQ files are downsampled to approximately 30 million reads per RNA sample library. This is done by randomly selecting reads from the input FASTQ files following a probability distribution. Next the ends of RNA sequences are trimmed to a maximum length of 76 base pairs.

Preprocessed reads are then aligned to the hg19 reference genome and candidate splice junctions are identified. This generates BAM files and BAM index files for aligned reads, and a tab-delimited text file for candidate splice junctions.

Finally, duplicate reads are marked in the BAM files, such that they can be excluded from downstream steps. This step generates BAM files and BAM index files that are used as input to RNA Fusion Calling and RNA Splice Variant Calling.

## RNA Fusion Calling

Fusion calling is performed for RNA sample libraries (excluding RNA no-template controls). Candidate fusions are identified from anomalous read pairs (ie, reads aligning to different chromosomes or in unexpected orientations) in the BAM files (generated during RNA Alignment) for the fusion genes targeted by the TSO Comprehensive assay. Fusion-supporting reads are assembled into candidate fusion contigs. Candidate fusion contigs are then aligned back to the reference genome. These candidate fusion contigs are then evaluated against a variety of filters prior to being reported as detected. These filters are summarized in the following table.

| Filter           | Description  |
|------------------|--|
| Imprecise        | A low-resolution candidate, not an assembled fusion call.  |
| RepeatOverlap    | The fusion is tagged as overlapping with a repeat region. Only used as a filter for nonuniquely mapping fusion candidates.   |
| WeakBreakend     | The read/alignment evidence on one side of the fusion is weak. Usually this filter indicates that the reads only overlap the fusion by a few base pairs. Alternatively, it can indicate too much homology. |
| DuplicateContig  | The two half-contigs of the fusion are comprised of the same sequence.   |
| ContigIntragenic | The realignment of half-contigs produces alignments that map to the same gene on both sides (or within 1 kb if unannotated).   |
| LowQ             | Unique fusion supporting reads is less than a predefined threshold (threshold is 5 for 9-16 million reads; 6 for 16-26 million reads; 7 for 26-30 million reads).  |

Additional fusions may be detected through the RNA Splice Variant Calling process (see [RNA Splice Variant Calling on page 12](#) and [RNA Fusion Merging on page 12](#)).

## RNA Splice Variant Calling

RNA splice variant calling is performed for RNA sample libraries (excluding RNA no-template controls). Candidate splice variants (junctions) from RNA Alignment are compared against a database of known transcripts and a splice variant baseline of non-tumor junctions generated from a set of normal FFPE samples from different tissue types. Any splice variants that match the database or baseline are filtered out unless they are in a set of junctions with known oncological function. If there is sufficient read support, the candidate splice variant is kept. This process also identifies candidate RNA fusions (see [RNA Fusion Merging on page 12](#)).

## RNA Fusion Merging

Fusions identified during RNA Fusion Calling are merged with fusions from proximal genes identified during RNA Splice Variant Calling. These are then annotated with gene symbols or names with respect to a static database of transcripts (GENCODE Release 19). The result of this process is a set of fusion calls that are eligible for reporting.

## RNA Splice Variant Annotation

Detected RNA splice variants are annotated using the Nirvana annotation engine with information from the RefSeq database. Annotation of splice variants is performed multiple times independently as described in the following sections.

### Static RefSeq Database for Companion Diagnostic Calling

Nirvana is used to annotate detected RNA splice variant calls with a static (not updatable) RefSeq databases for use by downstream Companion Diagnostic calling (see [Companion Diagnostic Calling on page 13](#)). Splice variants are annotated with transcript-level changes (ie, affected exons in a gene's transcript) with respect to RefSeq. This RefSeq database is the same as the static RefSeq database used by the Small Variant Annotation process.

### Updatable RefSeq Database for Tumor Profiling

Nirvana is used to annotate detected RNA splice variant calls with an updatable RefSeq database as part of a downstream Tumor Profiling of Variants process (see [Tumor Profiling of Variants on page 14](#)). Splice



variants are annotated with transcript-level changes (ie, affected exons in a gene's transcript) with respect to RefSeq. The updatable RefSeq database is included as part of the KB, and may be updated periodically to be compatible with other KB content.

## Quality Control for RNA Sample Libraries

QC metrics are used to assess the validity of RNA sample libraries. If a QC metric is not within the acceptable range, then RNA Library QC will be reported as FAIL and no results will be available for fusions or splice variants. Additionally, a companion diagnostic or tumor profiling result may not be available if it relies on RNA library QC passing.

RNA library QC results are available in the MetricsOutput.tsv file. See [Metrics Output on page 31](#).

## Transcripts

A transcript is a strand of RNA that is transcribed from DNA. That RNA can then be translated to create a protein. A gene may have multiple transcripts, such as if different promoters are used, or there are different exon splice patterns. Each transcript has a unique number. In HGVS nomenclature, a nucleotide change that affects a coding sequence can be listed with reference to a transcript, with the first letter indicating the wild type allele and the second letter indicating the variant allele. For example, NM\_004333.4:c.1799T>A means that at position 1799 of transcript NM\_004333.4, the coding RNA encodes a T in the reference genome, but is changed to an A for this variant.

## Control Reporting

A control output report is generated for each analysis and includes an assessment of each control sample included in the run. The TSO Comprehensive analysis module does not automatically invalidate patient samples based on control sample results.

See the *TruSight Oncology Comprehensive (EU) Package Insert (document # 200007789)* for guidance on run validity and patient sample validity based on results for control samples.

The control output report is available in the ControlOutput.csv file. See [Control Output Report on page 29](#).

## Companion Diagnostic Calling

For each installed companion diagnostic (CDx) intended use, the TSO Comprehensive analysis module determines the applicability of the CDx intended use for each patient sample based on the patient sample's tumor type. If the patient sample's tumor type is an exact match or a descendent of the tumor type for a CDx intended use, it is considered applicable to that CDx intended use. See [Select a Tumor Type on page 5](#) for more information on the disease ontology. If the patient's tumor type is not applicable to a CDx intended use, then the CDx intended use will not be evaluated for that sample.

If a required sequencing library (DNA or RNA) for a CDx intended use is not sequenced or fails QC, then the patient sample will not be evaluated for that CDx intended use. If a variant type (eg, small variants) or biomarker required for a CDx intended use fails QC, then the patient sample will not be evaluated for that CDx intended use.

Once it is determined that a CDx intended use is applicable for a patient sample, the required libraries are sequenced, and required QC measures pass, the companion diagnostic intended use will be evaluated for the patient sample. Detected variants and/or biomarkers in the patient sample are evaluated to determine the result for the CDx intended use. This is done through an algorithm specific to the CDx intended use, which assesses the presence and/or absence of variants/biomarkers that match the CDx intended use.



## Companion Diagnostics Results

CDx calling results are made available in the TSO Comprehensive report (see *TruSight Oncology Comprehensive Report on page 16*). Positive CDx intended uses are reported in the Companion Diagnostics Results section of the TSO Comprehensive report.

## Tumor Profiling of Variants

After companion diagnostic results are determined, all passing, detected variants in a patient sample are matched against the installed KB to determine the genomic findings that have evidence of clinical significance or have potential clinical significance. This process is called Tumor Profiling of Variants. A genomic finding is either a single variant with evidence of clinical significance or potential clinical significance, or a grouping of variants that, when detected together, have evidence of clinical significance or potential clinical significance.

When multiple variants are listed together as a genomic finding, it means that there is evidence for clinical significance or potential clinical significance for those variants together, in at least one of the sources listed in the Informatics Details of the report. If there are multiple genomic findings, and a variant is included in more than one of these, that variant may be listed more than once on a report. A single variant will only be listed at the highest level where it meets criteria for reporting. Each of the following examples of clinical meaning involved multiple variants:

- ▶ NTRK1 p.(Gly595Arg) is indicated to cause resistance to one or more TRK inhibitors, in patients with a qualifying TRK fusion (FDA-approved prescribing information Larotrectinib 211710s000lbl).
- ▶ A patient in the LIBRETTO-001 clinical trial was observed to have both RET D898\_E901del and RET D903\_S904delinsEP. The patient exhibited tumor response to treatment with a RET inhibitor (PMID 32846061).
- ▶ An exploratory analysis of the BOLERO-1 and -3 trials suggested that breast cancer patients with ERBB2 amplification derived clinical benefit from mTOR inhibition if the tumors displayed PI3K pathway activation or AKT1 E17K mutations (PMID 27091708).
- ▶ A BRAF p.(Val600Glu) mutation co-occurring with TERT promoter mutation is associated with an unfavorable prognosis in papillary thyroid carcinoma per major US guidelines.

## Genomic Findings with Evidence of Clinical Significance

Genomic findings with evidence of clinical significance are reported in the Genomic Findings with Evidence of Clinical Significance section of the TSO Comprehensive report (see *TruSight Oncology Comprehensive Report on page 16*). Genomic findings are reported in Genomic Findings with Evidence of Clinical Significance if they meet the following criteria:

- ▶ The genomic finding is associated with benefit or lack of benefit to a therapy, as evidenced by an EMA-approved drug label or FDA-approved drug label. The sample's tumor type must be equal to or a descendant of the KB association's tumor type in the disease ontology. See *Select a Tumor Type on page 5* for more information on the disease ontology.
- ▶ The genomic finding is associated with benefit or lack of benefit to a therapy, has diagnostic relevance, or has prognostic relevance as evidenced by a published ESMO, ASCO, or other major US clinical practice guideline. The sample's tumor type must be equal to or a descendant of the KB association's tumor type in the disease ontology. See *Select a Tumor Type on page 5* for more information on the disease ontology.

## Genomic Findings with Potential Clinical Significance

Genomic findings with potential clinical significance are reported in the Genomic Findings with Potential Clinical Significance section of the TSO Comprehensive report (see *TruSight Oncology Comprehensive Report on page 16*). Genomic findings are reported in Genomic Findings with Potential Clinical Significance if they meet the following criteria:

- ▶ The genomic finding meets Genomic Findings with Evidence of Clinical Significance criteria (ie, EMA-approved drug label, FDA-approved drug label, ESMO guideline, ASCO guideline, or other major US guideline), but only when the sample's tumor type is not a match to the KB association's tumor type. The sample's tumor type therefore must not be equal to and not be a descendant of the KB association's tumor type.
- ▶ The variant has a therapeutic, diagnostic, or prognostic association in the clinical literature describing a clinical study. The sample's tumor type must be equal to or a descendant of the KB association's tumor type.
- ▶ The variant is included in eligibility criteria for an enrolling clinical trial (phase I/II, II, II/III, III, or IV) registered at clinicaltrials.gov or the EU Clinical Trials Register (EUCTR). The sample's tumor type must be equal to or a descendant of the clinical trial's tumor type.

TMB and MSI are always reported in Genomic Findings with Potential Clinical Significance, regardless of the sample's tumor type.

## Leveling Changes Due to KB Updates

As clinical evidence accumulates for variants in precision oncology, KB updates are made available to reflect the changes. Variants that were initially not reportable due to lack of clinical evidence may later be reported in Genomic Findings with Evidence of Clinical Significance or Genomic Findings with Potential Clinical Significance through a KB content update. Likewise, variants may move from Genomic Findings with Evidence of Clinical Significance to Genomic Findings with Potential Clinical Significance or vice versa. Detected variants not meeting the criteria for any level are not reported. Susceptibility or cancer risk associations are excluded from the KB and do not impact leveling. Therapeutic associations used for leveling are limited to targeted cancer therapies and immunotherapies (not including cell-based immunotherapies).

## Positive CDx Results

Companion diagnostic variants reported in Companion Diagnostics Results are excluded from being reported as single-variant genomic findings in Genomic Findings with Evidence of Clinical Significance and Genomic Findings with Potential Clinical Significance. However, genomic findings involving multiple variants might still be reported in Genomic Findings with Evidence of Clinical Significance and Genomic Findings with Potential Clinical Significance, even if one of the variants is reported in Companion Diagnostic Results.

## COSMIC Annotations

Variants reported in Genomic Findings with Evidence of Clinical Significance or Genomic Findings with Potential Clinical Significance are annotated with a COSMIC ID, as applicable, from the Catalog of Somatic Mutations in Cancer (COSMIC) database, which is included as part of the KB.

## Analysis Output

When the analysis is completed, the Local Run Manager TruSight Oncology Comprehensive Analysis Module generates an analysis folder in the configured output folder for the system. See the *NextSeq 550Dx Instrument Reference Guide (document # 1000000009513)* for more information on configuring the output folder.

To view analysis output:

- 1 Navigate to the directory that contains the analysis folder.
- 2 Open the analysis folder to view output files.  
The analysis folder name will be formatted as **Analysis\_#** where # defaults to 1 and is incremented by one for each analysis requeue. A subfolder, **YYYYMMDD\_HHMMSS**, is created inside the analysis folder and indicates the date and time of the analysis (eg, 20210101\_145958).

## Files

This section describes the summary output files generated during analysis.

## Results Reports

TSO Comprehensive reports in PDF and JSON formats are produced for each patient sample that completed analysis successfully. Results are displayed for preview on the Samples and Results tab in the Results Reports section. Samples that did not complete analysis successfully are listed with an error message. Select **Export Report** to download one TSO Comprehensive report in PDF format. See the analysis output folder for TSO Comprehensive reports for all completed samples.

## TruSight Oncology Comprehensive Report

The following tables describe the sections that make up the TSO Comprehensive reports produced for each patient sample in PDF and JSON formats. The PDF report is human readable, while the JSON report is built of data structures that are intended for machines to parse. Information found only in the JSON report and not reflected in the PDF report is marked as N/A for the PDF report. Variants not reported in Companion Diagnostic Results or not meeting the criteria for inclusion in Genomic Findings with Evidence of Clinical Significance or Genomic Findings with Potential Clinical Significance are not included in the reports.

See the *TruSight Oncology Comprehensive (EU) Package Insert (document # 200007789)* for interpretation of results.

Refer to the JSON schema on the TSO Comprehensive support pages on the Illumina support site for additional information on the structure, fields, and possible values in the JSON report.

- **Sample, Run, and Analysis Information**—Contains general information about the patient sample and the report.

| Field in PDF report | Field in JSON report          | Description   |
|---------------------|-------------------------------|---|
| Report Date         | reportDate                    | Date that the report was generated.                       |
| N/A                 | reportTime                    | Time that the report was generated.                       |
| Sample ID           | sampleInformation / sampleId  | Sample Identifier. Patient demographics are not included. |
| Tumor Type          | sampleInformation / tumorType | Tumor type associated with the patient sample.            |

| Field in PDF report | Field in JSON report                  | Description   |
|---------------------|---------------------------------------|---|
| N/A                 | sampleInformation / tumorTypeCode     | Tumor type code associated with the patient sample.   |
| N/A                 | sampleInformation / tumorTypePath     | Tumor type path (with respect to the disease ontology) associated with the patient sample.      |
| N/A                 | sampleInformation / tumorTypeCodePath | Tumor type code path (with respect to the disease ontology) associated with the patient sample. |
| Sex                 | sampleInformation / sex               | Patient sex (Male, Female, or Unknown).   |
| Analysis Date       | sampleInformation / analysisDate      | Date that the secondary analysis was completed.   |
| N/A                 | sampleInformation / analysisTime      | Time that the secondary analysis was completed.   |
| Run ID              | sampleInformation / analysisRunId     | Sequencing run ID.  |
| N/A                 | sampleInformation / analysisRunName   | Sequencing run name.  |

- **Quality Control**—Contains quality control information. For more information on how quality control is evaluated refer to [Appendix A QC Metrics Flowchart on page 38](#).

| Field in PDF report | Field in JSON report   | Description   |
|---------------------|--|---|
| Run QC              | qualityControl / status / (array item having label = "Run QC")         | <p>Run QC (PASS, FAIL, or N/A) applies to all samples contained in a single sequencing run.</p> <p><b>PASS</b>—The run is valid.</p> <p><b>FAIL or N/A</b>—The run is invalid. All RNA and DNA sample-specific QC statuses are N/A (DNA Library QC, DNA MSI QC, DNA Small Variant, and TMB QC, DNA Copy Number Variant QC, RNA Library QC) and there are no variants or biomarkers listed in the report.</p> <p>Refer to the <i>TruSight Oncology Comprehensive (EU) Package Insert (document # 200007789)</i> for guidance on run validity and patient sample validity based on results for control samples.</p> |
| RNA Library QC      | qualityControl / status / (array item having label = "RNA Library QC") | <p>RNA Library QC (PASS, FAIL, or N/A) applies to the RNA library that was sequenced.</p> <p><b>PASS</b>—the RNA library passed all the RNA-specific QC metrics.</p> <p><b>FAIL</b>—the RNA library failed one or more of the RNA-specific QC metrics.</p> <p><b>N/A</b>—the RNA library for the sample was not sequenced, or Run QC had a value of FAIL.</p> <p>If the value is FAIL or N/A, there are no RNA variant types (fusion or splice variants) in the report.</p>   |
| DNA Library QC      | qualityControl / status / (array item having label = "DNA Library QC") | <p>DNA Library QC (PASS, FAIL, or N/A) applies to the DNA library that was sequenced.</p> <p><b>PASS</b>—the DNA library passed the contamination QC metric.</p> <p><b>FAIL</b>—the DNA library failed the contamination QC metric.</p> <p><b>N/A</b>—the DNA library for the sample was not sequenced, or Run QC had a value of FAIL.</p> <p>If the value is FAIL or N/A, no DNA variant types (small variants, copy number variants) or DNA biomarkers (TMB, MSI) are reported.</p>   |

| Field in PDF report          | Field in JSON report   | Description   |
|------------------------------|--|---|
| DNA MSI QC                   | qualityControl / status / (array item having label = "DNA MSI QC")                 | DNA MSI QC (PASS, FAIL, or N/A) applies to the DNA library that was sequenced.<br><b>PASS</b> —the DNA library passed the MSI-specific QC metric and upstream DNA Library QC metric.<br><b>FAIL</b> —the DNA library failed the MSI-specific QC metric.<br><b>N/A</b> —the DNA library for the sample was not sequenced, DNA Library QC for the sample was FAIL, or Run QC had a value of FAIL.<br>If the value is FAIL or N/A, the biomarker MSI is not reported and listed as Not evaluable.  |
| DNA Small Variant and TMB QC | qualityControl / status / (array item having label = "DNA Small Variant & TMB QC") | DNA Small Variant and TMB QC (PASS, FAIL, or N/A) apply to the DNA library that was sequenced.<br><b>PASS</b> —the DNA library passed the Small Variant and TMB specific QC metrics and upstream DNA Library QC metric.<br><b>FAIL</b> —the DNA library failed one or more of the Small Variant and TMB-specific QC metrics.<br><b>N/A</b> —the DNA library for the sample was not sequenced, DNA Library QC for the sample was FAIL, or Run QC had a value of FAIL.<br>If the value is FAIL or N/A, there are no small variants in the report, and the biomarker TMB is listed as Not evaluable. |
| DNA Copy Number Variant QC   | qualityControl / status / (array item having label = "DNA Copy Number Variant QC") | DNA Copy Number Variant (CNV) QC (PASS, FAIL, or N/A) applies to the DNA library that was sequenced.<br><b>PASS</b> —the DNA library passed all the Copy Number Variant specific QC metrics and upstream DNA Library QC metric.<br><b>FAIL</b> —the DNA library failed one or more of the Copy Number Variant specific QC metrics.<br><b>N/A</b> —the DNA library for the sample was not sequenced, DNA Library QC for the sample was FAIL, or Run QC had a value of FAIL.<br>If the value is FAIL or N/A, there are no gene amplifications in the report.  |

- ▶ **TruSight Oncology Comprehensive Analysis Module and Knowledge Base Configuration**—Contains information on the software and KB versions used when the report was generated.

| Field in PDF report           | Field in JSON report                               | Description   |
|-------------------------------|--|---|
| Knowledge Base Version        | softwareConfiguration / knowledgeBaseVersion       | Version of the Knowledge Base installed with the TSO Comprehensive analysis module. |
| Knowledge Base Published Date | softwareConfiguration / knowledgeBasePublishedDate | Date associated with the Knowledge Base that was used to generate the report.       |
| Module Version                | softwareConfiguration / moduleSoftwareVersion      | Version of the TSO Comprehensive analysis module used to generate the report.       |
| Claims Package Version        | softwareConfiguration / claimsPackageVersion       | Version of the Claims Package installed with the TSO Comprehensive analysis module. |

- ▶ **Companion Diagnostic Results**—Results for companion diagnostic (CDx) intended uses where an associated variant or biomarker was detected are listed in the PDF and JSON reports. Additional companion diagnostic intended uses where an associated variant or biomarker was not detected, or which were not evaluated, are listed in the JSON report only. See *Companion Diagnostics Intended Uses Evaluated* on page 22.

| Field in PDF report             | Field(s) in JSON report   | Description   |
|---------------------------------|---|---|
| [Message box]                   | reportFindings /<br>companionDiagnosticResults<br>/ results / noEntryText   | A message is optionally displayed in this section. The following message is possible:<br><b>No Companion Diagnostic biomarkers for the stated sample tumor type were detected</b> —This message is included when either of the following is true for all CDx intended uses: <ul style="list-style-type: none"> <li>• The sample passes QC, but no associated variant or biomarker was detected or its tumor type is inapplicable.</li> <li>• The sample fails required QC metrics and its tumor type is inapplicable.</li> </ul>  |
| [Message box]                   | reportFindings /<br>companionDiagnosticResults<br>/ results / message   | A message is optionally displayed in this section. The following message is possible:<br><b>One or more biomarkers or variant types failed QC, or the appropriate nucleic acid was not run</b> —This message is included when at least one CDx intended use applicable to the sample's tumor type could not be evaluated due to a QC failure or due to not having a sequenced DNA or RNA library. Any detected CDx biomarkers appear in a table below this message. See <i>Companion Diagnostics Intended Uses Evaluated on page 22</i> for reasons why a CDx intended use was not evaluated. |
| N/A                             | reportFindings /<br>companionDiagnosticResults<br>/ results / genomicFindings /<br>(array item for CDx intended<br>use) /<br>companionDiagnosticName  | Name of the companion diagnostic intended use. Includes biomarker description, therapy, and tumor type.   |
| Detected<br>Variants/Biomarkers | reportFindings /<br>companionDiagnosticResults<br>/ results / genomicFindings /<br>(array item for CDx intended<br>use) / variants  | A list of detected variants or biomarkers associated with a detected CDx intended use for the sample.<br>In the JSON report, this field is empty for CDx intended uses if the result is not equal to detected.  |
| Therapy                         | reportFindings /<br>companionDiagnosticResults<br>/ results / genomicFindings /<br>(array item for CDx intended<br>use) / therapy   | The therapy associated with the CDx intended use.   |
| Usage                           | reportFindings /<br>companionDiagnosticResults<br>/ results / genomicFindings /<br>(array item for CDx intended<br>use) / usage   | Usage of the CDx therapy (Indicated or See Note). In the JSON report, this field is present for CDx intended uses if the result is not equal to detected.<br><b>Indicated</b> —the associated therapy is indicated for use.<br><b>See Note</b> —a note describes usage of the therapy.  |
| Details                         | reportFindings /<br>companionDiagnosticResults<br>/ results / genomicFindings /<br>(array item for CDx intended<br>use) / note<br><br>reportFindings /<br>companionDiagnosticResults<br>/ results / genomicFindings /<br>(array item for CDx intended<br>use) / variants / (array item for<br>variant in genomic finding) | Contains an optional note and a list of variant details. In the PDF report, the order of variant details corresponds to the order of variants listed for Detected Variants/Biomarkers field. See <a href="#">Table 1</a> , <a href="#">Table 2</a> , <a href="#">Table 3</a> , and <a href="#">Table 4</a> for a list of variant detail fields. In the JSON report, these fields are empty for CDx intended uses if the result is not equal to detected.  |

| Field in PDF report | Field(s) in JSON report   | Description  |
|---------------------|---|--|
| N/A                 | reportFindings / companionDiagnosticResults / results / genomicFindings / (array item for CDx intended use) / detailedResult / result | <p>A coded value for the result of the CDx intended use. Possible values include the following:</p> <p><b>detected</b>—The CDx intended use is applicable to the sample’s tumor type, and one or more variants or biomarkers associated with the CDx intended use was detected in the sample.</p> <p><b>notDetected</b> —The CDx intended use is applicable to the sample’s tumor type, but no variants or biomarkers associated with the CDx intended use were detected in the sample.</p> <p><b>tumorTypeNonMatch</b>—The CDx intended use is not applicable to the sample’s tumor type.</p> <p><b>nucleicAcidNA</b>—The sample did not have a DNA or RNA library sequenced, which is required for the CDx intended use.</p> <p><b>qcFail</b>—The CDx intended use was not evaluated due to a QC failure.</p> <p><b>didNotCompleteAnalysis</b>—Analysis did not complete successfully for the sample.</p> <p><b>negative</b>—Placeholder value for future use.</p> |

- ▶ **Other Alterations and Biomarkers Identified**—This section contains tumor profiling information for the sample, with detected variants, TMB and MSI categorized into Genomic Findings with Evidence of Clinical significance, or Genomic Findings with Potential Clinical Significance. See *Tumor Profiling of Variants on page 14* for details on how a level is determined for detected variants.
- ▶ **Genomic Findings with Evidence of Clinical Significance**—Each entry in this section is a genomic finding, which is either a single variant with evidence of clinical significance or a grouping of variants that when detected together have evidence of clinical significance. If no variants are detected, the report displays a No Detected Variants message.

| Field in PDF report | Field in JSON report   | Description  |
|---------------------|--|--|
| Detected Variants   | reportFindings / otherFindings / genomicFindingsWithEvidenceOfClinicalSignificance / results / genomicFindings / (array item for genomic finding) / variants   | <p>A list of detected variants that are part of the genomic finding.</p> <p>For small variants, includes the gene symbol and protein change, transcript change, or genomic change in Human Genome Variation Society (HGVS) format, eg, NRAS p.(Gln61Arg).</p> <p>For gene amplifications, includes the gene symbol followed by Gain, eg, ERBB2 Gain.</p> <p>For fusions, includes the symbols or names of both partner genes (from GENCODE Release 19), separated by a - or /. When separated by a -, the reported gene order corresponds to the transcribed orientation (5’ to 3’). When separated by a /, orientation could not be determined. If multiple genes are overlapping a breakpoint, all are listed and delimited by semicolons.</p> <p>For splice variants, includes the gene symbol and affected exon(s) (as applicable), eg, MET Exon 14 skipped.</p> |
| Details             | reportFindings / otherFindings / genomicFindingsWithEvidenceOfClinicalSignificance / results / genomicFindings / (array item for genomic finding) / variants / (array item for variant in genomic finding) | <p>Contains a list of variant details. In the PDF report, the order of variant details corresponds to the order of variants listed for Detected Variants/Biomarkers field. See <i>Table 1, Table 2, Table 3, and Table 4</i> for a list of variant detail fields.</p>  |



- **Genomic Findings with Potential Clinical Significance**—TMB and MSI are both reported in this section when there is a sequenced DNA library for the sample. Each other entry in this section is a genomic finding, which is either a single variant with potential clinical significance or a grouping of variants that when detected together have potential clinical significance. If no variants are detected, the report displays a No Detected Variants message.

| Field in PDF report | Field in JSON report   | Description   |
|---------------------|--|---|
| TMB                 | reportFindings / otherFindings / biomarkers / tumorMutationalBurden  | TMB is a measurement of the number of estimated somatic mutations carried by tumor cells per megabase in the coding region. TMB is reported as Not evaluable if it could not be evaluated either due to a QC failure or a DNA library for the sample was not sequenced. TMB is always included in Genomic Findings with Potential Clinical Significance.  |
| MSI                 | reportFindings / otherFindings / biomarkers / microsatelliteInstability  | MSI status. Possible values include the following:<br><b>MSI-Stable</b> —Microsatellite stable.<br><b>MSI-High</b> —Microsatellite instability-high.<br><b>Not evaluable</b> —MSI status could not be evaluated either due to a QC failure or a DNA library for the sample was not sequenced.<br>MSI is always included in Genomic Findings with Potential Clinical Significance.   |
| Detected Variants   | reportFindings / otherFindings / genomicFindingsWithPotentialClinicalSignificance / results / genomicFindings / (array item for genomic finding) / variants / (all array items) / detectedVariantLabel | A list of detected variants that are part of the genomic finding.<br>For small variants, includes the gene symbol and protein change, transcript change, or genomic change in Human Genome Variation Society (HGVS) format, eg, NRAS p.(Gln61Arg).<br>For gene amplifications, includes the gene symbol followed by Gain, eg, ERBB2 Gain.<br>For fusions, includes the symbols or names of both partner genes (from GENCODE Release 19), separated by a - or /. When separated by a -, the reported gene order corresponds to the transcribed orientation (5' to 3'). When separated by a /, orientation could not be determined. If multiple genes are overlapping a breakpoint, all are listed and delimited by semicolons.<br>For splice variants, includes the gene symbol and affected exon(s) (as applicable), eg, MET Exon 14 skipped. |
| Details             | reportFindings / otherFindings / genomicFindingsWithPotentialClinicalSignificance / results / genomicFindings / (array item for genomic finding) / variants  | Contains a list of variant details. In the PDF report, the order of variant details corresponds to the order of variants listed for Detected Variants/Biomarkers field. See <a href="#">Table 1</a> , <a href="#">Table 2</a> , <a href="#">Table 3</a> , and <a href="#">Table 4</a> for a list of variant detail fields.  |

- **Companion Diagnostics QC**—This section lists genomic positions associated with a CDx intended use which had insufficient depth to make a confident reference call. Only those CDx intended uses which involve small variants and which were evaluated for a sample are listed.

| Field in PDF report | Field in JSON report   | Description   |
|---------------------|--|---|
| [Position list]     | reportFindings / companionDiagnosticResults / qualityControl / insufficientQuality / entries / (array item for CDx intended use) / positions | A list of genomic positions for the associated CDx intended use having insufficient coverage. |



- **Companion Diagnostics Intended Uses Evaluated**—This section lists all installed CDx intended uses, with a field indicating whether the CDx intended use was evaluated for the sample. If a CDx intended use was not evaluated, a reason is listed.

| Field in PDF report        | Field in JSON report   | Description  |
|----------------------------|--|--|
| Tumor Type                 | reportFindings / companionDiagnosticResults / qualityControl / intendedUsesEvaluated / companionDiagnosticTable / entries / (array item for CDx intended use) / tumorType            | According to the Intended Use statement.   |
| Biomarkers                 | reportFindings / companionDiagnosticResults / qualityControl / intendedUsesEvaluated / companionDiagnosticTable / entries / (array item for CDx intended use) / biomarkers           | According to the Intended Use statement.   |
| Therapy                    | reportFindings / companionDiagnosticResults / qualityControl / intendedUsesEvaluated / companionDiagnosticTable / entries / (array item for CDx intended use) / therapy              | According to the Intended Use statement.   |
| CDx Intended Use Evaluated | reportFindings / companionDiagnosticResults / qualityControl / intendedUsesEvaluated / companionDiagnosticTable / entries / (array item for CDx intended use) / intendedUseEvaluated | <p>Indicates if the CDx intended use was evaluated for the sample (Yes/No). Evaluation of the CDx intended use requires passing the specific QC categories of the nucleic acid or variant/biomarker type associated with the CDx intended use.</p> <p>CDx intended uses associated with detection of small variants (SNV, MNV, Indel) require DNA to be sequenced and the following QC categories to pass:</p> <ul style="list-style-type: none"> <li>• Run QC</li> <li>• DNA Library QC</li> <li>• DNA Small Variant &amp; TMB QC</li> </ul> <p>CDx intended uses associated with the detection of fusions require RNA to be sequenced and the following QC categories to pass:</p> <ul style="list-style-type: none"> <li>• Run QC</li> <li>• RNA Library QC</li> </ul> <p>To be evaluated, the sample's tumor type must either be equal to or a subtype of the tumor type listed in the Companion Diagnostics Intended Uses Evaluated table. See <a href="#">Select a Tumor Type on page 5</a>.</p> |
| Comment                    | reportFindings / companionDiagnosticResults / qualityControl / intendedUsesEvaluated / companionDiagnosticTable / entries / (array item for CDx intended use) / comment              | <p>If CDx Intended Use Evaluated field is Yes and there are no additional comments needed, this field displays a dash.</p> <p>If CDx Intended Use Evaluated field is Yes and there are additional comments to list, a comment such as the following may be displayed. Example:</p> <ul style="list-style-type: none"> <li>• Some genomic positions associated with the CDx claim had insufficient coverage. Refer to the section Companion Diagnostics Genomic Positions with Insufficient Coverage for Small Variant Detection for details.</li> </ul> <p>If CDx Intended Use Evaluated field is No, a comment such as the following is displayed. Examples:</p> <ul style="list-style-type: none"> <li>• Tumor Type of sample does not match tumor type corresponding to the CDx Intended Use.</li> <li>• DNA or RNA data associated with a CDx biomarker. not available</li> <li>• Required QC category did not pass.</li> </ul>  |

- **About the Test, Informatics Details, Limitations**—Contains general information about the test as well as a list of limitations.

| Field in PDF report | Field in JSON report                         | Description   |
|---------------------|--|---|
| About the Test      | about / description                          | Test description.   |
| Informatics Details | details / (one JSON property per subsection) | A brief description of the report sections and other informatics details. |
| Limitations         | limitations / description                    | List of assay and report limitations.                                     |

- **TruSight Oncology Comprehensive Gene Panel**—Contains information about the gene panel.

| Field in PDF report | Field(s) in JSON report   | Description  |
|---------------------|---|--|
| Gene Panel          | genePanel / geneList / genes<br>genePanel / geneList / genes / variants | The list of genes that are part of the panel, including a footnote indicating which variant types are evaluated for which genes. Small variants are called in all genes. |

**Table 1 Small Variant Details in Report**

| Field in PDF report | Field in JSON report (relative path in variant JSON object)                        | Description   |
|---------------------|--|---|
| Type                | type / value   | The detailed type of variant. Possible values for small variants include:<br><b>SNV</b> —Single nucleotide variant.<br><b>Insertion</b> —Addition of nucleotides of up to 25 bp.<br><b>Deletion</b> —Removal of nucleotides of up to 25 bp.<br><b>MNV</b> —Multi-nucleotide variant, being a substitution of two or three nucleotides with the same number of nucleotides.<br><b>Indel</b> —One or more nucleotides replaced by one or more nucleotides and is not an SNV or MNV. This is commonly referred to as delins. |
| VAF                 | additionalInfo / (array item having label property = "VAF") / value                | Variant allele frequency (as a percentage).   |
| Consequence         | additionalInfo / (array item having label property = "Consequence" ) / value       | Variant consequence from the Sequence Ontology.   |
| Nucleotide Change   | additionalInfo / (array item having label property = "Nucleotide Change" ) / value | Change to the coding DNA reference sequence (i.e., RefSeq transcript) in HGVS nomenclature. If the variant does not impact a transcript, the change to the genomic reference sequence in HGVS nomenclature is included.   |
| Genomic Position    | additionalInfo / (array item having label property = "Genomic Position" ) / value  | Genomic position (hg19) in chromosome:position format. Refers to the position of the first base in the reference allele.  |
| Reference Allele    | additionalInfo / (array item having label property = "Reference Allele" ) / value  | Reference allele.   |
| Alternate Allele    | additionalInfo / (array item having label property = "Alternate Allele" ) / value  | Alternate allele.   |

| Field in PDF report | Field in JSON report (relative path in variant JSON object)                           | Description  |
|---------------------|---|--|
| N/A                 | cosmicIds   | List of genomic mutation IDs associated with the variant from the Catalogue of Somatic Mutations In Cancer (COSMIC) database, as applicable.   |
| N/A                 | detailedSmallVariantData / vcfChromosome  | Chromosome.  |
| N/A                 | detailedSmallVariantData / vcfPosition  | Genomic position (hg19). Refers to the position of the first base in the reference allele (detailedSmallVariantData / referenceAllele field).  |
| N/A                 | detailedSmallVariantData / vcfRefAllele   | The reference allele.  |
| N/A                 | detailedSmallVariantData / vcfVariantFrequency  | Variant allele frequency.  |
| N/A                 | detailedSmallVariantData / annotation / transcripts                                   | Detailed transcript-level annotations for a transcript (as applicable). Only a single preferred transcript is included.  |
| N/A                 | detailedSmallVariantData / annotation / transcripts / (first array item) / transcript | Transcript ID.   |
| N/A                 | detailedSmallVariantData / annotation / transcripts / (first array item) / source     | Transcript source (eg, RefSeq).  |
| N/A                 | detailedSmallVariantData / annotation / transcripts / (first array item) / bioType    | An Ensembl biotype classification for the transcript.  |
| N/A                 | detailedSmallVariantData / annotation / transcripts / (first array item) / aminoAcids | The change in amino acids, as applicable (eg, G/D).  |
| N/A                 | detailedSmallVariantData / annotation / transcripts / (first array item) / cdnaPos    | cDNA position.   |
| N/A                 | detailedSmallVariantData / annotation / transcripts / (first array item) / codons     | Codon sequence change (eg, gGt/gAt), as applicable.  |
| N/A                 | detailedSmallVariantData / annotation / transcripts / (first array item) / cdsPos     | Coding sequence position, as applicable.   |
| N/A                 | detailedSmallVariantData / annotation / transcripts / (first array item) / exons      | The exon(s) affected by the variant, and total exon count, as applicable. For example, 4-6/7 would indicate that exons 4, 5, and 6 were affected and that this transcript contains 7 exons in total. |
| N/A                 | detailedSmallVariantData / annotation / transcripts / (first array item) / introns    | The introns affected by the variant, as applicable.  |
| N/A                 | detailedSmallVariantData / annotation / transcripts / (first array item) / geneld     | National Center for Biotechnology Information (NCBI) gene ID.  |

| Field in PDF report | Field in JSON report (relative path in variant JSON object)                            | Description  |
|---------------------|--|--|
| N/A                 | detailedSmallVariantData / annotation / transcripts / (first array item) / hgnc        | HUGO Gene Nomenclature Committee (HGNC) gene symbol.   |
| N/A                 | detailedSmallVariantData / annotation / transcripts / (first array item) / consequence | Array of variant consequences from the Sequence Ontology.  |
| N/A                 | detailedSmallVariantData / annotation / transcripts / (first array item) / hgvs        | Change to the coding DNA reference sequence (ie, RefSeq transcript) in HGVS nomenclature, as applicable.   |
| N/A                 | detailedSmallVariantData / annotation / transcripts / (first array item) / hgvsp       | Change to the protein sequence in HGVS nomenclature, as applicable.  |
| N/A                 | detailedSmallVariantData / annotation / transcripts / (first array item) / isCanonical | Displays true if this transcript is considered the canonical transcript of the gene, otherwise false. A canonical transcript for a gene is determined as follows:<br>Only NM & NR transcripts are included.<br>Transcripts for a gene are sorted in the following order: <ul style="list-style-type: none"> <li>• Locus Reference Genomic (LRG) entries come before non-LRG entries.</li> <li>• Descending CDS length.</li> <li>• Descending transcript length.</li> <li>• Accession number.</li> </ul> With this sorting, the first transcript is considered canonical. |
| N/A                 | detailedSmallVariantData / annotation / transcripts / (first array item) / proteinId   | Protein ID.  |
| N/A                 | detailedSmallVariantData / annotation / transcripts / (first array item) / proteinPos  | Protein position.  |

Table 2 Gene Amplification Details in Report

| Field in PDF report | Field in JSON report (relative path in variant JSON object) | Description   |
|---------------------|---|---|
| Type                | type / value  | The detailed type of variant. Possible values for gene amplifications include:<br><b>CNV</b> —Copy number variant (gene amplifications are the only copy number variants listed in the report). |
| Fold Change         | detailedCopyNumberVariantData / foldChange                  | The fold-change of normalized read depth in the sample relative to the normalized read depth in diploid genomes.  |
| N/A                 | detailedCopyNumberVariantData / copyNumberType              | Value is <DUP> for all gene amplifications.   |
| N/A                 | detailedCopyNumberVariantData / gene                        | Gene symbol.  |
| N/A                 | detailedCopyNumberVariantData / chromosome                  | Chromosome of the gene.   |
| N/A                 | detailedCopyNumberVariantData / startPosition               | Start position (hg19) of the gene.  |
| N/A                 | detailedCopyNumberVariantData / endPosition                 | End position (hg19) of the gene.  |

Table 3 Fusion Details in Report

| Field in PDF report     | Field in JSON report (relative path in variant JSON object)                      | Description  |
|-------------------------|--|--|
| Type                    | type / value   | The detailed type of variant. Possible values for fusions include:<br><b>Fusion</b>  |
| Breakpoint 1            | additionalInfo / (array item having label property = "Breakpoint 1" )            | Observed fusion breakpoint 1 in RNA. Chromosome:position format (hg19).  |
| Breakpoint 2            | additionalInfo / (array item having label property = "Breakpoint 2" )            | Observed fusion breakpoint 2 in RNA. Chromosome:position format (hg19).  |
| Fusion Supporting Reads | additionalInfo / (array item having label property = "Fusion Supporting Reads" ) | Count of fusion supporting reads.  |
| N/A                     | detailedGeneFusionData / fusionDirectionalityKnownAndIndicatedByGeneOrder        | Displays true when gene/breakpoint order corresponds to the transcribed orientation (5' to 3'). Displays false when orientation could not be determined.   |
| N/A                     | detailedGeneFusionData / fusionSupportingReads                                   | Count of fusion supporting reads.  |
| N/A                     | detailedGeneFusionData / partner1 / gene   | Symbols or name (from GENCODE Release 19) of gene(s) overlapping Breakpoint 1. Multiple genes overlapping the same breakpoint are delimited by semicolons. |
| N/A                     | detailedGeneFusionData / partner1 / chromosome                                   | Chromosome of breakpoint 1.  |
| N/A                     | detailedGeneFusionData / partner1 / position                                     | Position (hg19) of breakpoint 1.   |
| N/A                     | detailedGeneFusionData / partner2 / gene   | Symbols or name (from GENCODE Release 19) of gene(s) overlapping Breakpoint 2. Multiple genes overlapping the same breakpoint are delimited by semicolons. |
| N/A                     | detailedGeneFusionData / partner1 / chromosome                                   | Chromosome of breakpoint 1.  |
| N/A                     | detailedGeneFusionData / partner1 / position                                     | Position (hg19) of breakpoint 1.   |

Table 4 Splice Variant Details in Report

| Field in PDF report | Field in JSON report (relative path in variant JSON object)               | Description   |
|---------------------|---|---|
| Type                | type / value  | The detailed type of variant. Possible values for fusions include:<br><b>Splice Variant</b>                                       |
| Affected Exon(s)    | additionalInfo / (array item having label property = "Affected Exon(s)" ) | The exon(s) affected by the splice variant, as applicable. For examples, 4-6 would indicate that exons 4, 5, and 6 were affected. |
| Transcript          | additionalInfo / (array item having label property = "Transcript" )       | Transcript ID (RefSeq).   |
| Breakpoint Start    | additionalInfo / (array item having label property = "Breakpoint Start" ) | Observed splice variant breakpoint start in RNA. Chromosome:position format (hg19).   |
| Breakpoint End      | additionalInfo / (array item having label property = "Breakpoint End" )   | Observed splice variant breakpoint end in RNA. Chromosome:position format (hg19).   |

| Field in PDF report     | Field in JSON report (relative path in variant JSON object)                      | Description  |
|-------------------------|--|--|
| Splice Supporting Reads | additionalInfo / (array item having label property = "Splice Supporting Reads" ) | Count of splice supporting reads.  |
| N/A                     | detailedSpliceVariantData / breakPointStartChromosome                            | Chromosome of breakpoint start.  |
| N/A                     | detailedSpliceVariantData / breakPointStartPosition                              | Position (hg19) of breakpoint start.   |
| N/A                     | detailedSpliceVariantData / breakPointEndChromosome                              | Chromosome of breakpoint end.  |
| N/A                     | detailedSpliceVariantData / breakPointEndPosition                                | Position (hg19) of breakpoint end.   |
| N/A                     | detailedSpliceVariantData / spliceSupportingReads                                | Count of splice supporting reads.  |
| N/A                     | detailedSpliceVariantData / annotation / source                                  | Transcript source (e.g., RefSeq).  |
| N/A                     | detailedSpliceVariantData / annotation / gene                                    | Gene symbol.   |
| N/A                     | detailedSpliceVariantData / annotation / affectedExons                           | The exon(s) affected by the splice variant, and total exon count, as applicable. For examples, 4-6/7 would indicate that exons 4, 5, and 6 were affected and that this transcript contains 7 exons in total. |
| N/A                     | detailedSpliceVariantData / annotation / transcript                              | Transcript ID.   |

## Sample Sheet

File name: SampleSheet.csv

For each analysis, the TSO Comprehensive analysis module creates a comma-delimited sample sheet (SampleSheet.csv). This file contains sample information provided to the software during the run setup. These sample sheets contain a header with information about the run and descriptors for the sample libraries processed in a particular flow cell (one data row per sample library).



### CAUTION

Modifying the sample sheet file will cause adverse effects downstream, including incorrect results or analysis failure.

The following table provides sample sheet data details:

| Column Name        | Description   |
|--------------------|---|
| Sample_ID          | Sample ID with “-DNA” appended for DNA libraries or “-RNA” appended for RNA libraries.  |
| I7_Index_ID        | i7 index name. See <i>Illumina Adapter Sequences (document # 1000000002694)</i> for details on how the sample sheet index ID maps to the index ID entered during run setup. |
| index              | i7 index sequence.  |
| I5_Index_ID        | i5 index name. See <i>Illumina Adapter Sequences (document # 1000000002694)</i> for details on how the sample sheet index ID maps to the index ID entered during run setup. |
| index2             | i5 index sequence.  |
| Sample_Type        | DNA or RNA.   |
| Pair_ID            | Sample ID (same ID is used for a DNA library and RNA library from the same sample).   |
| Sample_Description | Sample description.   |
| Tumor_Type         | Tumor type for patient samples. Control type for control samples.   |
| Sex                | Sex (Male, Female or Unknown).  |

## Control Output Report

File name: ControlOutput.csv

The control output report is a tab-delimited file that provides quality control information for any control samples that were included in the run. The TSO Comprehensive analysis module does not automatically invalidate patient samples based on control sample results. See the *TruSight Oncology Comprehensive (EU) Package Insert (document # 200007789)* for guidance on run validity and patient sample validity based on results for control samples.

The control output report contains the following sections and their associated fields (run ID is included prior to the first section):

- ▶ **Control Types**—Contains information about each control sample included in the run.

| Field                 | Description  |
|-----------------------|--|
| Control Type          | The control type of the control sample. Possible values include DNA External Control, DNA No-Template Control, RNA External Control, or RNA No-Template Control.   |
| Sample_ID             | Sample ID of the control sample. Value is (Not Run) if this control type was not included in the run.  |
| AnalysisComplete      | Indication of whether analysis completed for this control sample. Possible values include TRUE, FALSE, NA.   |
| Overall Result        | The QC result for the control sample. Possible values include PASS, FAIL, NA.  |
| Sensitivity Value     | The calculated sensitivity value for the control sample. Represents the ratio of detected control variants to the total number of expected control variants in the control sample. Only applicable for the following control types: DNA External Control and RNA External Control. |
| Sensitivity Threshold | The minimum sensitivity value required for the control sample to have a QC result of PASS. Only applicable for the following control types: DNA External Control and RNA External Control.   |

- ▶ **Analysis Details**—Contains information on the analysis.

| Field            | Description   |
|------------------|---|
| Report Date      | The date the control report was generated.            |
| Report Time      | The time the control report was generated.            |
| Module Version   | The version of the TSO Comprehensive analysis module. |
| Pipeline Version | The version of the analysis pipeline/workflow.        |

- ▶ **Sequencing Run Details**—Contains information on the sequencing run.

| Field                               | Description  |
|-------------------------------------|--|
| Run Name                            | The name of the sequencing run.  |
| Run Date                            | The date of the sequencing run.  |
| Instrument ID                       | The unique ID associated with the sequencing instrument.                 |
| Instrument Control Software Version | NextSeq Control Software (NCS) version in use for the run.               |
| Instrument Type                     | The sequencing instrument type.  |
| RTA Version                         | Real-Time Analysis (RTA) software version in use for the sequencing run. |
| Reagent Cartridge Lot Number        | The lot number of the reagent cartridge used for the run.                |

- ▶ **Analysis Status**—Contains information on whether analysis completed for each control sample, and whether any samples failed due to a software error.



| Field               | Description  |
|---------------------|--|
| Sample_ID           | Sample ID of the control sample. Value is (Not Run) for control type(s) not included in the run.   |
| COMPLETED_ALL_STEPS | Indicates whether the control sample completed all steps of the analysis. Possible values include TRUE, FALSE, NA. If the value is FALSE, contact Illumina technical support for more information. |
| FAILED_STEPS        | A list of any failed analysis steps due to a software error. Contact Illumina technical support for more information if any step is listed here.   |
| STEPS_NOT_EXECUTED  | A list of any analysis steps not executed due to a software error. Contact Illumina technical support for more information if any step is listed here.   |

- ▶ **Small Variants Truth Table Results**—Contains information on which control DNA small variants in the DNA External Control (positive DNA control) were detected or not detected (one row per control variant). NA values will be listed if the DNA External Control was not included in the sequencing run.

| Field              | Description  |
|--------------------|--|
| Detected           | Indicates whether the control DNA small variant was detected in the control sample. Possible values include TRUE, FALSE, NA. |
| HGNC Gene Name     | HUGO Gene Nomenclature Committee (HGNC) gene symbol associated with the control DNA small variant.                           |
| Chromosome         | Chromosome of the control DNA small variant.   |
| Position           | Position (hg19) of the control DNA small variant.  |
| Reference Allele   | Reference allele of the control DNA small variant.   |
| Alternative Allele | Alternate/alternative allele of the control DNA small variant.   |

- ▶ **Splice Variants Truth Table Results**—Contains information on which control RNA splice variants in the RNA External Control (positive RNA control) were detected or not detected (one row per control variant). NA values will be listed if the RNA External Control was not included in the sequencing run.

| Field          | Description   |
|----------------|---|
| Detected       | Indicates whether the control RNA splice variant was detected in the control sample. Possible values include TRUE, FALSE, NA. |
| HGNC Gene Name | HGNC gene symbol associated with the control RNA splice variant.  |
| Breakpoint 1   | Chromosome and position (hg19) of the first breakpoint of the control RNA splice variant.                                     |
| Breakpoint 2   | Chromosome and position (hg19) of the second breakpoint of the control RNA splice variant.                                    |

- ▶ **Fusions Truth Table Results**—Contains information on which control RNA fusion variants in the RNA External Control (positive RNA control) were detected or not detected (one row per control variant). NA values will be listed if the RNA External Control was not included in the sequencing run.

| Field            | Description   |
|------------------|---|
| Detected         | Indicates whether the control RNA fusion variant was detected in the control sample. Possible values include TRUE, FALSE, NA. |
| HGNC Gene Name 1 | HGNC gene symbol associated with the first breakpoint of the control RNA fusion variant.                                      |
| HGNC Gene Name 2 | HGNC gene symbol associated with the second breakpoint of the control RNA fusion variant.                                     |

- ▶ **DNA NTC Library QC Metrics**—Contains information on the quality control metric that was evaluated for the DNA No-Template Control. The status of PASS indicates that the value for the metric is within the lower specification limit (LSL) and upper specification limit (USL) ranges. The status of FAIL indicates that value for the metric is outside of LSL or USL range. NA values will be listed if the DNA No-Template Control was not included in the sequencing run.

| Metric               | Description  | Units | Quality Threshold |
|----------------------|--|-------|-------------------|
| MEDIAN_EXON_COVERAGE | Median exon fragment coverage across all exon bases. | Count | ≤ 8               |

- ▶ **RNA NTC Library QC Metrics**—Contains information on the quality control metric that was evaluated for the RNA No-Template Control. The status of PASS indicates that the value for the metric is within the lower specification limit (LSL) and upper specification limit (USL) ranges. The status of FAIL indicates that value for the metric is outside of LSL or USL range. NA values will be listed if the RNA No-Template Control was not included in the sequencing run.

| Metric                   | Description  | Units | Quality Threshold |
|--------------------------|--|-------|-------------------|
| GENE_ABOVE_MEDIAN_CUTOFF | The number of genes for which the median deduped read depth across all loci spanned for each gene is > 20. | Count | ≤ 1               |

## Metrics Output

File name: MetricsOutput.tsv

The metrics output is a tab-delimited file that provides quality control information for patient samples that were included in the run.

The metrics output file contains the following sections and their associated fields:

- ▶ **Header**—Contains general information about the file and the run.

| Field            | Description   |
|------------------|---|
| Output Date      | Date this file was created.                           |
| Output Time      | Time this file was created.                           |
| Workflow Version | The version of the analysis pipeline/workflow.        |
| Module Version   | The version of the TSO Comprehensive analysis module. |
| Run ID           | The ID of the sequencing run.                         |
| Run Name         | The name of the sequencing run.                       |

- ▶ **Run QC Metrics**—Contains quality control information for the sequencing run. This section corresponds to the Run QC status in the TSO Comprehensive report and contains one row per QC metric that contributes to Run QC status. All QC metrics in this section must pass for Run QC to pass. See [Run Quality Control on page 7](#) for analysis details. See [Quality Control Metrics on page 40](#) for metric descriptions and thresholds.

| Column       | Description   |
|--------------|---|
| Metric (UOM) | QC metric name and unit of measurement.   |
| LSL          | Lower specification limit (inclusive).  |
| USL          | Upper specification limit (inclusive).  |
| Value        | QC metric value.  |
| PASS/FAIL    | Indicates whether the sample passed or failed the quality control metric. Possible values include PASS, FAIL or NA. |

- ▶ **Analysis Status**—Contains information on whether analysis completed for each patient sample, and whether any samples failed due to a software error. Each column in this section corresponds to a patient sample (Sample ID is used for the column name).

| Field               | Description   |
|---------------------|---|
| COMPLETED_ALL_STEPS | Indicates whether the sample completed all steps of the analysis. Possible values include TRUE and FALSE. If the value is FALSE, contact Illumina technical support for more information. |
| FAILED_STEPS        | A list of any failed analysis steps due to a software error. Contact Illumina technical support for more information if any step is listed here.  |
| STEPS_NOT_EXECUTED  | A list of any analysis steps not executed due to a software error. Contact Illumina technical support for more information if any step is listed here.                                    |

- ▶ **QC Metrics Sections for Patient Samples**—A section is included for each type of quality control used for patient samples. The following table notes where a quality control status in the TSO Comprehensive report corresponds to a section.

| Section  | Description  | Corresponding QC Category in TSO Comprehensive Report |
|--|--|---|
| DNA Library QC Metrics                                   | QC metrics used as validity criteria for DNA sample libraries. See <i>Quality Control for DNA Sample Libraries</i> on page 10 for analysis details. See <i>Quality Control Metrics</i> on page 40 for metric descriptions and thresholds.  | DNA Library QC  |
| DNA Library QC Metrics for Small Variant Calling and TMB | QC metrics used as validity criteria for small variants and TMB in a DNA sample library. See <i>Quality Control for DNA Sample Libraries</i> on page 10 for analysis details. See <i>Quality Control Metrics</i> on page 40 for metric descriptions and thresholds.              | DNA Small Variant & TMB QC                            |
| DNA Library QC Metrics for MSI                           | QC metrics used as validity criteria for MSI in a DNA sample library. See <i>Quality Control for DNA Sample Libraries</i> on page 10 for analysis details. See <i>Quality Control Metrics</i> on page 40 for metric descriptions and thresholds.                                 | DNA MSI QC  |
| DNA Library QC Metrics for CNV                           | QC metrics used as validity criteria for gene amplifications in a DNA sample library. See <i>Quality Control for DNA Sample Libraries</i> on page 10 for analysis details. See <i>Quality Control Metrics</i> on page 40 for metric descriptions and thresholds.                 | DNA Copy Number Variant QC                            |
| DNA Expanded Metrics                                     | DNA Expanded Metrics are for information only and do not directly indicate the quality of DNA libraries. See <i>Quality Control for DNA Sample Libraries</i> on page 10 for analysis details. See <i>DNA Expanded Metrics</i> on page 41 for metric descriptions.                | N/A   |
| RNA Library QC Metrics                                   | QC metrics used as validity criteria for RNA sample libraries. See <i>Quality Control for RNA Sample Libraries</i> on page 13 for analysis details. See <i>Quality Control Metrics</i> on page 40 for metric descriptions and thresholds.  | RNA Library QC  |
| RNA Expanded Metrics                                     | RNA Expanded Metrics are for information only and do not directly indicate the quality of DNA libraries. See <i>Quality Control for RNA Sample Libraries</i> on page 13 for analysis details. See <i>RNA Expanded Metrics</i> on page 42 for metric descriptions and thresholds. | N/A   |

Each section contains the following columns:

- ▶ Metric (UOM)—The QC metric name and unit of measurement.
- ▶ LSL—Lower specification limit (inclusive).
- ▶ USL—Upper specification limit (inclusive).

- ▶ One column per sample (named with Sample ID).

Each section contains the following rows:

- ▶ One row per QC metric.
- ▶ PASS/FAIL—Indicates whether the sample passed or failed for the type of quality control. A status of PASS indicates that the sample values for the metrics are within LSL and USL range. A status of FAIL indicates that sample values for one or more of the metrics are outside of the LSL or USL range. This row is not included for DNA Expanded Metrics or RNA Expanded Metrics.

- ▶ **Notes**—Contains a list of notes describing the content of the file.

## Low Depth Report

File name: {SAMPLE\_ID}\_LowDepthReport.tsv

The low depth report is a tab-delimited file created for each patient sample that includes a listing of genomic position ranges with a total sequencing depth <100 and for which a passing variant was not detected. These positions have insufficient sequencing depth to rule out the presence of a small variant. Positions on the block list are excluded from the report.

The low depth report is not regenerated during Report Regeneration.

The low depth report contains the following sections and their associated fields:

- ▶ **Header**—Contains general information about the file and the run.

| Field                         | Description   |
|-------------------------------|---|
| Sample ID                     | Sample ID of the patient sample.  |
| Tumor Type                    | Tumor type of the patient sample.   |
| Report Date                   | The date the low depth report was generated.  |
| Run ID                        | The ID of the sequencing run.   |
| Run Date                      | The date of the sequencing run.   |
| Knowledge base version        | The version of the KB that was installed when the low depth report was generated.       |
| Knowledge base published date | The date associated with KB that was installed when the low depth report was generated. |
| LRM Module version            | The version of the TSO Comprehensive analysis module.                                   |

- ▶ **Genomic Range List**—Contains a list of genomic position ranges with low depth. Contiguous genomic positions with low depth overlapping the same gene(s) are combined into a single row.

| Column | Description   |
|--------|---|
| Chrom  | Chromosome .  |
| Start  | Start position (hg19).  |
| End    | End position (hg19).  |
| Gene   | Gene symbol(s) overlapping the genomic range based on the RefSeq database included in the KB. |

## Output Folder Structure

This section describes the content of each output folder generated during analysis.

- ▶ IVD
  - ▶ IVD\_Reports
    - ▶ {SampleID}\_TSOCompEUModule\_KB{version}\_Report.pdf—TSO Comprehensive report (PDF format) per patient sample

- ▶ {SampleID}\_TSOCompEUModule\_KB{version}\_Report.json—TSO Comprehensive report (JSON format) per patient sample
  - ▶ {SampleID}\_LowDepthReport.tsv—Low depth report per patient sample
  - ▶ MetricsOutput.tsv—Metrics output
  - ▶ ControlOutput.tsv—Control output report
- ▶ **Logs\_Intermediates**—Logs and intermediate files generated during the analysis pipeline/workflow. Intermediate files are intended to help with troubleshooting only. The information contained in the intermediate files is not intended to be used for clinical reporting or patient management. Performance of any variants identified in these files, other than validated variants, has not been demonstrated. Validated variants are variants with demonstrated performance characteristics. Each folder represents one step of the analysis workflow/pipeline. The TSO Comprehensive analysis module appends RNA or DNA to the Sample ID folder names during processing.

## View Analysis Results

- 1 From the Local Run Manager dashboard, select the run name.
- 2 From the Run Overview tab, review the sequencing run metrics.
- 3 To change the analysis data file location for future requeues of the selected run, select **Edit**, and then edit the output run folder file path.  
The output run folder name cannot be changed.
- 4 **[Optional]** Select **Copy to Clipboard** for access to the output run folder.
- 5 Select the Sequencing Information tab to review run parameters and consumables information.
- 6 Select the Samples & Results tab to view reports and quality control information.
  - ▶ If analysis was repeated, expand the Select Analysis drop-down list and select the appropriate analysis.
- 7 **[Optional]** Select **Copy to Clipboard** to copy the Analysis folder file path.

For more information on the Run Overview and Sequencing Information tabs, and how to requeue analysis, see *NextSeq 550Dx Instrument Reference Guide (document # 1000000009513)*.

## Samples & Results

The Samples & Results screen displays the analysis results associated with the selected run and provides the option to reanalyze the run with different parameters. A table at the top of the screen provides the start date of the currently selected analysis run and the type of run (initial analysis, analysis requeue, or report regeneration).

### Run Level Metrics

The *Run Level Metrics* section of the Samples & Results screen displays a run QC metric status of PASS or FAIL for each Run QC metric. Run QC metric statuses are sourced from the MetricsReport.tsv file (see *Metrics Output on page 31*). See *Quality Control Metrics on page 40* for metric descriptions and thresholds.

### Control Samples

Control samples are designated in the Run Setup screen of Local Run Manager. Results for samples designated as controls are displayed in the *Controls* section of the Samples & Results screen. The Controls section displays the following columns for each sample designated as a control:

- ▶ **Sample ID**
- ▶ **Type**— Control sample type. Possible values are DNA External Control, DNA No-Template Control, RNA External Control, and RNA No-Template Control. Available control sample types remain the same and are not affected by the knowledge base installed.
- ▶ **Analysis Complete?**— Possible values are TRUE and FALSE. Control samples marked as TRUE in the Analysis Complete? column have completed control sample analysis. If a control sample is marked FALSE, a software error has occurred. Contact Illumina technical support for more information.
- ▶ **Outcome**— Possible values are PASS and FAIL. See the following table for outcome value interpretation:

| Control sample type | Outcome | Interpretation   |
|---------------------|---------|--|
| DNA No-Template     | PASS    | Cross-contamination between libraries is not indicated.  |
|                     | FAIL    | Cross-contamination between libraries is indicated. DNA samples in the library preparation event and all associated sequencing runs are invalid. |
| RNA No-Template     | PASS    | Cross-contamination between libraries is not indicated.  |
|                     | FAIL    | Cross-contamination between libraries is indicated. RNA samples in the library preparation event and all associated sequencing runs are invalid. |
| DNA External        | PASS    | Expected variants have been detected.  |
|                     | FAIL    | Variant calling specifications have not been met and DNA samples in the sequencing run are invalid.  |
| RNA External        | PASS    | Expected variants have been detected.  |
|                     | FAIL    | Variant calling specifications have not been met and RNA samples in the sequencing run are invalid.  |

## Sample Level Metrics

The Sample Level Metrics section of the Samples & Results screen displays quality control information for patient samples that were included in the run. Patient sample quality control results are sourced from the **MetricsReport.tsv** file (see *Metrics Output on page 31*). The Sample Level Metrics section displays the following columns for each patient sample:

- ▶ **Sample**—The sample ID.
- ▶ **Analysis Complete?**— Possible values are TRUE and FALSE. Samples marked as TRUE in the Analysis Complete? column have completed analysis successfully. If a sample is marked FALSE in this column, a software error has occurred. Contact Illumina technical support for more information.
- ▶ **DNA Library QC**— Possible values are PASS and FAIL. Indicates whether the sample passed or failed DNA library QC, which applies to the DNA library that was sequenced. Corresponds to DNA Library QC in the TSO Comprehensive report. A dash (–) is shown if a DNA library was not sequenced, or Run QC has a value of FAIL.
- ▶ **DNA Variants and Biomarkers**
  - ▶ **Small Variants and TMB**— Possible values are PASS and FAIL. Indicates whether the sample passed or failed QC for small variants and TMB in the DNA library. Corresponds to DNA Small Variant and TMB QC in the TSO Comprehensive report. A dash (–) is shown if a DNA library was not sequenced, Run QC has a value of FAIL, or DNA Library QC has a value of FAIL
  - ▶ **MSI**— Possible value are PASS and FAIL. Indicates whether the sample passed or failed QC for MSI in the DNA library. Corresponds to DNA MSI QC in the TSO Comprehensive report. A dash (–) is shown if a DNA library was not sequenced, Run QC has a value of FAIL, or DNA Library QC has a value of FAIL

- ▶ **CNV**—Possible values are PASS and FAIL. Indicates whether the sample passed or failed QC for gene amplifications in the DNA library. Corresponds to DNA Copy Number Variant QC in the TSO Comprehensive report. A dash (–) is shown if a DNA library was not sequenced, Run QC has a value of FAIL, or DNA Library QC has a value of FAIL.
- ▶ **RNA Library QC**—Possible values are PASS and FAIL. Indicates whether the sample passed or failed RNA library QC, which applies to the RNA library that was sequenced. Corresponds to RNA Library QC in the TSO Comprehensive report. A dash (–) is shown if an RNA library was not sequenced, or Run QC has a value of FAIL.

Individual samples can fail, even when run metrics pass.

## Report Regeneration

Report regeneration allows one or more reports to be regenerated without repeating all secondary analysis steps. Report regeneration is much faster than a full analysis requeue but has different features:

- ▶ **Scope** —Report regeneration rebuilds the TSO Comprehensive report but skips some analysis steps. You can change the sex or tumor type for one or more samples or install a new KB to produce a new report reflecting these changes. Each sample must be manually selected for report regeneration, while an analysis requeue automatically selects all samples by default. Individual samples can be removed for analysis requeue.
- ▶ **Analysis run failure**—Report regeneration requires a successful analysis run as input, while analysis requeue can be used in scenarios where analysis has failed.
- ▶ **Editable fields**—Report regeneration allows changes to the Sex and Tumor Type fields, while analysis requeue allows any of the fields selected during run setup to be changed.
- ▶ **TSO Comprehensive analysis module version**—Report regeneration requires a successful analysis from Local Run Manager TruSight Oncology Comprehensive Analysis Module v2.3 or later. An analysis requeue can be initiated using analysis from any previous version of TSO Comprehensive analysis module.
- ▶ **Run Input Settings**—Report regeneration run inputs are automatically set to the values from the most recent successful secondary analysis run. The run inputs for an analysis requeue are automatically set to the values from the most recent analysis attempt (including failed analysis runs).

This feature is only accessible to LRM admin users or a non-admin user with requeue analysis permissions assigned. For more information on LRM user management, refer to *NextSeq 550Dx Instrument Reference Guide (document # 1000000009513)*.

## Regenerate a Report or Requeue Analysis

- 1 From the run dashboard, locate a run with a status of Analysis Completed. Select the vertical ellipses icon and select **Requeue**.  
Relinking runs that have been deleted from the local temp folder is required to requeue analysis. For more information on LRM user management, refer to *NextSeq 550Dx Instrument Reference Guide (document # 1000000009513)*.
- 2 Select **Edit Setup** in the Requeue Analysis pop-up.
- 3 Use the dropdown at the top of the Requeue Analysis screen to select report regeneration or full analysis requeue.

**NOTE** Always review run inputs for each sample before saving a run. Report regeneration run inputs are automatically set to the values from the most recent successful secondary analysis run.

- 4 Samples from the previously completed run will be displayed in a table. Use the + buttons on the right of the table to mark desired samples for report regeneration. All samples in a run are excluded from report regeneration by default and must be added individually. Report regeneration is not available for samples originally analyzed as control samples, which require full analysis requeue.
- 5 When all desired samples have been marked for report regeneration, select **Requeue Analysis**.

## Viewing Report Regeneration Results

Regenerated reports for samples marked for report regeneration can be viewed along with other completed analyses in the Samples and Runs screen in Local Run Manager. Reports produced using report regeneration are marked as Report Regeneration in the Analysis Type field at the top of the Samples and Runs screen.

## Troubleshooting

When the sample report indicates that the analysis for the sample failed due to a software error, troubleshoot the issue based on the specific failed step. In the IVD\_Reports folder, the **MetricsOutput.tsv** indicates the specific analysis step that did not complete under FAILED\_STEPS.

Use the following table to troubleshoot issues in the workflow.

| Failed Step     | Recommended Action   |
|-----------------|--|
| FastqValidation | If the software error is due to the FastqValidation step, then one possible cause is an incorrect or nonexistent index resulting in no reads for the sample. If an incorrect index is suspected, then analysis should be repeated with the correct index identifier selected. Otherwise, the sample should be repeated through the TSO Comprehensive workflow with a new extraction of nucleic acid in accordance with the TruSight Oncology Comprehensive (EU) Package Insert (document # 200007789). |
| FusionCalling   | If the software error is due to the FusionCalling step, then the possible causes are a poor-quality sample (insufficient intact RNA), insufficient input of RNA, a use error during the TSO Comprehensive workflow, or an incorrect index assigned to the sample. The sample should be repeated through the TSO Comprehensive workflow with a new extraction of nucleic acid in accordance with the TruSight Oncology Comprehensive (EU) Package Insert (document # 200007789).                        |

For any other steps that are indicated as failed, contact Illumina Technical Support.



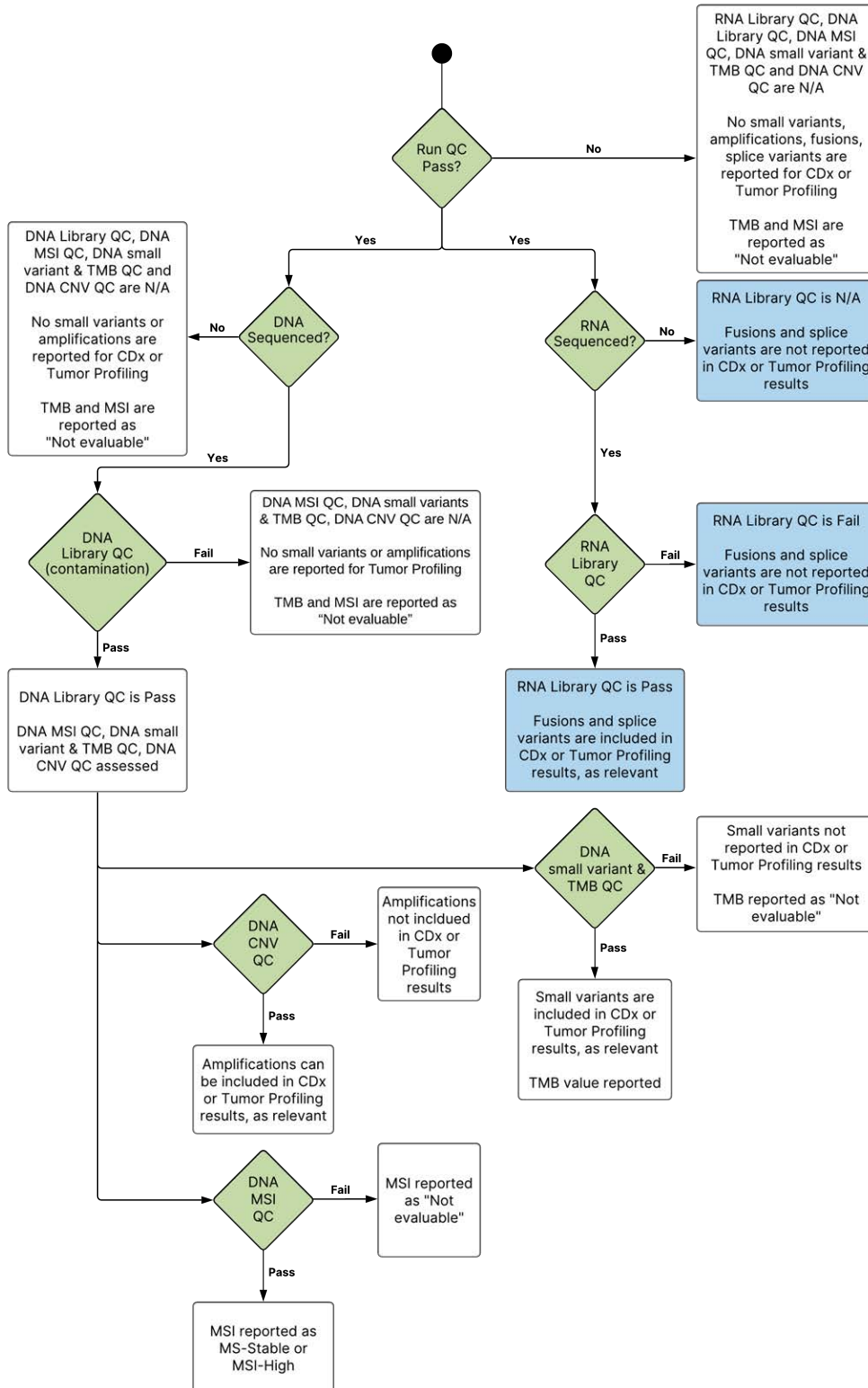
## Appendix A QC Metrics Flowchart

The following flowchart describes the QC metrics that are listed on the TSO Comprehensive report. If Run QC fails, then no other QC steps are assessed, and all are marked as N/A. If DNA or RNA are not sequenced or fail Library QC, then any corresponding variant types are not included in Companion Diagnostic or Tumor Profiling results. DNA Library QC is a measure of contamination. If it does not pass, then the downstream DNA QC Metrics (DNA MSI QC, DNA small variants & TMB QC, and DNA CNV QC) are marked as N/A. For more information, refer to the following sections and tables:

- ▶ *Analysis Methods on page 7*
- ▶ *Quality Control table on page 17*
- ▶ *Run QC Metrics table on page 31*
- ▶ *Quality Control for DNA Sample Libraries on page 10*
- ▶ *Sample Level Metrics on page 35*
- ▶ *Appendix B QC Metrics on page 40*

The flowchart does not map the control samples. The results from the control samples do not impact the QC metrics on the TSO Comprehensive PDF or JSON report. The use of control samples is described in *Control Samples on page 5*. For additional control samples information, see the TruSight Oncology Comprehensive (EU) Package Insert (document # 200007789).

The flowchart does not map the position-level QC results. These results are part of the Companion Diagnostic QC results, which are described in the Companion Diagnostic QC table *on page 21*. Position-level QC results for the Tumor Profiling section are provided in the Low Depth Report, which is described in *Low Depth Reporting for DNA Sample Libraries on page 11*.



## Appendix B QC Metrics

### Quality Control Metrics

Table 5 TSO Comprehensive Report Result QC Metrics

| Output Type    | Metric                              | Specification                        | Description  | Impact of Specification Failure*   |
|----------------|-------------------------------------|--------------------------------------|--|--|
| Sequencing Run | PCT_PF_READS (%)                    | ≥ 80.0                               | Percentage of reads passing filter (PF).   | Sequencing run invalidated, no results reported for any sample in the run. |
|                | PCT_Q30_R1 (%)                      | ≥ 80.0                               | Average percent of base calls with quality score of Q30 or higher for Read 1.  |  |
|                | PCT_Q30_R2 (%)                      | ≥ 80.0                               | Average percent of base calls with quality score of Q30 or higher for Read 2.  |  |
| DNA Libraries  | CONTAMINATION_SCORE                 | ≤ 3106 OR > 3106 and P_VALUE ≤ 0.049 | A metric assessing the likelihood of contamination using the VAF of common variants. The contamination score is based on VAF distribution of SNPs. The contamination P value used to assess highly rearranged genomes, only applicable when contamination score is above Upper Spec Limit. | No DNA results reported.   |
|                | MEDIAN_INSERT_SIZE (bp)             | ≥ 70                                 | The median fragment length in the sample.  | No TMB or small DNA variant results reported.                              |
|                | MEDIAN_EXON_COVERAGE (count)        | ≥ 150                                | Median exon fragment coverage across all exon bases.   |  |
|                | PCT_EXON_50X (%)                    | ≥ 90.0                               | Percent exon bases with 50X fragment coverage.   |  |
|                | USABLE_MSI_SITES (count)            | ≥ 40                                 | The number of MSI sites usable for MSI calling (Number of microsatellite sites with sufficient spanning reads to identify microsatellite instability).   | No MSI results reported.   |
|                | COVERAGE_MAD (count)                | ≤ 0.210                              | The median of absolute deviations from the median of the normalized count of each CNV target region.   | No gene amplification results reported.                                    |
|                | MEDIAN_BIN_COUNT_CNV_TARGET (count) | ≥ 1.0                                | The median raw bin count per CNV target.   |  |

| Output Type   | Metric                            | Specification | Description  | Impact of Specification Failure*               |
|---------------|-----------------------------------|---------------|--|--|
| RNA Libraries | MEDIAN_INSERT_SIZE (bp)           | ≥ 80          | The median fragment length in the sample.  | No fusions or splice variant results reported. |
|               | MEDIAN_CV_GENE_500X (coefficient) | ≤ 0.93        | MEDIAN_CV_GENE_500X is a measure of coverage uniformity. For each gene with at least 500x coverage, the coefficient of variation in coverage across the gene body is computed. This metric is the median of these values. A high value indicates a high level of variation and indicates a problem in library preparation such as low sample input and/or probe pulldown issues. This metric is computed using all reads (including reads marked as duplicates). |  |
|               | TOTAL_ON_TARGET_READS (count)     | ≥ 9,000,000   | The total number of reads that map to the target regions. This metric is computed using all reads (including reads marked as duplicates).  |  |

\*Successful results show PASS.

## DNA Expanded Metrics

DNA expanded metrics are provided for information only. They can be informative for troubleshooting but are provided without explicit specification limits and are not directly used for sample quality control. For additional guidance, contact Illumina Technical Support.

| Metric                 | Description   | Units |
|------------------------|---|-------|
| TOTAL_PF_READS         | Total reads passing filter  | Count |
| MEAN_FAMILY_SIZE       | The sum of the reads in each family divided by the number of families after correction, collapsing, and filtering on supporting reads | Count |
| MEDIAN_TARGET_COVERAGE | The median coverage of bases  | Count |
| PCT_CHIMERIC_READS     | Percent of chimeric reads   | %     |
| PCT_EXON_100X          | Percent of exon bases with greater than 100X coverage   | %     |
| PCT_READ_ENRICHMENT    | Percentage of reads that cross any part of the target region vs total reads   | %     |
| PCT_USABLE_UMI_READS   | The percentage of reads with usable UMIs.   | %     |
| MEAN_TARGET_COVERAGE   | The mean coverage of bases  | Count |
| PCT_ALIGNED_READS      | Percent of reads that aligned to the reference genome.  | %     |

| Metric                        | Description  | Units |
|-------------------------------|--|-------|
| PCT_<br>CONTAMINATION_<br>EST | Percent of contamination of the sample                                   | %     |
| PCT_PF_UQ_<br>READS           | Percent unique reads passing filter                                      | %     |
| PCT_TARGET_<br>0.4X_MEAN      | Percent target bases with target coverage greater than .4 times the mean | %     |
| PCT_TARGET_100X               | Percent target bases with greater than 100X coverage                     | %     |
| PCT_TARGET_250X               | Percent target bases with greater than 250X coverage                     | %     |

## RNA Expanded Metrics

RNA expanded metrics are provided for information only. They can be informative for troubleshooting but are provided without explicit specification limits and are not directly used for sample quality control. For additional guidance, contact Illumina Technical Support.

| Metric                          | Description   | Units |
|---------------------------------|---|-------|
| PCT_CHIMERIC_<br>READS          | Percentage of reads that are aligned as two segments which map to non-consecutive regions in the genome   | %     |
| PCT_ON_TARGET_<br>READS         | Percentage of reads that cross any part of the target region vs total reads. A read that partially maps to a target region is counted as on target. | %     |
| SCALED_MEDIAN_<br>GENE_COVERAGE | Median of median base coverage of genes scaled by length. An indication of median coverage depth of genes in the panel.                             | Count |
| TOTAL_PF_READS                  | Total number of reads passing filter  | Count |

## Appendix C TruSight Oncology Comprehensive (EU) Report Reference

**illumina** | TruSight™ Oncology Comprehensive (EU) **FOR IN VITRO DIAGNOSTIC USE** Report Date 2022-04-06

Sample ID: **Sample A** Run QC: **A** ✓ PASS Run ID: 190426\_NDX550142\_0014\_AH3VGHWDXX  
Tumor Type: Medullary thyroid carcinoma RNA Library QC: ✓ PASS Analysis Date: 2022-04-06  
Sex: Female DNA Library QC: ✓ PASS Knowledge Base Version: 6.8.0.0  
L DNA MSI QC: ✓ PASS Knowledge Date Published Date: 2021-12-23  
L DNA Small Variant & TMB QC: ✓ PASS Module Version: 2.3.6.1113  
L DNA Copy Number Variant QC: ✓ PASS Claims Package Version: 2.1.0.2

**Companion Diagnostic Results \*** **B**

| Detected Variant/Biomarkers       | Therapy                   | Usage     | Details   |
|-----------------------------------|---------------------------|-----------|---|
| <b>LMNA-NTRK1 Fusion</b> <b>C</b> | VITRAKVI® (larotrectinib) | Indicated | Type: Fusion<br>Breakpoint 1: chr1:156100562   Breakpoint 2: chr1:156844699   Fusion Supporting Reads: 64 |

For details about the Companion Diagnostics claims that were evaluated for this sample, see the Companion Diagnostics Intended Uses Evaluated table.

**Other Alterations and Biomarkers Identified** **D**

The genomic findings reported below, for variants or biomarkers identified in this sample, are intended to provide tumor profiling information in accordance with professional guidelines.

**Genomic Findings with Evidence of Clinical Significance +** **E**

No Detected Variants

**Genomic Findings with Potential Clinical Significance \*** **F**

TMB: 3.1 Mut/Mb **G** MSI: MS-Stable

| Detected Variants                  | Details   |
|------------------------------------|---|
| <b>APC p.(Arg1450Ter)</b>          | Type: SNV<br>VAF: 11.39%   Consequence: Stop Gained   Nucleotide Change: NM_000039.5:c.4348C>T   Genomic Position: chr5:112175639   Reference Allele: C   Alternate Allele: T     |
| <b>BRAF p.(Val600Glu)</b> <b>H</b> | Type: SNV<br>VAF: 5.17%   Consequence: Missense Variant   Nucleotide Change: NM_004333.4:c.1799T>A   Genomic Position: chr7:140453136   Reference Allele: A   Alternate Allele: T |

\*Additional information in Informatics Details section **1 of 6**

- A See [Appendix A QC Metrics Flowchart](#) on page 38 for details.
- B A CDx result indicates that the patient sample has a tumor type and biomarker that is targeted by the indicated therapy. For details, see [Companion Diagnostic Calling](#) on page 13. If there are no CDx results, the report states that no Companion Diagnostic biomarkers for the stated sample tumor type were detected.
- C The CDx biomarker observed in patient sample. Usage can be Indicated or See Note. If applicable, a note in the Details column provides additional information about the variant, such as information about possible drug resistance.
- D The Other Alterations and Biomarkers Identified section contains tumor profiling information. Associations can be due to therapeutic, diagnostic, or prognostic evidence. If applicable, this section also lists resistance mutations with a corresponding note.
- E According to the KB, there is evidence of clinical significance for this biomarker in this tumor type based on information from therapy, clinical guidelines, or both. For more information, see [Genomic Findings with Evidence of Clinical Significance](#) on page 14 and the Genomic Findings with Evidence of Clinical Significance table on page 20.
- F According to the KB, there is limited or no clinical evidence for a genomic finding within the tumor type. There might be preclinical data or data in other tumor types where the biomarker is predictive of response to an approved or investigational therapy. For more information, see and the [Genomic Findings with Potential Clinical Significance](#) on page 15 and the Genomic Findings with Potential Clinical Significance table on page 21
- G TMB and MSI are listed in Genomic Findings with Potential Clinical Significance. See [Tumor Mutational Burden](#) on page 10 and [Microsatellite Instability Status](#) on page 10.
- H If there are two variants listed in a single row (not pictured), there is clinical meaning for these variants when they are detected together. Resistance mutations or other sources can be the cause. See examples in [Tumor Profiling of Variants](#) on page 14.

illumina | TruSight<sup>™</sup> Oncology Comprehensive (EU)      Sample ID: Sample A      Tumor Type: Metastatic thyroid carcinoma      Module version: 2.3.6.113      Knowledge base version: 6.8.0.0      Report date: 2022-04-06

● **Companion Diagnostics QC** **A**

**Companion Diagnostics Genomic Positions with Insufficient Coverage for Small Variant Detection**

The positions listed below did not have sufficient coverage for detecting small variants for the listed Companion Diagnostic intended uses. Only Companion Diagnostic intended uses that were evaluated will be listed.

None

● **Companion Diagnostics Intended Uses Evaluated** **B**

The table below includes a column that indicates whether that Companion Diagnostic intended use was evaluated for this sample. If an intended use was not evaluated, a reason is listed. The columns shaded in gray below indicate the information that is sample-specific.

| Tumor Type  | Biomarkers                        | Therapy                   | CDx Intended Use Evaluated | Comment |
|-------------|-----------------------------------|---------------------------|----------------------------|---------|
| Solid Tumor | NTRK1, NTRK2 & NTRK3 Gene Fusions | VITRAKVI® (larotrectinib) | Yes <b>C</b>               | —       |

2 of 6

- A The Companion Diagnostic QC section provides position-level QC information about CDx biomarkers. If no positions are listed, it means that there was sufficient coverage throughout the targeted variants and region. For more information, see the Companion Diagnostics QC table on page 21.
- B The Companion Diagnostics Intended Uses Evaluated section lists all CDx intended uses and indicates whether they were evaluated in this sample. Refer to TruSight Oncology Comprehensive (EU) Package Insert (document # 200007789) for more information about the TSO Comprehensive assay intended use. Tumor type, Biomarker, and Therapy are from the Intended Use statement.
- C Evaluation occurs if the tumor type is appropriate for a CDx and the sample passed required QC categories. For more on information on criteria required for samples to be evaluated for a CDx, refer the Companion Diagnostics Intended Uses Evaluated table on page 22.
- ▶ **Yes**—The sample was evaluated for this intended use. Specific results would be identified in the Companion Diagnostics Results section of the report.
  - ▶ **No**—The sample was not evaluated for this intended use and a comment explains why.

## Appendix D MNVs, Indels, and Deletions in EGFR and RET Detectable by Phased Variant Caller

| Chromosome | Position (hg19) | Reference Allele      | Alternate Allele | Gene | Amino Acid Change                         |
|------------|-----------------|-----------------------|------------------|------|---|
| chr7       | 55242462        | CAAGGAATTAAGAGAA      | C                | EGFR | NP_005219.2:p.(Lys745_Glu749del)          |
| chr7       | 55242463        | AAGGAATTAAGAGAAG      | A                | EGFR | NP_005219.2:p.(Lys745_Ala750delinsThr)    |
| chr7       | 55242464        | AGGAATTAAGAGA         | A                | EGFR | NP_005219.2:p.(Glu746_Glu749del)          |
| chr7       | 55242464        | AGGAATTAAGAGAAGC      | A                | EGFR | NP_005219.2:p.(Glu746_Ala750del)          |
| chr7       | 55242465        | GGAATTAAGA            | G                | EGFR | NP_005219.2:p.(Leu747_Glu749del)          |
| chr7       | 55242465        | GGAATTAAGAGAAG        | AATTC            | EGFR | NP_005219.2:p.(Glu746_Ala750delinsIlePro) |
| chr7       | 55242465        | GGAATTAAGAGAAGCAA     | AATTC            | EGFR | NP_005219.2:p.(Glu746_Thr751delinsIlePro) |
| chr7       | 55242465        | GGAATTAAGAGAAGCAAC    | AAT              | EGFR | NP_005219.2:p.(Glu746_Thr751delinsIle)    |
| chr7       | 55242465        | GGAATTAAGAGAAGCAACA   | G                | EGFR | NP_005219.2:p.(Glu746_Thr751del)          |
| chr7       | 55242465        | GGAATTAAGAGAAGCAACATC | AAT              | EGFR | NP_005219.2:p.(Glu746_Ser752delinsIle)    |
| chr7       | 55242465        | GGAATTAAGAGAAGCA      | G                | EGFR | NP_005219.2:p.(Glu746_Ala750del)          |
| chr7       | 55242466        | GAATTAAGAGAAGCAACAT   | G                | EGFR | NP_005219.2:p.(Glu746_Ser752delinsAla)    |
| chr7       | 55242466        | GAATTAAGAGAAGCAA      | G                | EGFR | NP_005219.2:p.(Glu746_Thr751delinsAla)    |
| chr7       | 55242467        | AATTAAGAGAAGCAAC      | A                | EGFR | NP_005219.2:p.(Leu747_Thr751del)          |
| chr7       | 55242467        | AATTAAGAGAAGCAACATC   | A                | EGFR | NP_005219.2:p.(Glu746_Ser752delinsAsp)    |
| chr7       | 55242467        | AATTAAGAGAAGCAACATC   | T                | EGFR | NP_005219.2:p.(Glu746_Ser752delinsVal)    |
| chr7       | 55242467        | AATTAAGAGAAGCAACATCTC | TCT              | EGFR | NP_005219.2:p.(Glu746_Pro753delinsValSer) |
| chr7       | 55242467        | AATTAAGAGAAGCAACA     | TTGCT            | EGFR | NP_005219.2:p.(Glu746_Thr751delinsValAla) |
| chr7       | 55242467        | AATTAAGAGAAGCAAC      | T                | EGFR | NP_005219.2:p.(Glu746_Thr751delinsVal)    |
| chr7       | 55242468        | ATTAAGAGAAGCAACATCT   | A                | EGFR | NP_005219.2:p.(Leu747_Ser752del)          |
| chr7       | 55242468        | ATTAAGAGAAGCAAC       | GCA              | EGFR | NP_005219.2:p.(Leu747_Thr751delinsGln)    |
| chr7       | 55242468        | ATTAAGAGAAG           | GC               | EGFR | NP_005219.2:p.(Leu747_Ala750delinsPro)    |
| chr7       | 55242469        | TTAAGAGAAG            | C                | EGFR | NP_005219.2:p.(Leu747_Ala750delinsPro)    |
| chr7       | 55242469        | TTAAGAGAAGCAA         | C                | EGFR | NP_005219.2:p.(Leu747_Thr751delinsPro)    |
| chr7       | 55242469        | TTAAGAGAAGCAACATCT    | CAA              | EGFR | NP_005219.2:p.(Leu747_Ser752delinsGln)    |



| Chromosome | Position (hg19) | Reference Allele               | Alternate Allele | Gene | Amino Acid Change                         |
|------------|-----------------|--------------------------------|------------------|------|---|
| chr7       | 55242469        | TTAAGAGAAGCAACATCTCC           | CA               | EGFR | NP_005219.2:p.(Leu747_Pro753delinsGln)    |
| chr7       | 55242469        | TTAAGAGAAGCAACATCTC            | T                | EGFR | NP_005219.2:p.(Leu747_Pro753delinsSer)    |
| chr7       | 55242469        | TTAAGAGAAGCAA                  | T                | EGFR | NP_005219.2:p.(Leu747_Thr751delinsSer)    |
| chr7       | 55242482        | CATCTCCGAAAGCCAACAAGGAAAT      | C                | EGFR | NP_005219.2:p.(Ser752_Ile759del)          |
| chr7       | 55249011        | AC                             | CCAGCGTGGAT      | EGFR | NP_005219.2:p.(Ala767_Val769dup)          |
| chr10      | 43604549        | CTCAGACTTCCAGGGCCCAGGA         | G                | RET  | NP_066124.1:p.(Asp378_Gly385delinsGlu)    |
| chr10      | 43609928        | ATCCACTGTGCGACGAGCTG           | CACAC            | RET  | NP_066124.1:p.(Asp627_Leu633delinsAlaHis) |
| chr10      | 43609928        | ATCCACTGTGCGACGAGCTG           | CACAT            | RET  | NP_066124.1:p.(Asp627_Leu633delinsAlaHis) |
| chr10      | 43609928        | ATCCACTGTGCGACGAGCTG           | CCCAC            | RET  | NP_066124.1:p.(Asp627_Leu633delinsAlaHis) |
| chr10      | 43609928        | ATCCACTGTGCGACGAGCTG           | CCCAT            | RET  | NP_066124.1:p.(Asp627_Leu633delinsAlaHis) |
| chr10      | 43609928        | ATCCACTGTGCGACGAGCTG           | CGCAC            | RET  | NP_066124.1:p.(Asp627_Leu633delinsAlaHis) |
| chr10      | 43609928        | ATCCACTGTGCGACGAGCTG           | CGCAT            | RET  | NP_066124.1:p.(Asp627_Leu633delinsAlaHis) |
| chr10      | 43609928        | ATCCACTGTGCGACGAGCTG           | CTCAC            | RET  | NP_066124.1:p.(Asp627_Leu633delinsAlaHis) |
| chr10      | 43609928        | ATCCACTGTGCGACGAGCTG           | CTCAT            | RET  | NP_066124.1:p.(Asp627_Leu633delinsAlaHis) |
| chr10      | 43609933        | CTGTGCGACGAGCTGTGCCGCACGGTGATC | TGCGAT           | RET  | NP_066124.1:p.(Leu629_Ile638delinsCysAsp) |
| chr10      | 43609933        | CTGTGCGACGAGCTGTGCCGCACGGTGATC | TGTGAT           | RET  | NP_066124.1:p.(Leu629_Ile638delinsCysAsp) |
| chr10      | 43609933        | CTGTGCGACGAGCTGTGCCGCACGGTGAT  | TGCGA            | RET  | NP_066124.1:p.(Leu629_Ile638delinsCysAsp) |
| chr10      | 43609933        | CTGTGCGACGAGCTGTGCCGCACGGTGAT  | TGTGA            | RET  | NP_066124.1:p.(Leu629_Ile638delinsCysAsp) |
| chr10      | 43609936        | TGC                            | GCT              | RET  | NP_066124.1:p.(Cys630Ala)                 |
| chr10      | 43609940        | ACGAGCTG                       | TA               | RET  | NP_066124.1:p.(Asp631_Leu633delinsVal)    |
| chr10      | 43609940        | ACGAGCTG                       | TC               | RET  | NP_066124.1:p.(Asp631_Leu633delinsVal)    |
| chr10      | 43609940        | ACGAGCTGTGCCGCACGGTGAT         | C                | RET  | NP_066124.1:p.(Asp631_Ile638delinsAla)    |
| chr10      | 43609940        | ACGAGCTGTGCCGCACGGTGATC        | CA               | RET  | NP_066124.1:p.(Asp631_Ile638delinsAla)    |
| chr10      | 43609940        | ACGAGCTGTGCCGCACGGTGATC        | CG               | RET  | NP_066124.1:p.(Asp631_Ile638delinsAla)    |
| chr10      | 43609940        | ACGAGCTGTGCCGCACGGTGATC        | CT               | RET  | NP_066124.1:p.(Asp631_Ile638delinsAla)    |
| chr10      | 43609940        | ACGAGCTG                       | TT               | RET  | NP_066124.1:p.(Asp631_Leu633delinsVal)    |
| chr10      | 43609941        | CGAGCTG                        | A                | RET  | NP_066124.1:p.(Asp631_Leu633delinsGlu)    |
| chr10      | 43609942        | GAGCTGTGCCGCA                  | AGCT             | RET  | NP_066124.1:p.(Glu632_Thr636delinsSerSer) |

| Chromosome | Position (hg19) | Reference Allele         | Alternate Allele | Gene | Amino Acid Change                         |
|------------|-----------------|--------------------------|------------------|------|---|
| chr10      | 43609942        | GAGCTGTGCCGCA            | AGTT             | RET  | NP_066124.1:p.(Glu632_Thr636delinsSerSer) |
| chr10      | 43609942        | GAGCTGTGCCGCACG          | AGCAGC           | RET  | NP_066124.1:p.(Glu632_Thr636delinsSerSer) |
| chr10      | 43609942        | GAGCTGTGCCGCACG          | AGCAGT           | RET  | NP_066124.1:p.(Glu632_Thr636delinsSerSer) |
| chr10      | 43609942        | GAGCTGTGCCGCACG          | AGCTCA           | RET  | NP_066124.1:p.(Glu632_Thr636delinsSerSer) |
| chr10      | 43609942        | GAGCTGTGCCGCACG          | AGCTCC           | RET  | NP_066124.1:p.(Glu632_Thr636delinsSerSer) |
| chr10      | 43609942        | GAGCTGTGCCGCACG          | AGCTCT           | RET  | NP_066124.1:p.(Glu632_Thr636delinsSerSer) |
| chr10      | 43609942        | GAGCTGTGCCGCACG          | AGTAGC           | RET  | NP_066124.1:p.(Glu632_Thr636delinsSerSer) |
| chr10      | 43609942        | GAGCTGTGCCGCACG          | AGTAGT           | RET  | NP_066124.1:p.(Glu632_Thr636delinsSerSer) |
| chr10      | 43609942        | GAGCTGTGCCGCACG          | AGTTCA           | RET  | NP_066124.1:p.(Glu632_Thr636delinsSerSer) |
| chr10      | 43609942        | GAGCTGTGCCGCACG          | AGTTCC           | RET  | NP_066124.1:p.(Glu632_Thr636delinsSerSer) |
| chr10      | 43609942        | GAGCTGTGCCGCACG          | AGTTCT           | RET  | NP_066124.1:p.(Glu632_Thr636delinsSerSer) |
| chr10      | 43609942        | GAGCTGTGCCGCACGGTGATCGCA | CACAGG           | RET  | NP_066124.1:p.(Glu632_Ala639delinsHisArg) |
| chr10      | 43609942        | GAGCTGTGCCGCACGGTGATCGCA | CACCGC           | RET  | NP_066124.1:p.(Glu632_Ala639delinsHisArg) |
| chr10      | 43609942        | GAGCTGTGCCGCACGGTGATCGCA | CACCGG           | RET  | NP_066124.1:p.(Glu632_Ala639delinsHisArg) |
| chr10      | 43609942        | GAGCTGTGCCGCACGGTGATCGCA | CACCGT           | RET  | NP_066124.1:p.(Glu632_Ala639delinsHisArg) |
| chr10      | 43609942        | GAGCTGTGCCGCACGGTGATCGCA | CATAGG           | RET  | NP_066124.1:p.(Glu632_Ala639delinsHisArg) |
| chr10      | 43609942        | GAGCTGTGCCGCACGGTGATCGCA | CATCGC           | RET  | NP_066124.1:p.(Glu632_Ala639delinsHisArg) |
| chr10      | 43609942        | GAGCTGTGCCGCACGGTGATCGCA | CATCGG           | RET  | NP_066124.1:p.(Glu632_Ala639delinsHisArg) |
| chr10      | 43609942        | GAGCTGTGCCGCACGGTGATCGCA | CATCGT           | RET  | NP_066124.1:p.(Glu632_Ala639delinsHisArg) |
| chr10      | 43609942        | GAGCTGTGCCGCACGGTGATCGC  | CACAG            | RET  | NP_066124.1:p.(Glu632_Ala639delinsHisArg) |
| chr10      | 43609942        | GAGCTGTGCCGCACGGTGATCGC  | CACCG            | RET  | NP_066124.1:p.(Glu632_Ala639delinsHisArg) |
| chr10      | 43609942        | GAGCTGTGCCGCACGGTGATCGC  | CATAG            | RET  | NP_066124.1:p.(Glu632_Ala639delinsHisArg) |
| chr10      | 43609942        | GAGCTGTGCCGCACGGTGATCGC  | CATCG            | RET  | NP_066124.1:p.(Glu632_Ala639delinsHisArg) |
| chr10      | 43609942        | GAGCTGTGCCGCACG          | TCAAGC           | RET  | NP_066124.1:p.(Glu632_Thr636delinsSerSer) |
| chr10      | 43609942        | GAGCTGTGCCGCACG          | TCAAGT           | RET  | NP_066124.1:p.(Glu632_Thr636delinsSerSer) |
| chr10      | 43609942        | GAGCTGTGCCGCACG          | TCATCA           | RET  | NP_066124.1:p.(Glu632_Thr636delinsSerSer) |
| chr10      | 43609942        | GAGCTGTGCCGCACG          | TCATCC           | RET  | NP_066124.1:p.(Glu632_Thr636delinsSerSer) |
| chr10      | 43609942        | GAGCTGTGCCGCACG          | TCATCT           | RET  | NP_066124.1:p.(Glu632_Thr636delinsSerSer) |

| Chromosome | Position (hg19) | Reference Allele           | Alternate Allele | Gene | Amino Acid Change                            |
|------------|-----------------|----------------------------|------------------|------|--|
| chr10      | 43609942        | GAGCTGTGCCGCACG            | TCCAGC           | RET  | NP_066124.1:p.(Glu632_Thr636delinsSerSer)    |
| chr10      | 43609942        | GAGCTGTGCCGCACG            | TCCAGT           | RET  | NP_066124.1:p.(Glu632_Thr636delinsSerSer)    |
| chr10      | 43609942        | GAGCTGTGCCGCACG            | TCCTCA           | RET  | NP_066124.1:p.(Glu632_Thr636delinsSerSer)    |
| chr10      | 43609942        | GAGCTGTGCCGCACG            | TCCTCC           | RET  | NP_066124.1:p.(Glu632_Thr636delinsSerSer)    |
| chr10      | 43609942        | GAGCTGTGCCGCACG            | TCCTCT           | RET  | NP_066124.1:p.(Glu632_Thr636delinsSerSer)    |
| chr10      | 43609942        | GAGCTGTGCCGCACG            | TCGAGC           | RET  | NP_066124.1:p.(Glu632_Thr636delinsSerSer)    |
| chr10      | 43609942        | GAGCTGTGCCGCACG            | TCGAGT           | RET  | NP_066124.1:p.(Glu632_Thr636delinsSerSer)    |
| chr10      | 43609942        | GAGCTGTGCCGCACG            | TCGTCA           | RET  | NP_066124.1:p.(Glu632_Thr636delinsSerSer)    |
| chr10      | 43609942        | GAGCTGTGCCGCACG            | TCGTCC           | RET  | NP_066124.1:p.(Glu632_Thr636delinsSerSer)    |
| chr10      | 43609942        | GAGCTGTGCCGCACG            | TCGTCT           | RET  | NP_066124.1:p.(Glu632_Thr636delinsSerSer)    |
| chr10      | 43609942        | GAGCTGTGCCGCACG            | TCTAGC           | RET  | NP_066124.1:p.(Glu632_Thr636delinsSerSer)    |
| chr10      | 43609942        | GAGCTGTGCCGCACG            | TCTAGT           | RET  | NP_066124.1:p.(Glu632_Thr636delinsSerSer)    |
| chr10      | 43609942        | GAGCTGTGCCGCACG            | TCTTCA           | RET  | NP_066124.1:p.(Glu632_Thr636delinsSerSer)    |
| chr10      | 43609942        | GAGCTGTGCCGCACG            | TCTTCC           | RET  | NP_066124.1:p.(Glu632_Thr636delinsSerSer)    |
| chr10      | 43609942        | GAGCTGTGCCGCACG            | TCTTCT           | RET  | NP_066124.1:p.(Glu632_Thr636delinsSerSer)    |
| chr10      | 43609942        | GAGCTGTGCCGCA              | TCAT             | RET  | NP_066124.1:p.(Glu632_Thr636delinsSerSer)    |
| chr10      | 43609942        | GAGCTGTGCCGCA              | TCCT             | RET  | NP_066124.1:p.(Glu632_Thr636delinsSerSer)    |
| chr10      | 43609942        | GAGCTGTGCCGCA              | TCGT             | RET  | NP_066124.1:p.(Glu632_Thr636delinsSerSer)    |
| chr10      | 43609942        | GAGCTGTGCCGCA              | TCTT             | RET  | NP_066124.1:p.(Glu632_Thr636delinsSerSer)    |
| chr10      | 43609943        | AGCTG                      | TA               | RET  | NP_066124.1:p.(Glu632_Leu633delinsVal)       |
| chr10      | 43609943        | AGCTG                      | TC               | RET  | NP_066124.1:p.(Glu632_Leu633delinsVal)       |
| chr10      | 43609943        | AGCTGTGCCGCACGGT           | CAGC             | RET  | NP_066124.1:p.(Glu632_Val637delinsAlaAla)    |
| chr10      | 43609943        | AGCTGTGCCGCACGGT           | CCGC             | RET  | NP_066124.1:p.(Glu632_Val637delinsAlaAla)    |
| chr10      | 43609943        | AGCTGTGCCGCACGGT           | CGGC             | RET  | NP_066124.1:p.(Glu632_Val637delinsAlaAla)    |
| chr10      | 43609943        | AGCTGTGCCGCACGGT           | CTGC             | RET  | NP_066124.1:p.(Glu632_Val637delinsAlaAla)    |
| chr10      | 43609943        | AGCTGTGCCGCACGGTGATCGCAGCC | TAAGACCA         | RET  | NP_066124.1:p.(Glu632_Ala640delinsValArgPro) |
| chr10      | 43609943        | AGCTGTGCCGCACGGTGATCGCAGCC | TAAGACCG         | RET  | NP_066124.1:p.(Glu632_Ala640delinsValArgPro) |
| chr10      | 43609943        | AGCTGTGCCGCACGGTGATCGCAGCC | TAAGACCT         | RET  | NP_066124.1:p.(Glu632_Ala640delinsValArgPro) |

| Chromosome | Position (hg19) | Reference Allele           | Alternate Allele | Gene | Amino Acid Change                            |
|------------|-----------------|----------------------------|------------------|------|--|
| chr10      | 43609943        | AGCTGTGCCGCACGGTGATCGCAGCC | TAAGGCCA         | RET  | NP_066124.1:p.(Glu632_Ala640delinsValArgPro) |
| chr10      | 43609943        | AGCTGTGCCGCACGGTGATCGCAGCC | TAAGGCTT         | RET  | NP_066124.1:p.(Glu632_Ala640delinsValArgPro) |
| chr10      | 43609943        | AGCTGTGCCGCACGGTGATCGCAGCC | TACGACCA         | RET  | NP_066124.1:p.(Glu632_Ala640delinsValArgPro) |
| chr10      | 43609943        | AGCTGTGCCGCACGGTGATCGCAGCC | TACGACCG         | RET  | NP_066124.1:p.(Glu632_Ala640delinsValArgPro) |
| chr10      | 43609943        | AGCTGTGCCGCACGGTGATCGCAGCC | TACGACCT         | RET  | NP_066124.1:p.(Glu632_Ala640delinsValArgPro) |
| chr10      | 43609943        | AGCTGTGCCGCACGGTGATCGCAGCC | TACGCCCA         | RET  | NP_066124.1:p.(Glu632_Ala640delinsValArgPro) |
| chr10      | 43609943        | AGCTGTGCCGCACGGTGATCGCAGCC | TACGCCCG         | RET  | NP_066124.1:p.(Glu632_Ala640delinsValArgPro) |
| chr10      | 43609943        | AGCTGTGCCGCACGGTGATCGCAGCC | TACGCCCT         | RET  | NP_066124.1:p.(Glu632_Ala640delinsValArgPro) |
| chr10      | 43609943        | AGCTGTGCCGCACGGTGATCGCAGCC | TACGGCCA         | RET  | NP_066124.1:p.(Glu632_Ala640delinsValArgPro) |
| chr10      | 43609943        | AGCTGTGCCGCACGGTGATCGCAGCC | TACGGCCG         | RET  | NP_066124.1:p.(Glu632_Ala640delinsValArgPro) |
| chr10      | 43609943        | AGCTGTGCCGCACGGTGATCGCAGCC | TACGGCCT         | RET  | NP_066124.1:p.(Glu632_Ala640delinsValArgPro) |
| chr10      | 43609943        | AGCTGTGCCGCACGGTGATCGCAGCC | TACGTCCA         | RET  | NP_066124.1:p.(Glu632_Ala640delinsValArgPro) |
| chr10      | 43609943        | AGCTGTGCCGCACGGTGATCGCAGCC | TACGTCCG         | RET  | NP_066124.1:p.(Glu632_Ala640delinsValArgPro) |
| chr10      | 43609943        | AGCTGTGCCGCACGGTGATCGCAGCC | TACGTCCT         | RET  | NP_066124.1:p.(Glu632_Ala640delinsValArgPro) |
| chr10      | 43609943        | AGCTGTGCCGCACGGTGATCGCAGCC | TCAGACCA         | RET  | NP_066124.1:p.(Glu632_Ala640delinsValArgPro) |
| chr10      | 43609943        | AGCTGTGCCGCACGGTGATCGCAGCC | TCAGACCG         | RET  | NP_066124.1:p.(Glu632_Ala640delinsValArgPro) |
| chr10      | 43609943        | AGCTGTGCCGCACGGTGATCGCAGCC | TCAGACCT         | RET  | NP_066124.1:p.(Glu632_Ala640delinsValArgPro) |
| chr10      | 43609943        | AGCTGTGCCGCACGGTGATCGCAGCC | TCAGGCCA         | RET  | NP_066124.1:p.(Glu632_Ala640delinsValArgPro) |
| chr10      | 43609943        | AGCTGTGCCGCACGGTGATCGCAGCC | TCAGGCCG         | RET  | NP_066124.1:p.(Glu632_Ala640delinsValArgPro) |
| chr10      | 43609943        | AGCTGTGCCGCACGGTGATCGCAGCC | TCAGGCCT         | RET  | NP_066124.1:p.(Glu632_Ala640delinsValArgPro) |
| chr10      | 43609943        | AGCTGTGCCGCACGGTGATCGCAGCC | TCCGACCA         | RET  | NP_066124.1:p.(Glu632_Ala640delinsValArgPro) |
| chr10      | 43609943        | AGCTGTGCCGCACGGTGATCGCAGCC | TCCGACCG         | RET  | NP_066124.1:p.(Glu632_Ala640delinsValArgPro) |
| chr10      | 43609943        | AGCTGTGCCGCACGGTGATCGCAGCC | TCCGACCT         | RET  | NP_066124.1:p.(Glu632_Ala640delinsValArgPro) |
| chr10      | 43609943        | AGCTGTGCCGCACGGTGATCGCAGCC | TCCGCCCA         | RET  | NP_066124.1:p.(Glu632_Ala640delinsValArgPro) |
| chr10      | 43609943        | AGCTGTGCCGCACGGTGATCGCAGCC | TCCGCCCG         | RET  | NP_066124.1:p.(Glu632_Ala640delinsValArgPro) |
| chr10      | 43609943        | AGCTGTGCCGCACGGTGATCGCAGCC | TCCGCCCT         | RET  | NP_066124.1:p.(Glu632_Ala640delinsValArgPro) |
| chr10      | 43609943        | AGCTGTGCCGCACGGTGATCGCAGCC | TCCGGCCA         | RET  | NP_066124.1:p.(Glu632_Ala640delinsValArgPro) |
| chr10      | 43609943        | AGCTGTGCCGCACGGTGATCGCAGCC | TCCGGCCG         | RET  | NP_066124.1:p.(Glu632_Ala640delinsValArgPro) |

| Chromosome | Position (hg19) | Reference Allele           | Alternate Allele | Gene | Amino Acid Change                            |
|------------|-----------------|----------------------------|------------------|------|--|
| chr10      | 43609943        | AGCTGTGCCGCACGGTGATCGCAGCC | TCCGGCCT         | RET  | NP_066124.1:p.(Glu632_Ala640delinsValArgPro) |
| chr10      | 43609943        | AGCTGTGCCGCACGGTGATCGCAGCC | TCCGTCCA         | RET  | NP_066124.1:p.(Glu632_Ala640delinsValArgPro) |
| chr10      | 43609943        | AGCTGTGCCGCACGGTGATCGCAGCC | TCCGTCCG         | RET  | NP_066124.1:p.(Glu632_Ala640delinsValArgPro) |
| chr10      | 43609943        | AGCTGTGCCGCACGGTGATCGCAGCC | TCCGTCTT         | RET  | NP_066124.1:p.(Glu632_Ala640delinsValArgPro) |
| chr10      | 43609943        | AGCTGTGCCGCACGGTGATCGCAGCC | TGAGACCA         | RET  | NP_066124.1:p.(Glu632_Ala640delinsValArgPro) |
| chr10      | 43609943        | AGCTGTGCCGCACGGTGATCGCAGCC | TGAGACCG         | RET  | NP_066124.1:p.(Glu632_Ala640delinsValArgPro) |
| chr10      | 43609943        | AGCTGTGCCGCACGGTGATCGCAGCC | TGAGACCT         | RET  | NP_066124.1:p.(Glu632_Ala640delinsValArgPro) |
| chr10      | 43609943        | AGCTGTGCCGCACGGTGATCGCAGCC | TGAGGCCA         | RET  | NP_066124.1:p.(Glu632_Ala640delinsValArgPro) |
| chr10      | 43609943        | AGCTGTGCCGCACGGTGATCGCAGCC | TGAGGCCG         | RET  | NP_066124.1:p.(Glu632_Ala640delinsValArgPro) |
| chr10      | 43609943        | AGCTGTGCCGCACGGTGATCGCAGCC | TGAGGCCT         | RET  | NP_066124.1:p.(Glu632_Ala640delinsValArgPro) |
| chr10      | 43609943        | AGCTGTGCCGCACGGTGATCGCAGCC | TGCGACCA         | RET  | NP_066124.1:p.(Glu632_Ala640delinsValArgPro) |
| chr10      | 43609943        | AGCTGTGCCGCACGGTGATCGCAGCC | TGCGACCG         | RET  | NP_066124.1:p.(Glu632_Ala640delinsValArgPro) |
| chr10      | 43609943        | AGCTGTGCCGCACGGTGATCGCAGCC | TGCGACCT         | RET  | NP_066124.1:p.(Glu632_Ala640delinsValArgPro) |
| chr10      | 43609943        | AGCTGTGCCGCACGGTGATCGCAGCC | TGCGCCCA         | RET  | NP_066124.1:p.(Glu632_Ala640delinsValArgPro) |
| chr10      | 43609943        | AGCTGTGCCGCACGGTGATCGCAGCC | TGCGCCCG         | RET  | NP_066124.1:p.(Glu632_Ala640delinsValArgPro) |
| chr10      | 43609943        | AGCTGTGCCGCACGGTGATCGCAGCC | TGCGCCCT         | RET  | NP_066124.1:p.(Glu632_Ala640delinsValArgPro) |
| chr10      | 43609943        | AGCTGTGCCGCACGGTGATCGCAGCC | TGCGGCCA         | RET  | NP_066124.1:p.(Glu632_Ala640delinsValArgPro) |
| chr10      | 43609943        | AGCTGTGCCGCACGGTGATCGCAGCC | TGCGGCCT         | RET  | NP_066124.1:p.(Glu632_Ala640delinsValArgPro) |
| chr10      | 43609943        | AGCTGTGCCGCACGGTGATCGCAGCC | TGCGTCCA         | RET  | NP_066124.1:p.(Glu632_Ala640delinsValArgPro) |
| chr10      | 43609943        | AGCTGTGCCGCACGGTGATCGCAGCC | TGCGTCCG         | RET  | NP_066124.1:p.(Glu632_Ala640delinsValArgPro) |
| chr10      | 43609943        | AGCTGTGCCGCACGGTGATCGCAGCC | TGCGTCTT         | RET  | NP_066124.1:p.(Glu632_Ala640delinsValArgPro) |
| chr10      | 43609943        | AGCTGTGCCGCACGGTGATCGCAGCC | TTAGACCA         | RET  | NP_066124.1:p.(Glu632_Ala640delinsValArgPro) |
| chr10      | 43609943        | AGCTGTGCCGCACGGTGATCGCAGCC | TTAGACCG         | RET  | NP_066124.1:p.(Glu632_Ala640delinsValArgPro) |
| chr10      | 43609943        | AGCTGTGCCGCACGGTGATCGCAGCC | TTAGACCT         | RET  | NP_066124.1:p.(Glu632_Ala640delinsValArgPro) |
| chr10      | 43609943        | AGCTGTGCCGCACGGTGATCGCAGCC | TTAGGCCA         | RET  | NP_066124.1:p.(Glu632_Ala640delinsValArgPro) |
| chr10      | 43609943        | AGCTGTGCCGCACGGTGATCGCAGCC | TTAGGCCG         | RET  | NP_066124.1:p.(Glu632_Ala640delinsValArgPro) |
| chr10      | 43609943        | AGCTGTGCCGCACGGTGATCGCAGCC | TTAGGCCT         | RET  | NP_066124.1:p.(Glu632_Ala640delinsValArgPro) |
| chr10      | 43609943        | AGCTGTGCCGCACGGTGATCGCAGCC | TTCGACCA         | RET  | NP_066124.1:p.(Glu632_Ala640delinsValArgPro) |

| Chromosome | Position (hg19) | Reference Allele           | Alternate Allele | Gene | Amino Acid Change                            |
|------------|-----------------|----------------------------|------------------|------|--|
| chr10      | 43609943        | AGCTGTGCCGCACGGTGATCGCAGCC | TTCGACCG         | RET  | NP_066124.1:p.(Glu632_Ala640delinsValArgPro) |
| chr10      | 43609943        | AGCTGTGCCGCACGGTGATCGCAGCC | TTCGACCT         | RET  | NP_066124.1:p.(Glu632_Ala640delinsValArgPro) |
| chr10      | 43609943        | AGCTGTGCCGCACGGTGATCGCAGCC | TTCGCCCA         | RET  | NP_066124.1:p.(Glu632_Ala640delinsValArgPro) |
| chr10      | 43609943        | AGCTGTGCCGCACGGTGATCGCAGCC | TTCGCCCG         | RET  | NP_066124.1:p.(Glu632_Ala640delinsValArgPro) |
| chr10      | 43609943        | AGCTGTGCCGCACGGTGATCGCAGCC | TTCGCCCT         | RET  | NP_066124.1:p.(Glu632_Ala640delinsValArgPro) |
| chr10      | 43609943        | AGCTGTGCCGCACGGTGATCGCAGCC | TTCGCCCA         | RET  | NP_066124.1:p.(Glu632_Ala640delinsValArgPro) |
| chr10      | 43609943        | AGCTGTGCCGCACGGTGATCGCAGCC | TTCGCCCG         | RET  | NP_066124.1:p.(Glu632_Ala640delinsValArgPro) |
| chr10      | 43609943        | AGCTGTGCCGCACGGTGATCGCAGCC | TTCGCCCT         | RET  | NP_066124.1:p.(Glu632_Ala640delinsValArgPro) |
| chr10      | 43609943        | AGCTGTGCCGCACGGTGATCGCAGCC | TTCGTCCA         | RET  | NP_066124.1:p.(Glu632_Ala640delinsValArgPro) |
| chr10      | 43609943        | AGCTGTGCCGCACGGTGATCGCAGCC | TTCGTCCG         | RET  | NP_066124.1:p.(Glu632_Ala640delinsValArgPro) |
| chr10      | 43609943        | AGCTGTGCCGCACGGTGATCGCAGCC | TTCGTCCT         | RET  | NP_066124.1:p.(Glu632_Ala640delinsValArgPro) |
| chr10      | 43609943        | AGCTGTGCCGCACGGTGATCGCAG   | TAAGAC           | RET  | NP_066124.1:p.(Glu632_Ala640delinsValArgPro) |
| chr10      | 43609943        | AGCTGTGCCGCACGGTGATCGCAG   | TAAGGC           | RET  | NP_066124.1:p.(Glu632_Ala640delinsValArgPro) |
| chr10      | 43609943        | AGCTGTGCCGCACGGTGATCGCAG   | TACGAC           | RET  | NP_066124.1:p.(Glu632_Ala640delinsValArgPro) |
| chr10      | 43609943        | AGCTGTGCCGCACGGTGATCGCAG   | TACGCC           | RET  | NP_066124.1:p.(Glu632_Ala640delinsValArgPro) |
| chr10      | 43609943        | AGCTGTGCCGCACGGTGATCGCAG   | TACGGC           | RET  | NP_066124.1:p.(Glu632_Ala640delinsValArgPro) |
| chr10      | 43609943        | AGCTGTGCCGCACGGTGATCGCAG   | TACGTC           | RET  | NP_066124.1:p.(Glu632_Ala640delinsValArgPro) |
| chr10      | 43609943        | AGCTGTGCCGCACGGTGATCGCAG   | TCAGAC           | RET  | NP_066124.1:p.(Glu632_Ala640delinsValArgPro) |
| chr10      | 43609943        | AGCTGTGCCGCACGGTGATCGCAG   | TCAGGC           | RET  | NP_066124.1:p.(Glu632_Ala640delinsValArgPro) |
| chr10      | 43609943        | AGCTGTGCCGCACGGTGATCGCAG   | TCCGAC           | RET  | NP_066124.1:p.(Glu632_Ala640delinsValArgPro) |
| chr10      | 43609943        | AGCTGTGCCGCACGGTGATCGCAG   | TCCGCC           | RET  | NP_066124.1:p.(Glu632_Ala640delinsValArgPro) |
| chr10      | 43609943        | AGCTGTGCCGCACGGTGATCGCAG   | TCCGGC           | RET  | NP_066124.1:p.(Glu632_Ala640delinsValArgPro) |
| chr10      | 43609943        | AGCTGTGCCGCACGGTGATCGCAG   | TCCGTC           | RET  | NP_066124.1:p.(Glu632_Ala640delinsValArgPro) |
| chr10      | 43609943        | AGCTGTGCCGCACGGTGATCGCAG   | TGAGAC           | RET  | NP_066124.1:p.(Glu632_Ala640delinsValArgPro) |
| chr10      | 43609943        | AGCTGTGCCGCACGGTGATCGCAG   | TGAGGC           | RET  | NP_066124.1:p.(Glu632_Ala640delinsValArgPro) |
| chr10      | 43609943        | AGCTGTGCCGCACGGTGATCGCAG   | TGCGAC           | RET  | NP_066124.1:p.(Glu632_Ala640delinsValArgPro) |
| chr10      | 43609943        | AGCTGTGCCGCACGGTGATCGCAG   | TGCGCC           | RET  | NP_066124.1:p.(Glu632_Ala640delinsValArgPro) |
| chr10      | 43609943        | AGCTGTGCCGCACGGTGATCGCAG   | TGCGGC           | RET  | NP_066124.1:p.(Glu632_Ala640delinsValArgPro) |

| Chromosome | Position (hg19) | Reference Allele         | Alternate Allele | Gene | Amino Acid Change                            |
|------------|-----------------|--------------------------|------------------|------|--|
| chr10      | 43609943        | AGCTGTGCCGCACGGTGATCGCAG | TGCGTC           | RET  | NP_066124.1:p.(Glu632_Ala640delinsValArgPro) |
| chr10      | 43609943        | AGCTGTGCCGCACGGTGATCGCAG | TTAGAC           | RET  | NP_066124.1:p.(Glu632_Ala640delinsValArgPro) |
| chr10      | 43609943        | AGCTGTGCCGCACGGTGATCGCAG | TTAGGC           | RET  | NP_066124.1:p.(Glu632_Ala640delinsValArgPro) |
| chr10      | 43609943        | AGCTGTGCCGCACGGTGATCGCAG | TTCGAC           | RET  | NP_066124.1:p.(Glu632_Ala640delinsValArgPro) |
| chr10      | 43609943        | AGCTGTGCCGCACGGTGATCGCAG | TTCGCC           | RET  | NP_066124.1:p.(Glu632_Ala640delinsValArgPro) |
| chr10      | 43609943        | AGCTGTGCCGCACGGTGATCGCAG | TTCGGC           | RET  | NP_066124.1:p.(Glu632_Ala640delinsValArgPro) |
| chr10      | 43609943        | AGCTGTGCCGCACGGTGATCGCAG | TTCGTC           | RET  | NP_066124.1:p.(Glu632_Ala640delinsValArgPro) |
| chr10      | 43609943        | AGCTGTGCCGCACGGTG        | CAGCA            | RET  | NP_066124.1:p.(Glu632_Val637delinsAlaAla)    |
| chr10      | 43609943        | AGCTGTGCCGCACGGTG        | CAGCC            | RET  | NP_066124.1:p.(Glu632_Val637delinsAlaAla)    |
| chr10      | 43609943        | AGCTGTGCCGCACGGTG        | CAGCT            | RET  | NP_066124.1:p.(Glu632_Val637delinsAlaAla)    |
| chr10      | 43609943        | AGCTGTGCCGCACGGTG        | CCGCA            | RET  | NP_066124.1:p.(Glu632_Val637delinsAlaAla)    |
| chr10      | 43609943        | AGCTGTGCCGCACGGTG        | CCGCC            | RET  | NP_066124.1:p.(Glu632_Val637delinsAlaAla)    |
| chr10      | 43609943        | AGCTGTGCCGCACGGTG        | CCGCT            | RET  | NP_066124.1:p.(Glu632_Val637delinsAlaAla)    |
| chr10      | 43609943        | AGCTGTGCCGCACGGTG        | CGGCA            | RET  | NP_066124.1:p.(Glu632_Val637delinsAlaAla)    |
| chr10      | 43609943        | AGCTGTGCCGCACGGTG        | CGGCC            | RET  | NP_066124.1:p.(Glu632_Val637delinsAlaAla)    |
| chr10      | 43609943        | AGCTGTGCCGCACGGTG        | CGGCT            | RET  | NP_066124.1:p.(Glu632_Val637delinsAlaAla)    |
| chr10      | 43609943        | AGCTGTGCCGCACGGTG        | CTGCA            | RET  | NP_066124.1:p.(Glu632_Val637delinsAlaAla)    |
| chr10      | 43609943        | AGCTGTGCCGCACGGTG        | CTGCC            | RET  | NP_066124.1:p.(Glu632_Val637delinsAlaAla)    |
| chr10      | 43609943        | AGCTGTGCCGCACGGTG        | CTGCT            | RET  | NP_066124.1:p.(Glu632_Val637delinsAlaAla)    |
| chr10      | 43609943        | AGCTG                    | TT               | RET  | NP_066124.1:p.(Glu632_Leu633delinsVal)       |
| chr10      | 43609944        | GCTGT                    | CGTAC            | RET  | NP_066124.1:p.(Glu632_Cys634delinsAspValArg) |
| chr10      | 43609944        | GCTGT                    | CGTCC            | RET  | NP_066124.1:p.(Glu632_Cys634delinsAspValArg) |
| chr10      | 43609944        | GCTGT                    | CGTGC            | RET  | NP_066124.1:p.(Glu632_Cys634delinsAspValArg) |
| chr10      | 43609944        | GCTGT                    | CGTTC            | RET  | NP_066124.1:p.(Glu632_Cys634delinsAspValArg) |
| chr10      | 43609944        | GCTGTGC                  | CGTAAGA          | RET  | NP_066124.1:p.(Glu632_Cys634delinsAspValArg) |

| Chromosome | Position (hg19) | Reference Allele | Alternate Allele | Gene | Amino Acid Change                            |
|------------|-----------------|------------------|------------------|------|--|
| chr10      | 43609944        | GCTGTGC          | CGTAAGG          | RET  | NP_066124.1:p.(Glu632_Cys634delinsAspValArg) |
| chr10      | 43609944        | GCTGTGC          | CGTACGA          | RET  | NP_066124.1:p.(Glu632_Cys634delinsAspValArg) |
| chr10      | 43609944        | GCTGTGC          | CGTACGG          | RET  | NP_066124.1:p.(Glu632_Cys634delinsAspValArg) |
| chr10      | 43609944        | GCTGTGC          | CGTACGT          | RET  | NP_066124.1:p.(Glu632_Cys634delinsAspValArg) |
| chr10      | 43609944        | GCTGTGC          | CGTCAGA          | RET  | NP_066124.1:p.(Glu632_Cys634delinsAspValArg) |
| chr10      | 43609944        | GCTGTGC          | CGTCAGG          | RET  | NP_066124.1:p.(Glu632_Cys634delinsAspValArg) |
| chr10      | 43609944        | GCTGTGC          | CGTCCGA          | RET  | NP_066124.1:p.(Glu632_Cys634delinsAspValArg) |
| chr10      | 43609944        | GCTGTGC          | CGTCCGG          | RET  | NP_066124.1:p.(Glu632_Cys634delinsAspValArg) |
| chr10      | 43609944        | GCTGTGC          | CGTCCGT          | RET  | NP_066124.1:p.(Glu632_Cys634delinsAspValArg) |
| chr10      | 43609944        | GCTGTGC          | CGTGAGA          | RET  | NP_066124.1:p.(Glu632_Cys634delinsAspValArg) |
| chr10      | 43609944        | GCTGTGC          | CGTGAGG          | RET  | NP_066124.1:p.(Glu632_Cys634delinsAspValArg) |
| chr10      | 43609944        | GCTGTGC          | CGTGCGA          | RET  | NP_066124.1:p.(Glu632_Cys634delinsAspValArg) |
| chr10      | 43609944        | GCTGTGC          | CGTGCGG          | RET  | NP_066124.1:p.(Glu632_Cys634delinsAspValArg) |
| chr10      | 43609944        | GCTGTGC          | CGTGCGT          | RET  | NP_066124.1:p.(Glu632_Cys634delinsAspValArg) |
| chr10      | 43609944        | GCTGTGC          | CGTTAGA          | RET  | NP_066124.1:p.(Glu632_Cys634delinsAspValArg) |
| chr10      | 43609944        | GCTGTGC          | CGTTAGG          | RET  | NP_066124.1:p.(Glu632_Cys634delinsAspValArg) |



| Chromosome | Position (hg19) | Reference Allele | Alternate Allele | Gene | Amino Acid Change                            |
|------------|-----------------|------------------|------------------|------|--|
| chr10      | 43609944        | GCTGTGC          | CGTTCGA          | RET  | NP_066124.1:p.(Glu632_Cys634delinsAspValArg) |
| chr10      | 43609944        | GCTGTGC          | CGTTCGG          | RET  | NP_066124.1:p.(Glu632_Cys634delinsAspValArg) |
| chr10      | 43609944        | GCTGTGC          | CGTTCGT          | RET  | NP_066124.1:p.(Glu632_Cys634delinsAspValArg) |
| chr10      | 43609944        | GCTGTGC          | TGTAAGA          | RET  | NP_066124.1:p.(Glu632_Cys634delinsAspValArg) |
| chr10      | 43609944        | GCTGTGC          | TGTAAGG          | RET  | NP_066124.1:p.(Glu632_Cys634delinsAspValArg) |
| chr10      | 43609944        | GCTGTGC          | TGTACGA          | RET  | NP_066124.1:p.(Glu632_Cys634delinsAspValArg) |
| chr10      | 43609944        | GCTGTGC          | TGTACGG          | RET  | NP_066124.1:p.(Glu632_Cys634delinsAspValArg) |
| chr10      | 43609944        | GCTGTGC          | TGTACGT          | RET  | NP_066124.1:p.(Glu632_Cys634delinsAspValArg) |
| chr10      | 43609944        | GCTGTGC          | TGTCAGA          | RET  | NP_066124.1:p.(Glu632_Cys634delinsAspValArg) |
| chr10      | 43609944        | GCTGTGC          | TGTCCGA          | RET  | NP_066124.1:p.(Glu632_Cys634delinsAspValArg) |
| chr10      | 43609944        | GCTGTGC          | TGTCCGG          | RET  | NP_066124.1:p.(Glu632_Cys634delinsAspValArg) |
| chr10      | 43609944        | GCTGTGC          | TGTCCGT          | RET  | NP_066124.1:p.(Glu632_Cys634delinsAspValArg) |
| chr10      | 43609944        | GCTGTGC          | TGTGAGA          | RET  | NP_066124.1:p.(Glu632_Cys634delinsAspValArg) |
| chr10      | 43609944        | GCTGTGC          | TGTGAGG          | RET  | NP_066124.1:p.(Glu632_Cys634delinsAspValArg) |
| chr10      | 43609944        | GCTGTGC          | TGTGCGA          | RET  | NP_066124.1:p.(Glu632_Cys634delinsAspValArg) |
| chr10      | 43609944        | GCTGTGC          | TGTGCGG          | RET  | NP_066124.1:p.(Glu632_Cys634delinsAspValArg) |

| Chromosome | Position (hg19) | Reference Allele | Alternate Allele | Gene | Amino Acid Change                            |
|------------|-----------------|------------------|------------------|------|--|
| chr10      | 43609944        | GCTGTGC          | TGTGCGT          | RET  | NP_066124.1:p.(Glu632_Cys634delinsAspValArg) |
| chr10      | 43609944        | GCTGTGC          | TGTTAGA          | RET  | NP_066124.1:p.(Glu632_Cys634delinsAspValArg) |
| chr10      | 43609944        | GCTGTGC          | TGTTAGG          | RET  | NP_066124.1:p.(Glu632_Cys634delinsAspValArg) |
| chr10      | 43609944        | GCTGTGC          | TGTTCGA          | RET  | NP_066124.1:p.(Glu632_Cys634delinsAspValArg) |
| chr10      | 43609944        | GCTGTGC          | TGTTCGG          | RET  | NP_066124.1:p.(Glu632_Cys634delinsAspValArg) |
| chr10      | 43609944        | GCTGTGC          | TGTTCGT          | RET  | NP_066124.1:p.(Glu632_Cys634delinsAspValArg) |
| chr10      | 43609944        | GCTGT            | TGTAC            | RET  | NP_066124.1:p.(Glu632_Cys634delinsAspValArg) |
| chr10      | 43609944        | GCTGT            | TGTCC            | RET  | NP_066124.1:p.(Glu632_Cys634delinsAspValArg) |
| chr10      | 43609944        | GCTGT            | TGTGC            | RET  | NP_066124.1:p.(Glu632_Cys634delinsAspValArg) |
| chr10      | 43609944        | GCTGT            | TGTTC            | RET  | NP_066124.1:p.(Glu632_Cys634delinsAspValArg) |
| chr10      | 43609945        | CTGTGC           | GTATGG           | RET  | NP_066124.1:p.(Leu633_Cys634delinsValTrp)    |
| chr10      | 43609945        | CTGTGC           | GTCTGG           | RET  | NP_066124.1:p.(Leu633_Cys634delinsValTrp)    |
| chr10      | 43609945        | CTGTGC           | GTGTGG           | RET  | NP_066124.1:p.(Leu633_Cys634delinsValTrp)    |
| chr10      | 43609945        | CTGTGC           | GTTTGG           | RET  | NP_066124.1:p.(Leu633_Cys634delinsValTrp)    |
| chr10      | 43609948        | TGC              | CCA              | RET  | NP_066124.1:p.(Cys634Pro)                    |
| chr10      | 43609948        | TGC              | CCG              | RET  | NP_066124.1:p.(Cys634Pro)                    |
| chr10      | 43609950        | CCGC             | GGGA             | RET  | NP_066124.1:p.(Cys634_Arg635delinsTrpGly)    |
| chr10      | 43609950        | CCGC             | GGGG             | RET  | NP_066124.1:p.(Cys634_Arg635delinsTrpGly)    |
| chr10      | 43609950        | CCGC             | GGGT             | RET  | NP_066124.1:p.(Cys634_Arg635delinsTrpGly)    |
| chr10      | 43609950        | CCGC             | TCCAAAAGA        | RET  | NP_066124.1:p.(Cys634_Arg635insProLys)       |
| chr10      | 43609950        | CCGC             | TCCAAAAGG        | RET  | NP_066124.1:p.(Cys634_Arg635insProLys)       |

| Chromosome | Position (hg19) | Reference Allele | Alternate Allele | Gene | Amino Acid Change                      |
|------------|-----------------|------------------|------------------|------|--|
| chr10      | 43609950        | CCGC             | TCCAAAACGA       | RET  | NP_066124.1:p.(Cys634_Arg635insProLys) |
| chr10      | 43609950        | CCGC             | TCCAAAACGG       | RET  | NP_066124.1:p.(Cys634_Arg635insProLys) |
| chr10      | 43609950        | CCGC             | TCCAAAACGT       | RET  | NP_066124.1:p.(Cys634_Arg635insProLys) |
| chr10      | 43609950        | CCGC             | TCCAAAGAGA       | RET  | NP_066124.1:p.(Cys634_Arg635insProLys) |
| chr10      | 43609950        | CCGC             | TCCAAAGAGG       | RET  | NP_066124.1:p.(Cys634_Arg635insProLys) |
| chr10      | 43609950        | CCGC             | TCCAAAGCGA       | RET  | NP_066124.1:p.(Cys634_Arg635insProLys) |
| chr10      | 43609950        | CCGC             | TCCAAAGCGG       | RET  | NP_066124.1:p.(Cys634_Arg635insProLys) |
| chr10      | 43609950        | CCGC             | TCCAAAGCGT       | RET  | NP_066124.1:p.(Cys634_Arg635insProLys) |
| chr10      | 43609950        | CCGC             | TCCCAAAGA        | RET  | NP_066124.1:p.(Cys634_Arg635insProLys) |
| chr10      | 43609950        | CCGC             | TCCCAAAGG        | RET  | NP_066124.1:p.(Cys634_Arg635insProLys) |
| chr10      | 43609950        | CCGC             | TCCCAAACGA       | RET  | NP_066124.1:p.(Cys634_Arg635insProLys) |
| chr10      | 43609950        | CCGC             | TCCCAAACGG       | RET  | NP_066124.1:p.(Cys634_Arg635insProLys) |
| chr10      | 43609950        | CCGC             | TCCCAAACGT       | RET  | NP_066124.1:p.(Cys634_Arg635insProLys) |
| chr10      | 43609950        | CCGC             | TCCCAAGAGA       | RET  | NP_066124.1:p.(Cys634_Arg635insProLys) |
| chr10      | 43609950        | CCGC             | TCCCAAGAGG       | RET  | NP_066124.1:p.(Cys634_Arg635insProLys) |
| chr10      | 43609950        | CCGC             | TCCCAAGCGA       | RET  | NP_066124.1:p.(Cys634_Arg635insProLys) |
| chr10      | 43609950        | CCGC             | TCCCAAGCGG       | RET  | NP_066124.1:p.(Cys634_Arg635insProLys) |
| chr10      | 43609950        | CCGC             | TCCCAAGCGT       | RET  | NP_066124.1:p.(Cys634_Arg635insProLys) |
| chr10      | 43609950        | CCGC             | TCCGAAAAGA       | RET  | NP_066124.1:p.(Cys634_Arg635insProLys) |
| chr10      | 43609950        | CCGC             | TCCGAAAAGG       | RET  | NP_066124.1:p.(Cys634_Arg635insProLys) |
| chr10      | 43609950        | CCGC             | TCCGAAACGA       | RET  | NP_066124.1:p.(Cys634_Arg635insProLys) |
| chr10      | 43609950        | CCGC             | TCCGAAACGG       | RET  | NP_066124.1:p.(Cys634_Arg635insProLys) |
| chr10      | 43609950        | CCGC             | TCCGAAACGT       | RET  | NP_066124.1:p.(Cys634_Arg635insProLys) |
| chr10      | 43609950        | CCGC             | TCCGAAGAGA       | RET  | NP_066124.1:p.(Cys634_Arg635insProLys) |
| chr10      | 43609950        | CCGC             | TCCGAAGAGG       | RET  | NP_066124.1:p.(Cys634_Arg635insProLys) |
| chr10      | 43609950        | CCGC             | TCCGAAGCGA       | RET  | NP_066124.1:p.(Cys634_Arg635insProLys) |
| chr10      | 43609950        | CCGC             | TCCGAAGCGG       | RET  | NP_066124.1:p.(Cys634_Arg635insProLys) |
| chr10      | 43609950        | CCGC             | TCCGAAGCGT       | RET  | NP_066124.1:p.(Cys634_Arg635insProLys) |

| Chromosome | Position (hg19) | Reference Allele | Alternate Allele | Gene | Amino Acid Change                      |
|------------|-----------------|------------------|------------------|------|--|
| chr10      | 43609950        | CCGC             | TCCTAAAAGA       | RET  | NP_066124.1:p.(Cys634_Arg635insProLys) |
| chr10      | 43609950        | CCGC             | TCCTAAAAGG       | RET  | NP_066124.1:p.(Cys634_Arg635insProLys) |
| chr10      | 43609950        | CCGC             | TCCTAAACGA       | RET  | NP_066124.1:p.(Cys634_Arg635insProLys) |
| chr10      | 43609950        | CCGC             | TCCTAAACGG       | RET  | NP_066124.1:p.(Cys634_Arg635insProLys) |
| chr10      | 43609950        | CCGC             | TCCTAAACGT       | RET  | NP_066124.1:p.(Cys634_Arg635insProLys) |
| chr10      | 43609950        | CCGC             | TCCTAAGAGA       | RET  | NP_066124.1:p.(Cys634_Arg635insProLys) |
| chr10      | 43609950        | CCGC             | TCCTAAGAGG       | RET  | NP_066124.1:p.(Cys634_Arg635insProLys) |
| chr10      | 43609950        | CCGC             | TCCTAAGCGA       | RET  | NP_066124.1:p.(Cys634_Arg635insProLys) |
| chr10      | 43609950        | CCGC             | TCCTAAGCGG       | RET  | NP_066124.1:p.(Cys634_Arg635insProLys) |
| chr10      | 43609950        | CCGC             | TCCTAAGCGT       | RET  | NP_066124.1:p.(Cys634_Arg635insProLys) |
| chr10      | 43609950        | C                | TCCAAAA          | RET  | NP_066124.1:p.(Cys634_Arg635insProLys) |
| chr10      | 43609950        | C                | TCCAAAG          | RET  | NP_066124.1:p.(Cys634_Arg635insProLys) |
| chr10      | 43609950        | C                | TCCAAA           | RET  | NP_066124.1:p.(Cys634_Arg635insProLys) |
| chr10      | 43609950        | C                | TCCCAAG          | RET  | NP_066124.1:p.(Cys634_Arg635insProLys) |
| chr10      | 43609950        | C                | TCCGAAA          | RET  | NP_066124.1:p.(Cys634_Arg635insProLys) |
| chr10      | 43609950        | C                | TCCGAAG          | RET  | NP_066124.1:p.(Cys634_Arg635insProLys) |
| chr10      | 43609950        | C                | TCCTAAA          | RET  | NP_066124.1:p.(Cys634_Arg635insProLys) |
| chr10      | 43609950        | C                | TCCTAAG          | RET  | NP_066124.1:p.(Cys634_Arg635insProLys) |
| chr10      | 43609952        | GC               | CAAAAAGA         | RET  | NP_066124.1:p.(Cys634_Arg635insProLys) |
| chr10      | 43609952        | GC               | CAAAACGA         | RET  | NP_066124.1:p.(Cys634_Arg635insProLys) |
| chr10      | 43609952        | GC               | CAAAACGG         | RET  | NP_066124.1:p.(Cys634_Arg635insProLys) |
| chr10      | 43609952        | GC               | CAAAACGT         | RET  | NP_066124.1:p.(Cys634_Arg635insProLys) |
| chr10      | 43609952        | GC               | CAAAGAGG         | RET  | NP_066124.1:p.(Cys634_Arg635insProLys) |
| chr10      | 43609952        | GC               | CAAAGCGA         | RET  | NP_066124.1:p.(Cys634_Arg635insProLys) |
| chr10      | 43609952        | GC               | CAAAGCGG         | RET  | NP_066124.1:p.(Cys634_Arg635insProLys) |
| chr10      | 43609952        | GC               | CAAAGCGT         | RET  | NP_066124.1:p.(Cys634_Arg635insProLys) |
| chr10      | 43609952        | GC               | CCAAAAGA         | RET  | NP_066124.1:p.(Cys634_Arg635insProLys) |
| chr10      | 43609952        | GC               | CCAAACGA         | RET  | NP_066124.1:p.(Cys634_Arg635insProLys) |

| Chromosome | Position (hg19) | Reference Allele | Alternate Allele | Gene | Amino Acid Change                         |
|------------|-----------------|------------------|------------------|------|---|
| chr10      | 43609952        | GC               | CCAAACGG         | RET  | NP_066124.1:p.(Cys634_Arg635insProLys)    |
| chr10      | 43609952        | GC               | CCAAACGT         | RET  | NP_066124.1:p.(Cys634_Arg635insProLys)    |
| chr10      | 43609952        | GC               | CCAAGAGA         | RET  | NP_066124.1:p.(Cys634_Arg635insProLys)    |
| chr10      | 43609952        | GC               | CCAAGAGG         | RET  | NP_066124.1:p.(Cys634_Arg635insProLys)    |
| chr10      | 43609952        | GC               | CCAAGCGA         | RET  | NP_066124.1:p.(Cys634_Arg635insProLys)    |
| chr10      | 43609952        | GC               | CCAAGCGG         | RET  | NP_066124.1:p.(Cys634_Arg635insProLys)    |
| chr10      | 43609952        | GC               | CCAAGCGT         | RET  | NP_066124.1:p.(Cys634_Arg635insProLys)    |
| chr10      | 43609952        | GC               | CGAAAAGA         | RET  | NP_066124.1:p.(Cys634_Arg635insProLys)    |
| chr10      | 43609952        | GC               | CGAAAAGG         | RET  | NP_066124.1:p.(Cys634_Arg635insProLys)    |
| chr10      | 43609952        | GC               | CGAAACGA         | RET  | NP_066124.1:p.(Cys634_Arg635insProLys)    |
| chr10      | 43609952        | GC               | CGAAACGG         | RET  | NP_066124.1:p.(Cys634_Arg635insProLys)    |
| chr10      | 43609952        | GC               | CGAAACGT         | RET  | NP_066124.1:p.(Cys634_Arg635insProLys)    |
| chr10      | 43609952        | GC               | CGAAGAGA         | RET  | NP_066124.1:p.(Cys634_Arg635insProLys)    |
| chr10      | 43609952        | GC               | CGAAGAGG         | RET  | NP_066124.1:p.(Cys634_Arg635insProLys)    |
| chr10      | 43609952        | GC               | CGAAGCGA         | RET  | NP_066124.1:p.(Cys634_Arg635insProLys)    |
| chr10      | 43609952        | GC               | CGAAGCGG         | RET  | NP_066124.1:p.(Cys634_Arg635insProLys)    |
| chr10      | 43609952        | GC               | CGAAGCGT         | RET  | NP_066124.1:p.(Cys634_Arg635insProLys)    |
| chr10      | 43609952        | GC               | CTAAAAGG         | RET  | NP_066124.1:p.(Cys634_Arg635insProLys)    |
| chr10      | 43609952        | GC               | CTAAACGA         | RET  | NP_066124.1:p.(Cys634_Arg635insProLys)    |
| chr10      | 43609952        | GC               | CTAAACGG         | RET  | NP_066124.1:p.(Cys634_Arg635insProLys)    |
| chr10      | 43609952        | GC               | CTAAACGT         | RET  | NP_066124.1:p.(Cys634_Arg635insProLys)    |
| chr10      | 43609952        | GC               | CTAAGAGA         | RET  | NP_066124.1:p.(Cys634_Arg635insProLys)    |
| chr10      | 43609952        | GC               | CTAAGCGA         | RET  | NP_066124.1:p.(Cys634_Arg635insProLys)    |
| chr10      | 43609952        | GC               | CTAAGCGG         | RET  | NP_066124.1:p.(Cys634_Arg635insProLys)    |
| chr10      | 43609952        | GC               | CTAAGCGT         | RET  | NP_066124.1:p.(Cys634_Arg635insProLys)    |
| chr10      | 43613904        | TTG              | ACT              | RET  | NP_066124.1:p.(Leu790Thr)                 |
| chr10      | 43615630        | TTCC             | ACCA             | RET  | NP_066124.1:p.(Asp903_Ser904delinsGluPro) |
| chr10      | 43615630        | TTCC             | ACCG             | RET  | NP_066124.1:p.(Asp903_Ser904delinsGluPro) |

Document # 200008661 v02  
 FOR IN VITRO DIAGNOSTIC USE  
 FOR EXPORT ONLY

| Chromosome | Position (hg19) | Reference Allele | Alternate Allele | Gene | Amino Acid Change                         |
|------------|-----------------|------------------|------------------|------|---|
| chr10      | 43615630        | TTCC             | ACCT             | RET  | NP_066124.1:p.(Asp903_Ser904delinsGluPro) |
| chr10      | 43615630        | TTCC             | GCCA             | RET  | NP_066124.1:p.(Asp903_Ser904delinsGluPro) |
| chr10      | 43615630        | TTCC             | GCCG             | RET  | NP_066124.1:p.(Asp903_Ser904delinsGluPro) |
| chr10      | 43615630        | TTCC             | GCCT             | RET  | NP_066124.1:p.(Asp903_Ser904delinsGluPro) |

## Revision History

| Document                    | Date             | Description of Change   |
|-----------------------------|------------------|---|
| Document #<br>200008661 v02 | April 2022       | Added companion diagnostic content.<br>Added NTRK clinical study content. |
| Document #<br>200008661 v01 | February<br>2022 | Added DNA and RNA Expanded Metrics sections.                              |
| Document #<br>200008661 v00 | November<br>2021 | Initial release.  |

## Technical Assistance

For technical assistance, contact Illumina Technical Support.

**Website:** [www.illumina.com](http://www.illumina.com)  
**Email:** [techsupport@illumina.com](mailto:techsupport@illumina.com)

Illumina Customer Support Telephone Numbers

| Region           | Toll Free       | Regional       |
|------------------|-----------------|----------------|
| North America    | +1.800.809.4566 |                |
| Australia        | +1.800.775.688  |                |
| Austria          | +43 800006249   | +43 19286540   |
| Belgium          | +32 80077160    | +32 34002973   |
| China            | 400.066.5835    |                |
| Denmark          | +45 80820183    | +45 89871156   |
| Finland          | +358 800918363  | +358 974790110 |
| France           | +33 805102193   | +33 170770446  |
| Germany          | +49 8001014940  | +49 8938035677 |
| Hong Kong, China | 800960230       |                |
| Ireland          | +353 1800936608 | +353 016950506 |
| Italy            | +39 800985513   | +39 236003759  |
| Japan            | 0800.111.5011   |                |
| Netherlands      | +31 8000222493  | +31 207132960  |
| New Zealand      | 0800.451.650    |                |
| Norway           | +47 800 16836   | +47 21939693   |
| Singapore        | +1.800.579.2745 |                |
| South Korea      | +82 80 234 5300 |                |
| Spain            | +34 911899417   | +34 800300143  |
| Sweden           | +46 850619671   | +46 200883979  |
| Switzerland      | +41 565800000   | +41 800200442  |
| Taiwan, China    | 00806651752     |                |
| United Kingdom   | +44 8000126019  | +44 2073057197 |
| Other countries  | +44.1799.534000 |                |

Safety data sheets (SDSs)—Available on the Illumina website at [support.illumina.com/sds.html](http://support.illumina.com/sds.html).

Product documentation—Available for download from [support.illumina.com](http://support.illumina.com).





Illumina  
5200 Illumina Way  
San Diego, California 92122 U.S.A.  
+1.800.809.ILMN (4566)  
+1.858.202.4566 (outside North America)  
techsupport@illumina.com  
www.illumina.com



Illumina Netherlands B.V.  
Steenoven 19  
5626 DK Eindhoven  
The Netherlands

**FOR IN VITRO DIAGNOSTIC USE  
FOR EXPORT ONLY**

© 2022 Illumina, Inc. All rights reserved.

**illumina®**